



FOR LEASE | HIGH EXPOSURE COMMERCIAL OPPORTUNITIES

2891 E HASTINGS ST

VANCOUVER, BC

BRANDON SIBAL

Vice President
Personal Real Estate Corporation

604.628.2582

brandon@sitings.ca

KAYLA MORROW

Senior Associate

604.416.5584

kayla@sitings.ca

SITINGS REALTY LTD.

SITINGS.CA / 604.684.6767

1595 – 650 West Georgia Street, Vancouver, BC V6B 4N8

SUMMARY

2891 East Hastings Street is prominently situated within the well-established Hastings-Sunrise commercial corridor in East Vancouver. Positioned at the high-exposure intersection of Renfrew Street and East Hastings Street, the property benefits from exceptional visibility and frontage, with traffic volumes exceeding 57,000 vehicles per day.

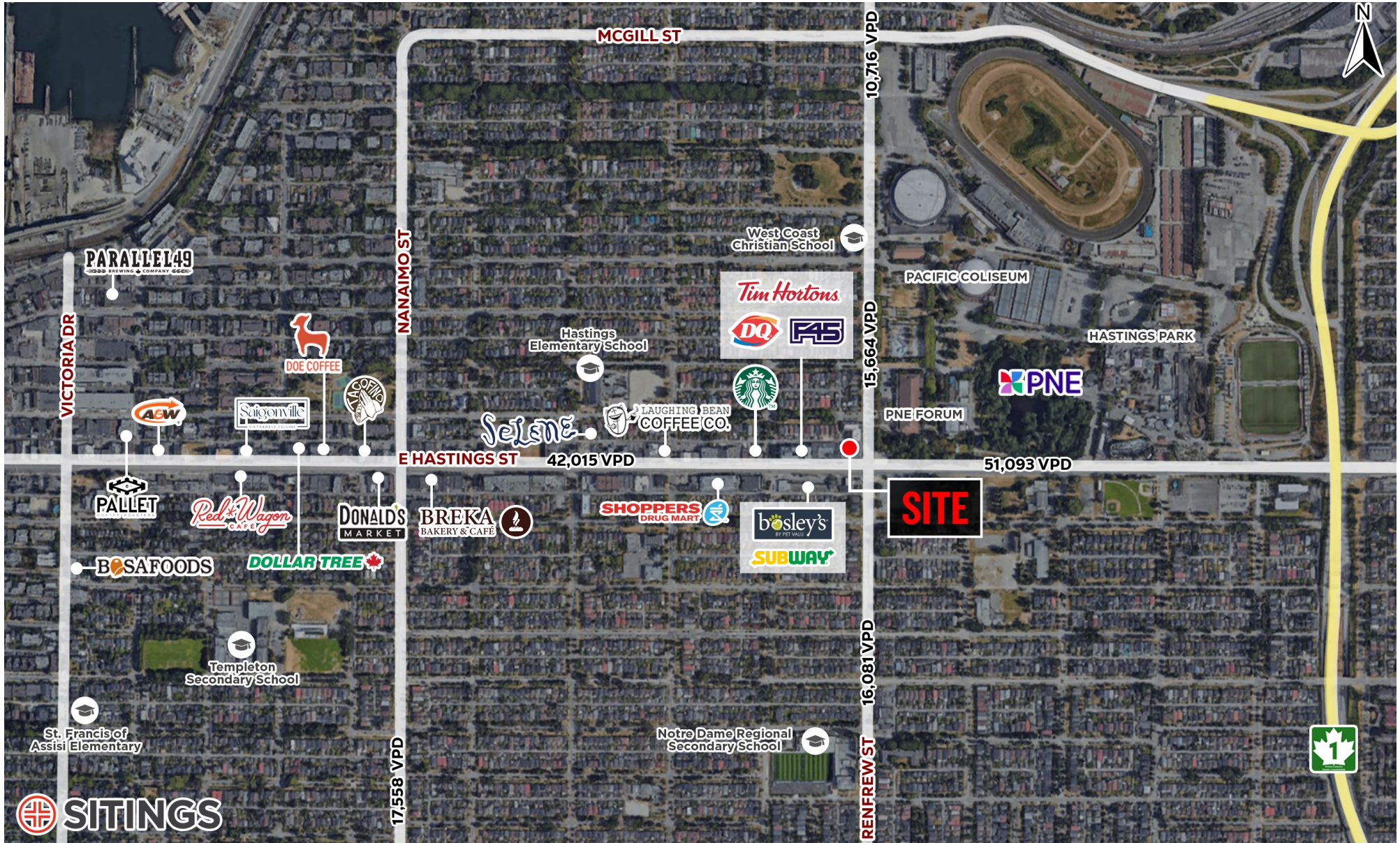
The surrounding area is anchored by a diverse and established retail mix and is in close proximity to key amenities including the Pacific Coliseum, PNE Grounds, and Hastings Park. Hastings Park is currently undergoing significant redevelopment, including the addition of a 10,000-seat amphitheatre, which is expected to further enhance pedestrian traffic, regional draw, and overall commercial activity in the immediate area.

Highlights include:

- ⊕ High exposure to major thoroughfares
- ⊕ Adjacent to Hastings Park which draws over 2.5 million visitors annually across all venues and programs
- ⊕ 115,266 daytime population with 3km radius
- ⊕ Fully fixtured commercial opportunities



AERIAL



This document/email has been prepared by Sitings Realty Ltd. for advertising and general information only. Although information contained herein is from sources we believe reliable, Sitings Realty Ltd. makes no guarantees, representations or warranties of any kind, expressed or implied, regarding the information including, but not limited to, warranties of content, accuracy and reliability. This document/email is subject to errors and omissions and any interested party should undertake their own inquiries as to the accuracy of the information. Sitings Realty Ltd. excludes unequivocally all inferred or implied terms, conditions and warranties arising out of this document and excludes all liability for loss and damages arising there from. All areas, measurements and dimension herein are approximate, interested parties/tenant are to verify measurements if important to them. This document/email is not an inducement representation.

DETAILS

✦ Address: 2891 E Hastings St, Vancouver BC

✦ Possession: Immediately

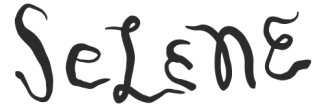
✦ Size: Unit 110: 689 SF
Unit 150: 4,734 SF

✦ Base Rent: Contact Listing Agent

✦ Parking: 7 commercial parking stalls

✦ Additional Rent: Unit 110: \$21.24 PSF (2026 estimates)
Unit 150: \$18.89 PSF (2026 estimates)

AREA TENANTS



DEMOGRAPHICS

DRIVE TIME	1 KM	3 KM	5 KM
2025 Population	14,286	101,873	358,761
2030 Populations Projections	14,448	103,643	371,295
2025 Average HH Income	\$137,796	\$130,188	\$131,117
2025 Daytime Population	13,980	115,266	405,600

CONTACT

BRANDON SIBAL

Vice President
Personal Real Estate Corporation

604.628.2582
brandon@sitings.ca

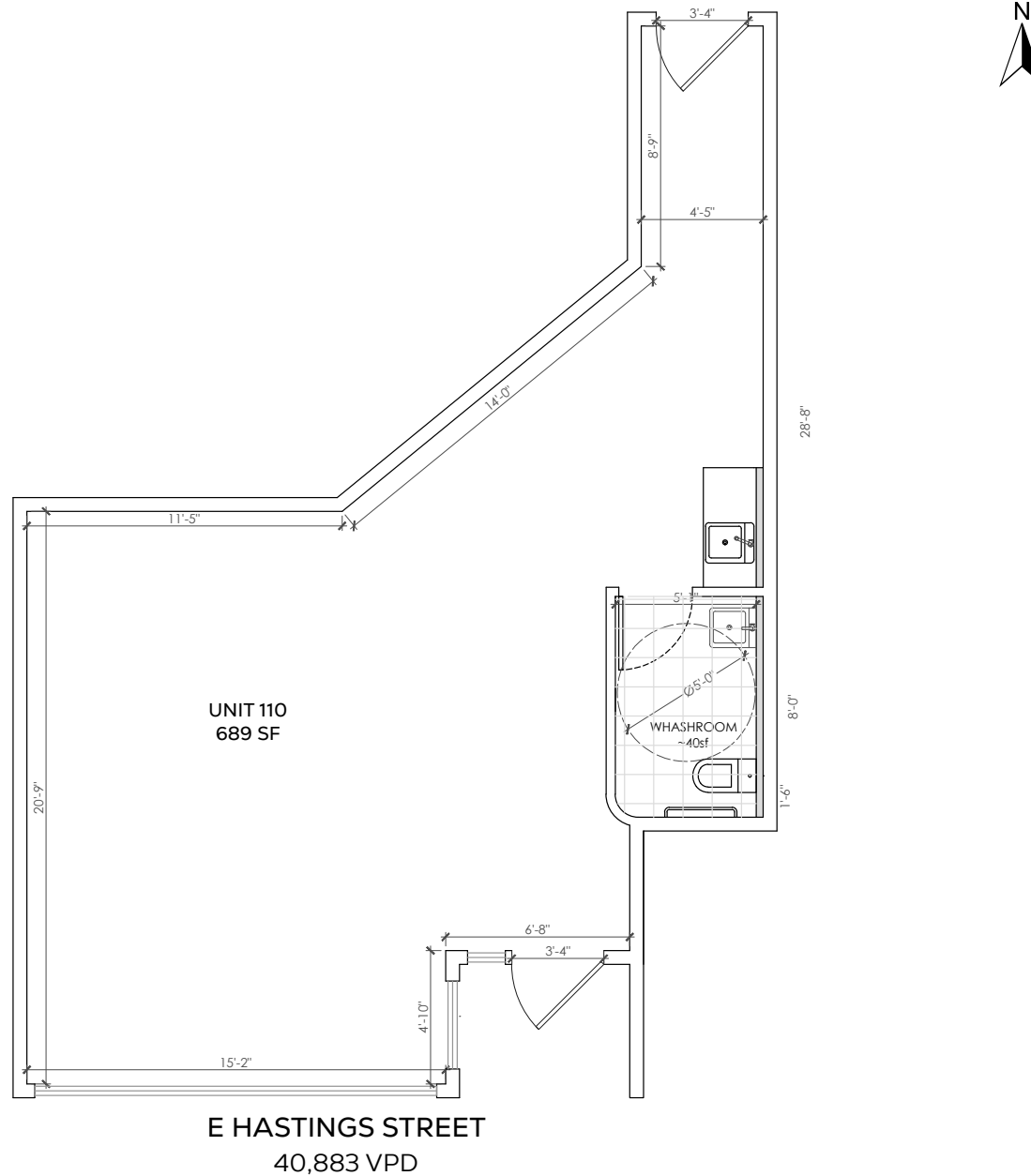
KAYLA MORROW

Senior Associate

604.416.5584
kayla@sitings.ca

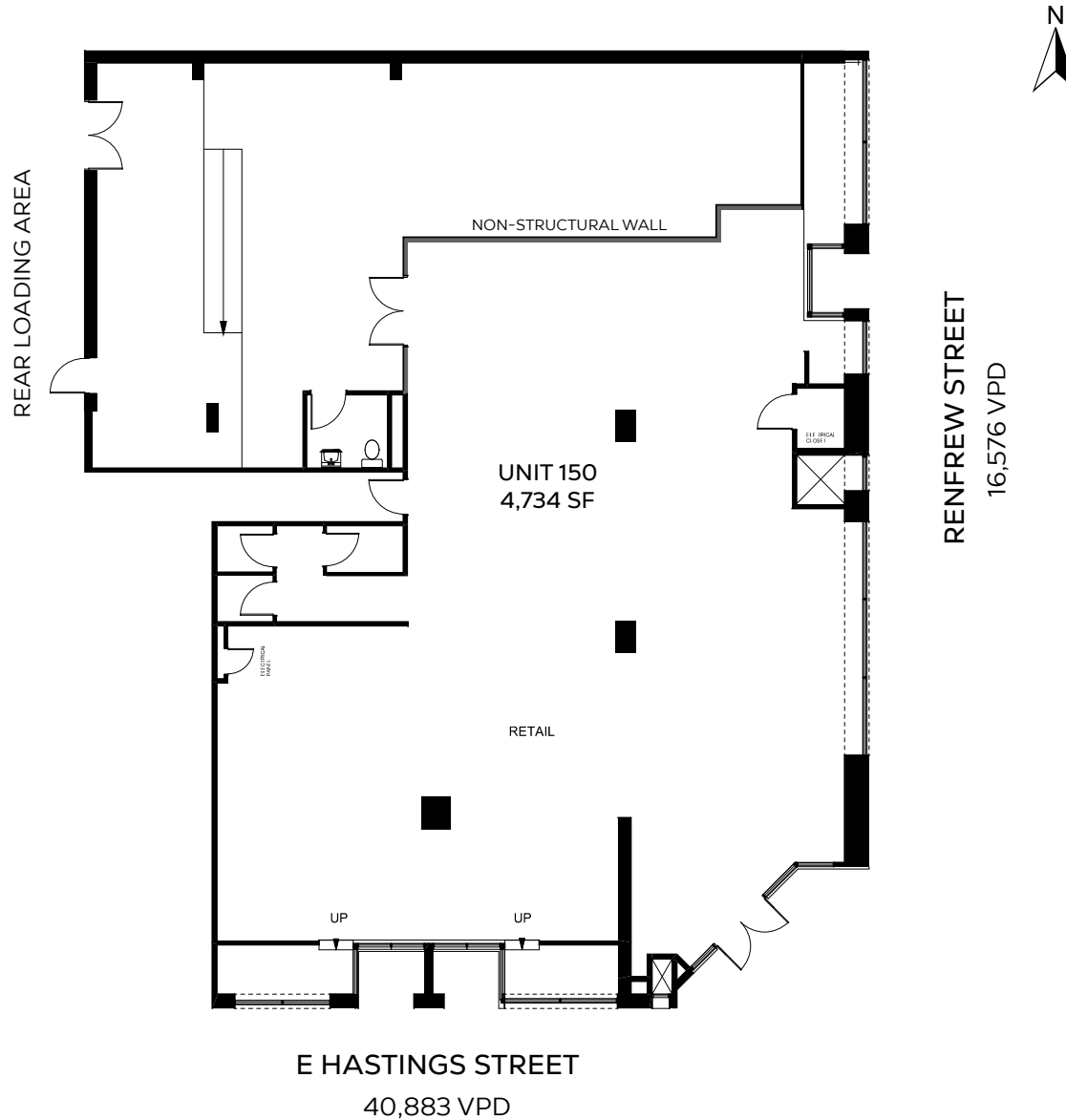
FLOOR PLAN - UNIT 110: 689 SF

 [VIRTUAL TOUR](#)



FLOOR PLAN - UNIT 150: 4,734 SF

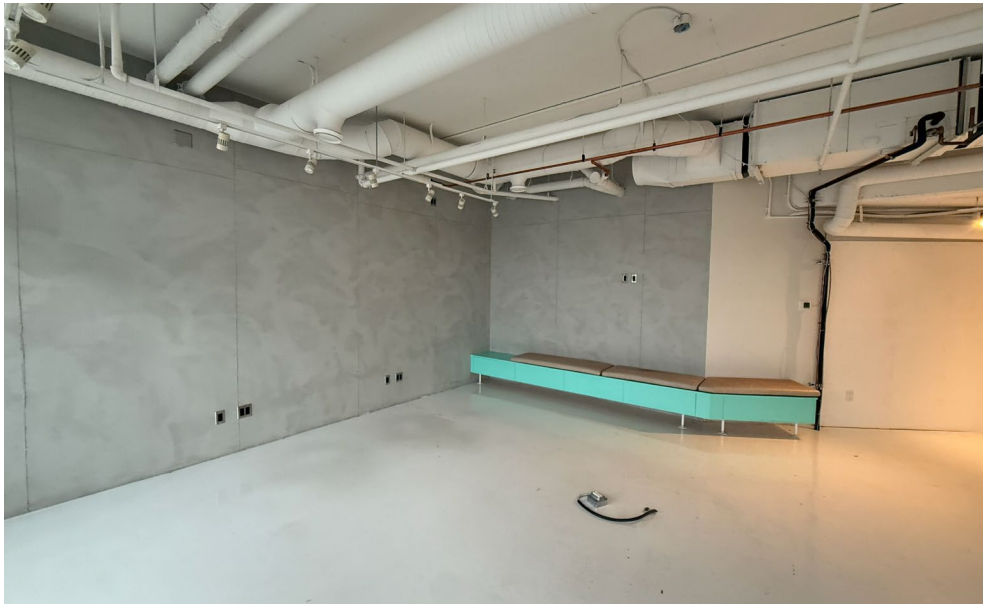
 [VIRTUAL TOUR](#)



PHOTOS - EXTERIOR



PHOTOS - UNIT 110: 689 SF



PHOTOS - UNIT 150: 4,734 SF

