



## WHISTLER MARKETPLACE PAVILION

#214 - 4368 MAIN STREET

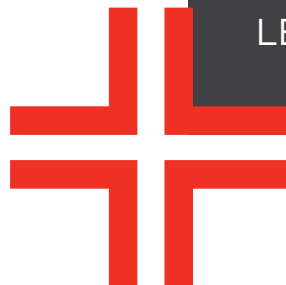
LEASING BROCHURE

LIAM MARCH

Personal Real Estate Corporation

604.628.2583

liam@sittings.ca



SITINGS REALTY LTD.

SITINGS.CA / 604.684.6767

1595 - 650 West Georgia Street, Vancouver, BC V6B 4N8

## PROJECT SUMMARY

Exceptional opportunity to lease a well-improved hybrid office/retail unit in the Whistler Marketplace Pavilion, just steps from Whistler Village and Whistler Marketplace. This second-floor unit features three built-out offices, a kitchenette, and storage, offering a turnkey solution in a highly accessible, amenity-rich location serving both locals and visitors.

Whistler is internationally recognized as a premier year-round resort destination, drawing consistent activity from residents, seasonal workers, and tourists alike. Position your business in a highly desirable marketplace setting and benefit from the energy, visibility, and prestige of one of the world's most sought-after mountain communities.

## DETAILS

✚ Size: 700 SF

✚ Available: Immediately

✚ Base Rent: \$55.00 PSF

Additional Rent: \$29.00 PSF

✚ Parking: Ample street parking available

✚ Washroom: Common washroom available

✚ Signage: Exterior of unit

## AREA TENANTS



## CONTACT

LIAM MARCH

Personal Real Estate Corporation

604.628.2583

liam@sitings.ca

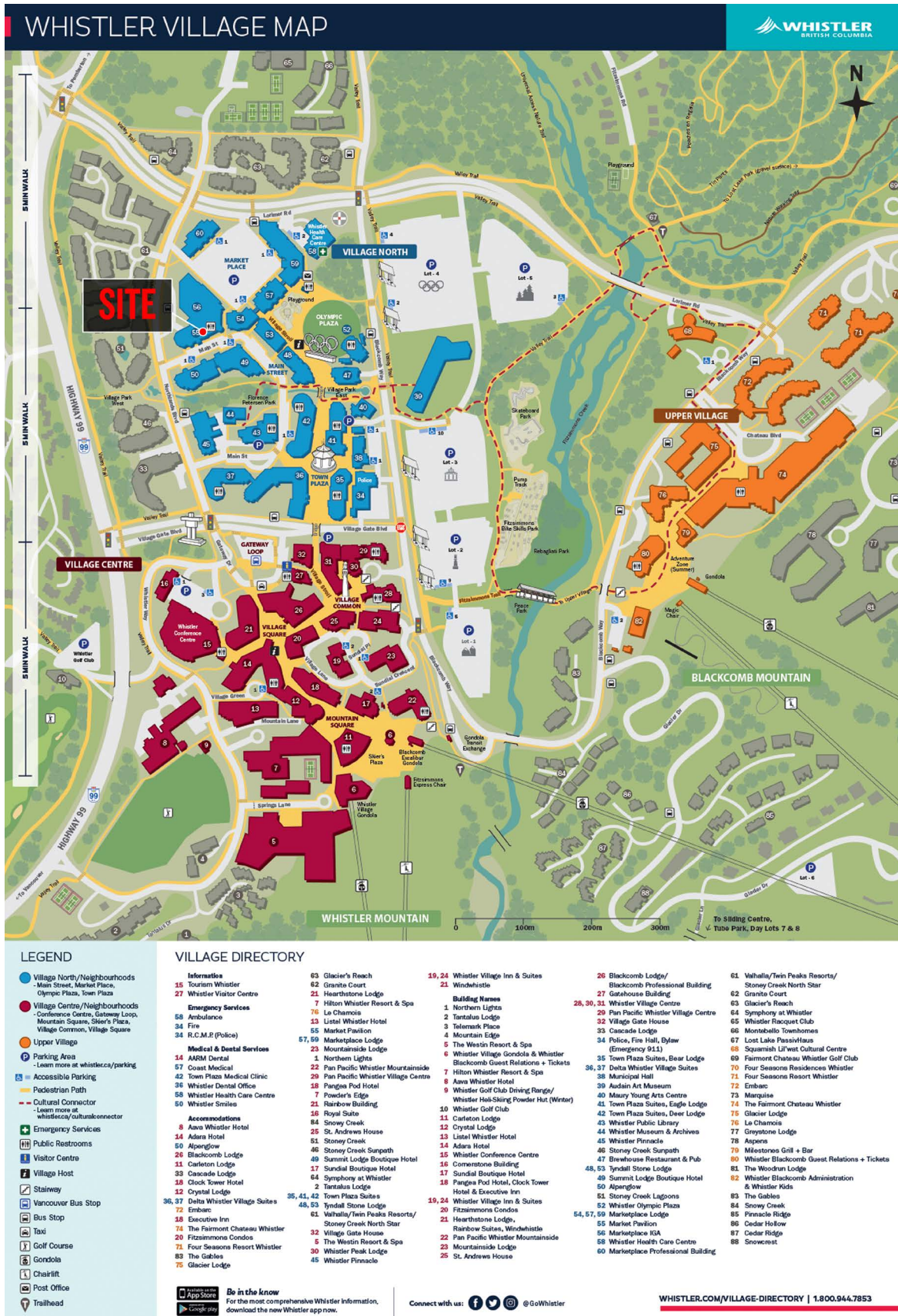


# WHISTLER AERIAL





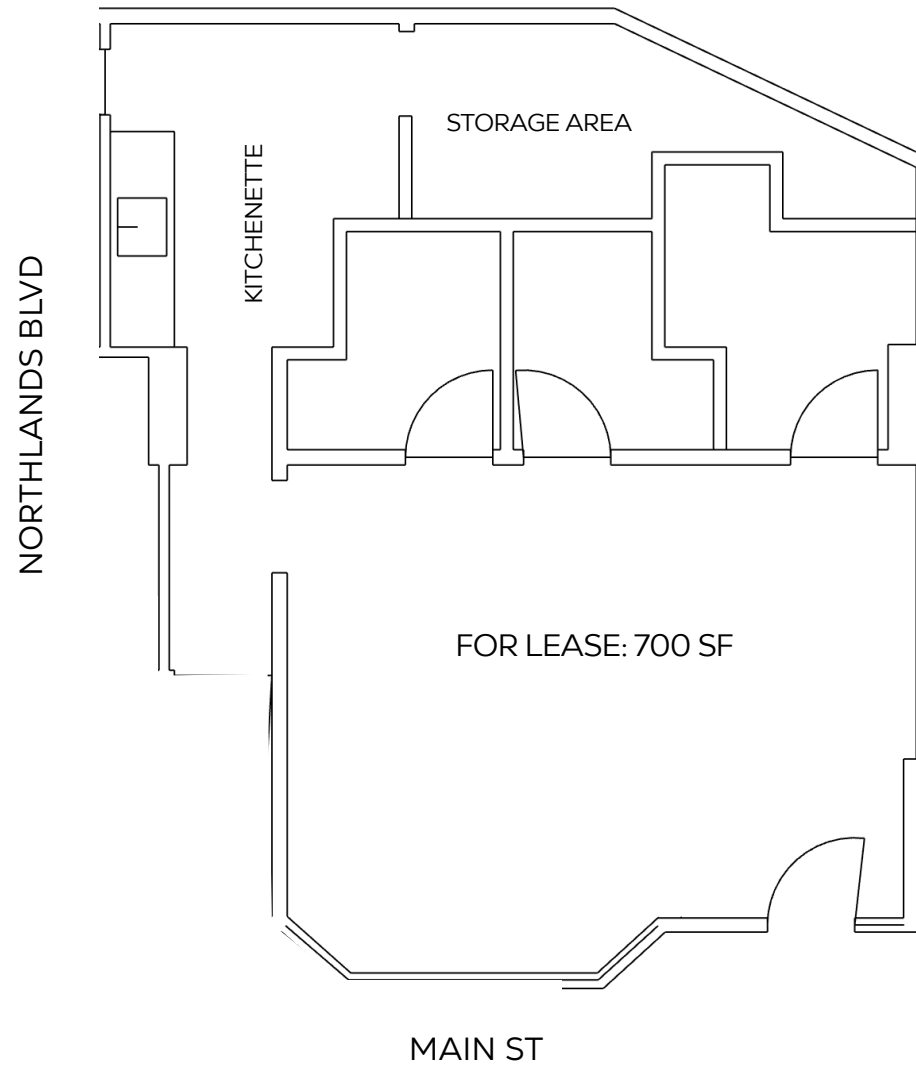
# WHISTLER VILLAGE MAP



# SITE PLAN



# FLOOR PLAN



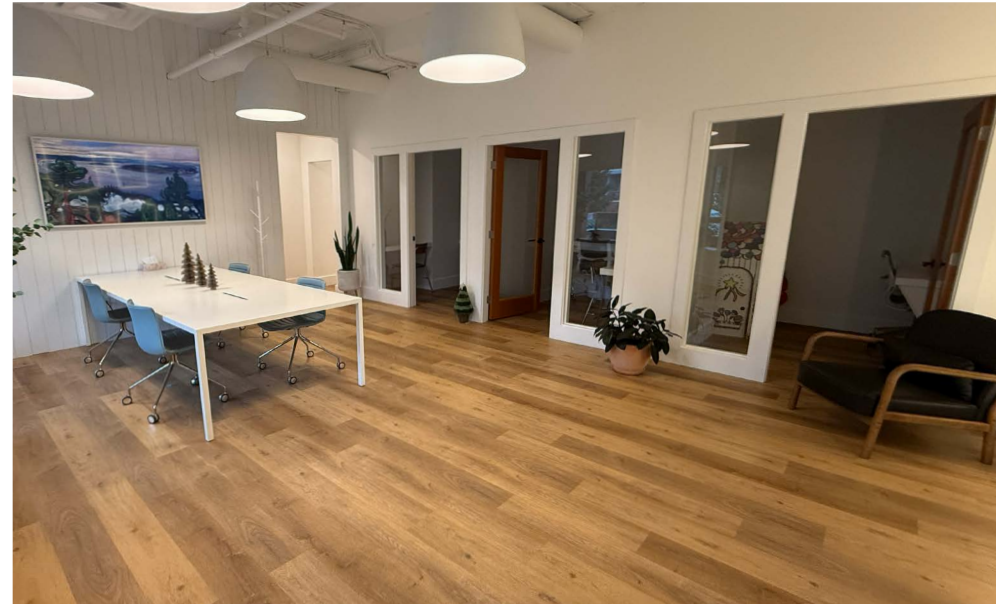
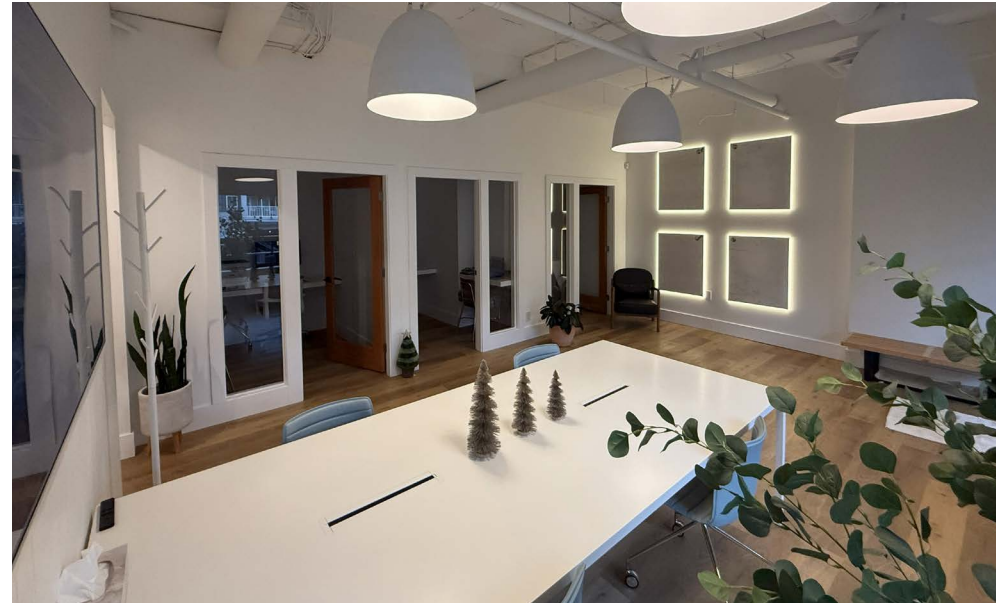


## EXTERIOR PHOTOS



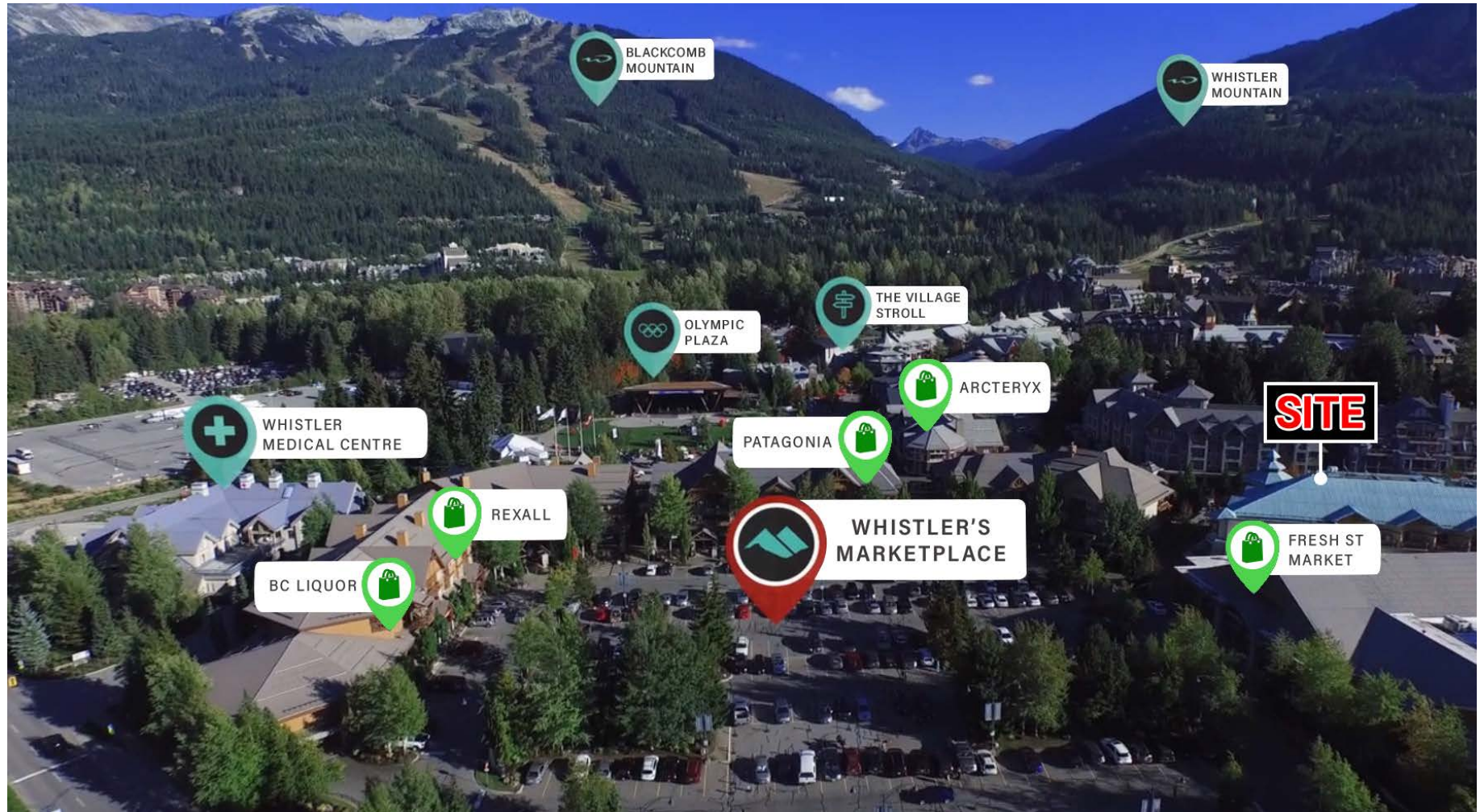


# INTERIOR PHOTOS





# TRADE AREA



## WHISTLER LOCAL POPULATION

14,367  
+ Over 400 Businesses

## ANNUAL VISITATION

3.3 Million  
(Approx. 45% Winter / 55% Summer)

## RESORT CAPACITY

35,000 Overnight Visitors  
Daily Population 35,000 - 70,000  
During Peak Times



# WHISTLER EVENTS & CULTURE

