



# GRANVILLE STATION

Granville SkyTrain Station (Expo Line), Downtown Vancouver, BC

LEASING BROCHURE

NICK FISHER  
Personal Real Estate Corporation  
604.628.2581  
nick@sitings.ca



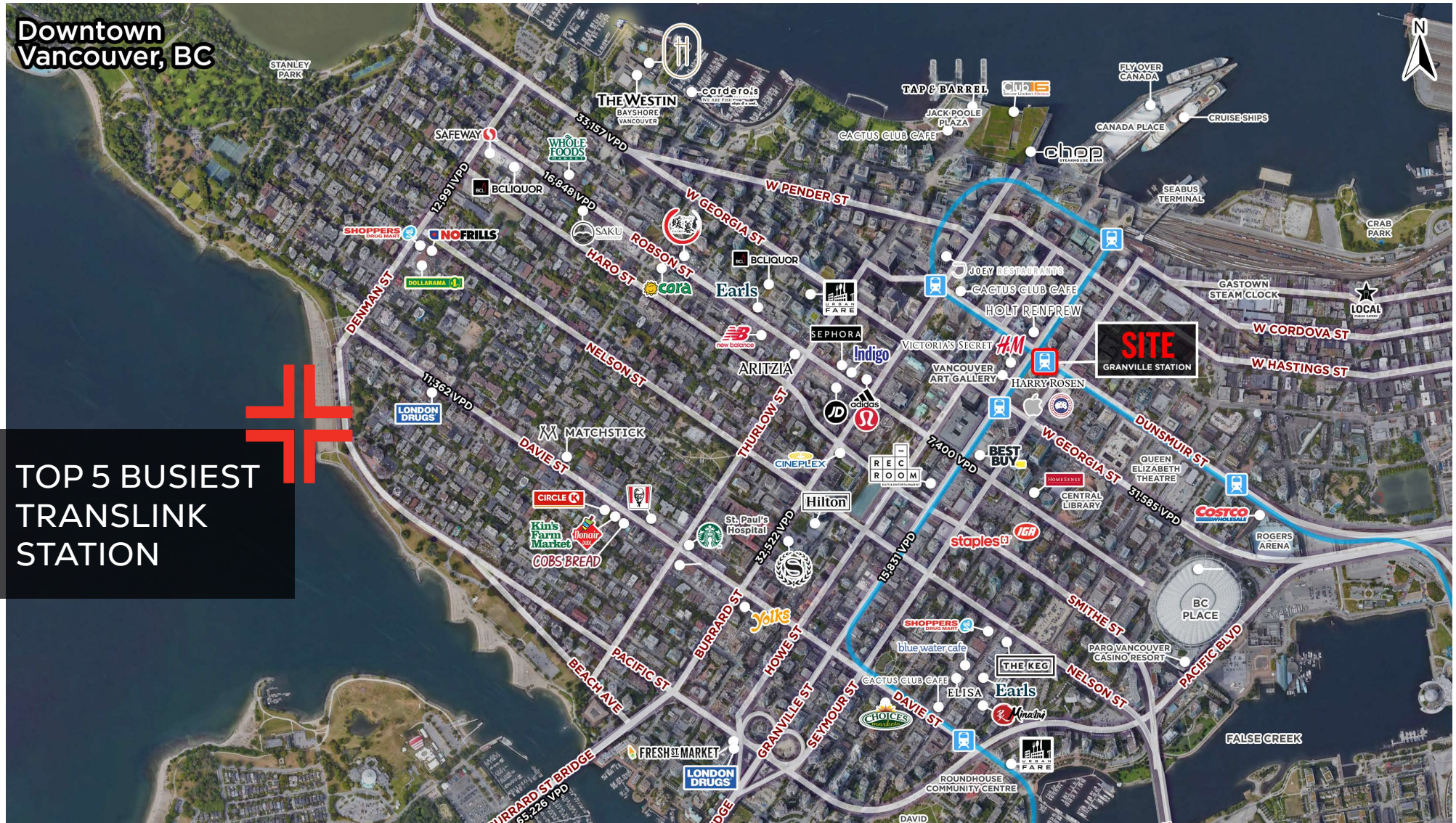
SITINGS REALTY LTD.  
SITINGS.CA / 604.684.6767  
1595 – 650 West Georgia Street, Vancouver, BC V6B 4N8



# PROJECT SUMMARY

Now leasing 247 SF retail unit at Granville SkyTrain Station in downtown Vancouver. Conveniently located off Granville Street between West Georgia and Dunsmuir Street, this station is a key stop on the Expo Line, servicing a bustling retail and office hub in Downtown Vancouver.

This station has multiple access points, including via Pacific Centre Shopping Centre. The subject space is behind the faregates next to the Expo Line platform, conveniently serving SkyTrain travellers waiting for their train.





## DETAILS

✦ Available: Granville Platform CRU: 247 SF

✦ Timing: Available Immediately

✦ Base Rent: Contact Listing Agent

✦ Power Capacity Limited (90 amps service)

✦ Additional Rent: \$5.00 PSF (2025 est.)

✦ No Property Tax is assessed

## AREA FEATURES



SkyTrain every 3-5 mins & servicing over 20 bus routes



Ridership: 24,000 AVG people/day in and out



Adjacent to busy retail node including Pacific Centre Mall, Holt Renfrew, and Granville St



Servicing a dense downtown daytime employment node

## CONTACT

NICK FISHER

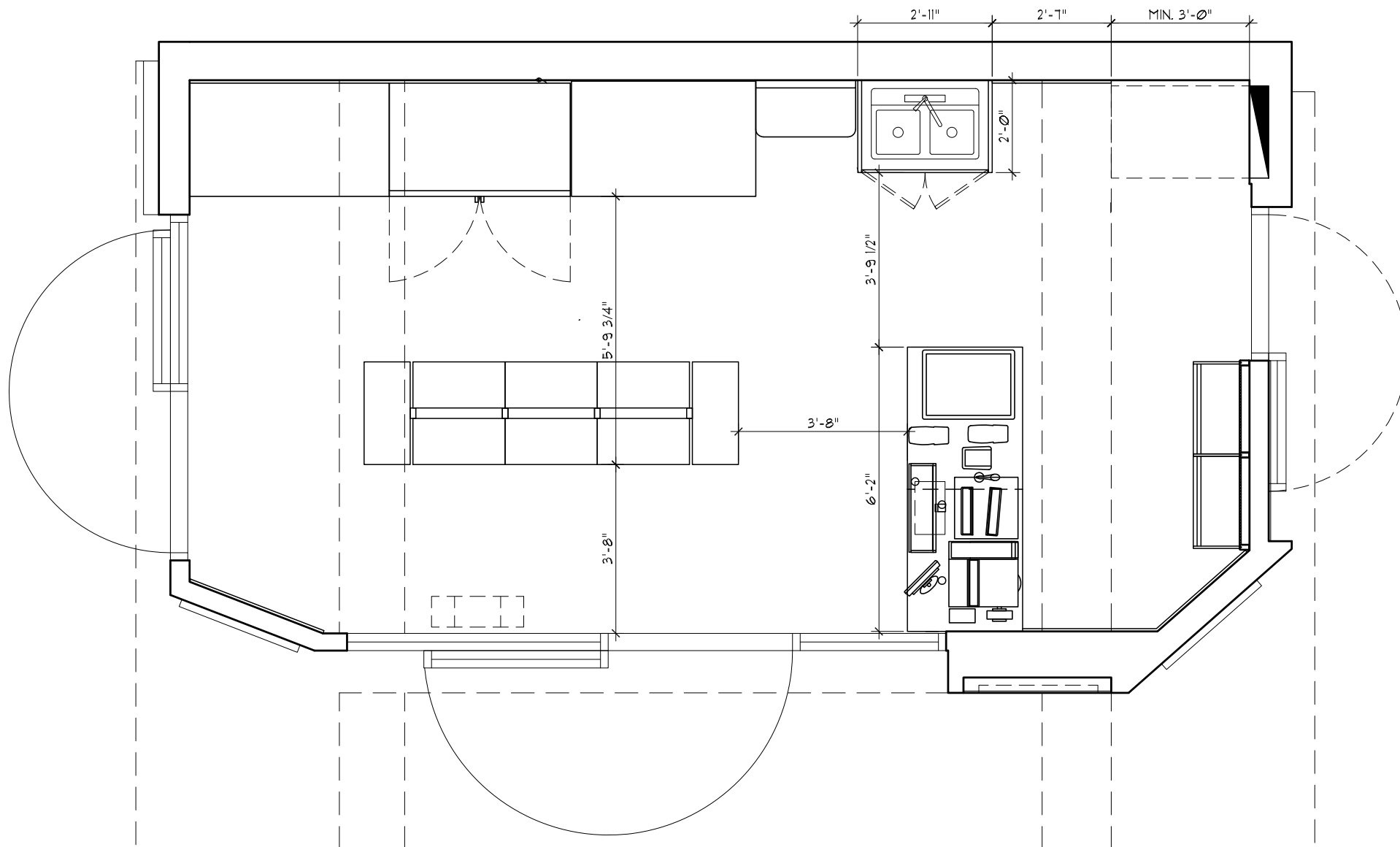
Personal Real Estate Corporation  
Sitings Realty Ltd

604.628.2581  
nick@sitings.ca

# T Key Regional Transit Connections



# FLOOR PLAN





# PHOTOS

