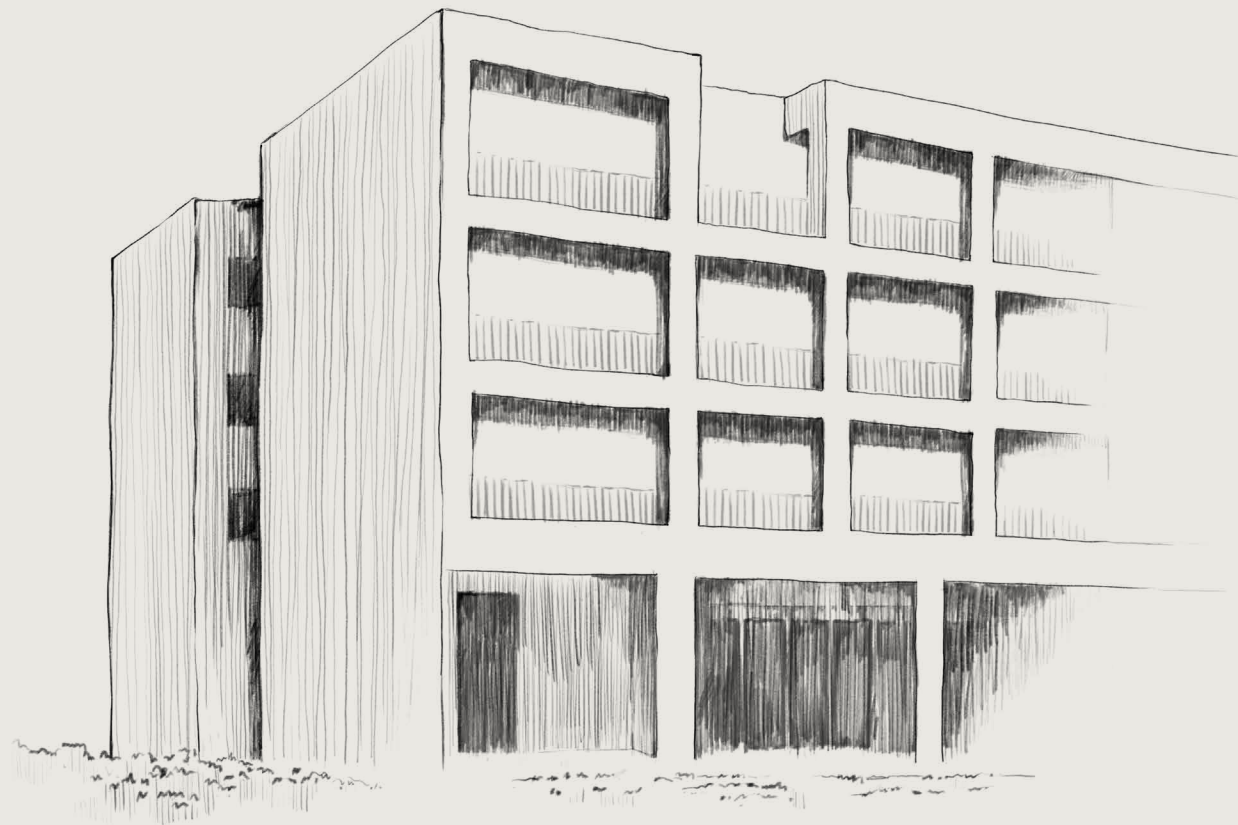


naímo

EAST VAN



A HUDSON PROJECT



PREMIUM STRATA RETAIL
FOR SALE

2250 NANAIMO STREET
VANCOUVER, BC



SHELDON SCOTT
Personal Real Estate Corporation
604.416.5582
sheldon@sittings.ca

KAYLA MORROW
Senior Associate
604.416.5584
kayla@sittings.ca



Modern craft on an intimate scale.

Introducing Naimo, an intimate mixed-use community under construction in the vibrant neighborhood of Grandview-Woodland, East Van. Offering 38 residential strata homes and 5 commercial-retail spaces at street level.



Project Highlights.

-  Walking distance from the Commercial-Broadway Skytrain Station, the third busiest transit hub in Western Canada.
-  Neighbourhood is projected to grow by 10,000 residents over the next 30 years, as outlined in the Grandview-Woodland Community Plan.
-  Strong retail exposure with approximately 11,130 vehicles passing by daily.
-  Features well-designed, small-format commercial units that cater to a variety of business needs.

Project Details.



Municipal Address

2250 Nanaimo Street, Vancouver, BC



Proposed Vehicle Access/Egress

Laneway access on E 6th and E 7th Avenue



Power

Up to 400 amp



Retail

811 up to 4,793 sf total



Zoning

C-2



Ceiling Height

Up to 17 ft



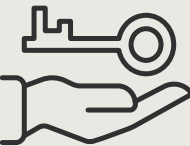
Residential

38 strata residential homes



Commercial Parking

7 commercial parking stalls



Estimated Occupancy

Q2 2027

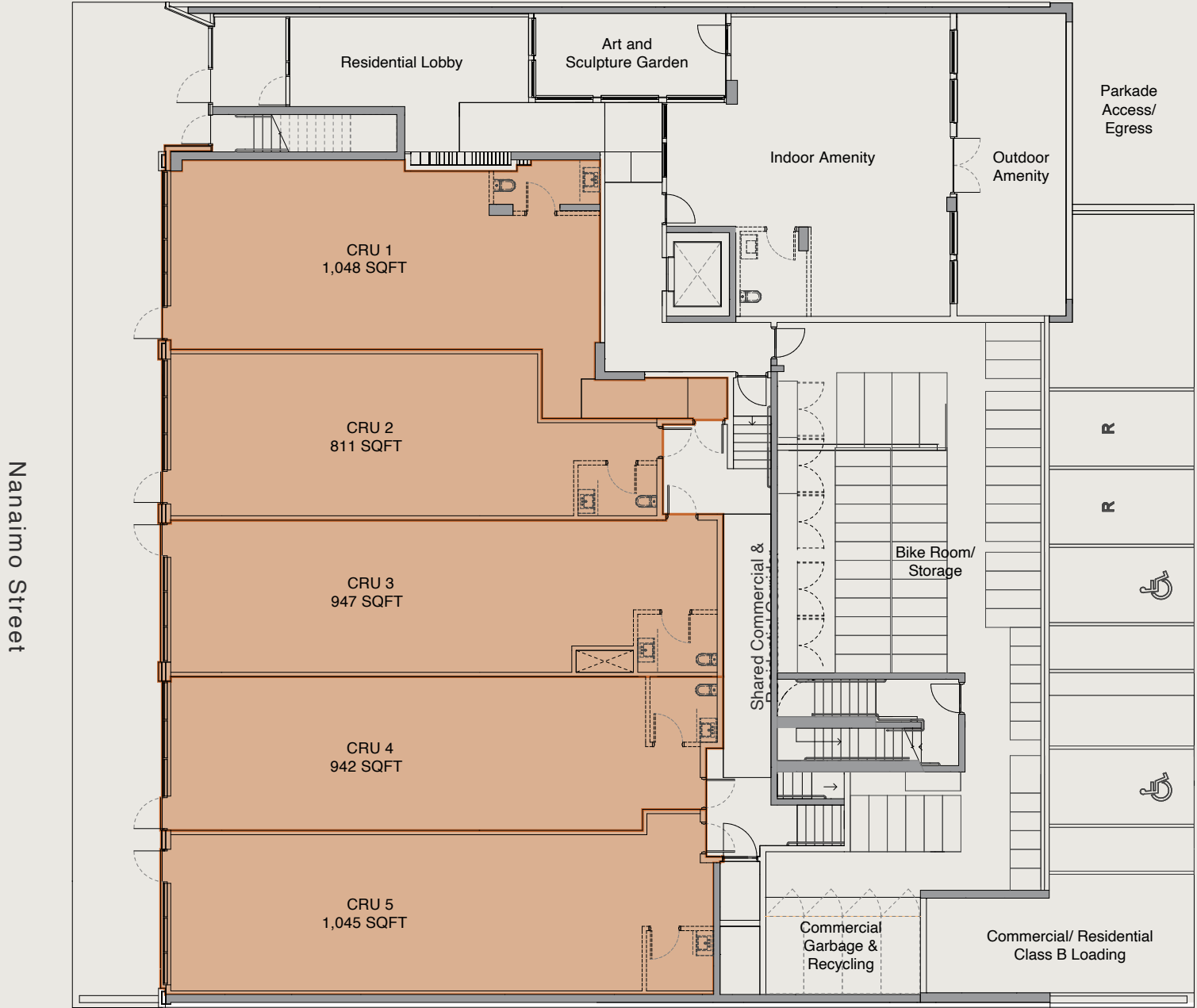


Commercial Loading

1 Class B Loading



Retail Strata Plan.



UNIT	SIZE (SQFT)	WIDTH (FT)	DEPTH (FT)	CEILING HEIGHT (FT)	POWER (AMPS)
CRU 1	1,048	21'7"	44'3"	16'4"	
CRU 2	811	17'5"	59'7"	16'5"	
CRU 3	947	16'4"	56'4"	17'4"	
CRU 4	942	16'6"	56'4"	18'4"	
CRU 5	1,045	18'3"	56'4"	18' 5"	

Please contact Listing Agents for pricing and availability.



The Neighbourhood.

Naimo is ideally positioned in the vibrant and evolving Grandview-Woodland neighbourhood of East Vancouver. Situated along Nanaimo Street, the project is a 2-minute walk from East Broadway Street, one of Vancouver's main East-West corridors, offering seamless connections to Downtown Vancouver and Burnaby. 2250 Nanaimo Street is a strategic and desirable place for commercial businesses in one of the city's most well-connected neighbourhoods.



About Hudson.

Hudson is a Vancouver-based real estate developer. They create uniquely aspirational spaces that fit within the urban fabric of the communities they work in. Working with a growing group of talented artists, architects, designers and craftspeople, they aspire to design and build forward-thinking sustainable communities.

naímo

EAST VAN

SHELDON SCOTT
Personal Real Estate Corporation
604.416.5582
sheldon@sitings.ca

KAYLA MORROW
Senior Associate
604.416.5584
kayla@sitings.ca

SITINGS REALTY LTD
1595-650 West Georgia Street
Vancouver, BC

COMMERCIAL SALES BY



DEVELOPED BY

