



# OXFORD PARK

15272 127 Street NW  
Edmonton, AB

GROCERY ANCHORED  
RETAIL FOR LEASE





# PROJECT SUMMARY

Oxford Crossing is a neighborhood shopping center anchored by Save-On-Foods and Shoppers Drug Mart, conveniently located in NW Edmonton, catering to the daily needs of surrounding residents. The 1,304 sq. ft. retail unit available offers dual sided signage and convenient and ample parking, making it well positioned for retail, personal service, medical or food uses. The surrounding neighborhood, characterized by single-family homes, is well-served by amenities such as parks, schools, and recreational facilities, making it an attractive place for families. Additionally, Oxford Crossing benefits from excellent transportation links and proximity to major roads, ensuring convenient customer access.





# DETAILS

✚ Unit 15272: 1,304 SF	✚ Available: Immediately
✚ Base Rent: Contact Listing Agents	✚ Dual-sided storefront signage + pylon opportunity
✚ Additional Rent: \$17.41 PSF + Management fee (5% of operational costs and basic rent)	✚ Grocery/Pharmacy anchored centre with ample parking

▶ AERIAL VIDEO

# CO-TENANTS



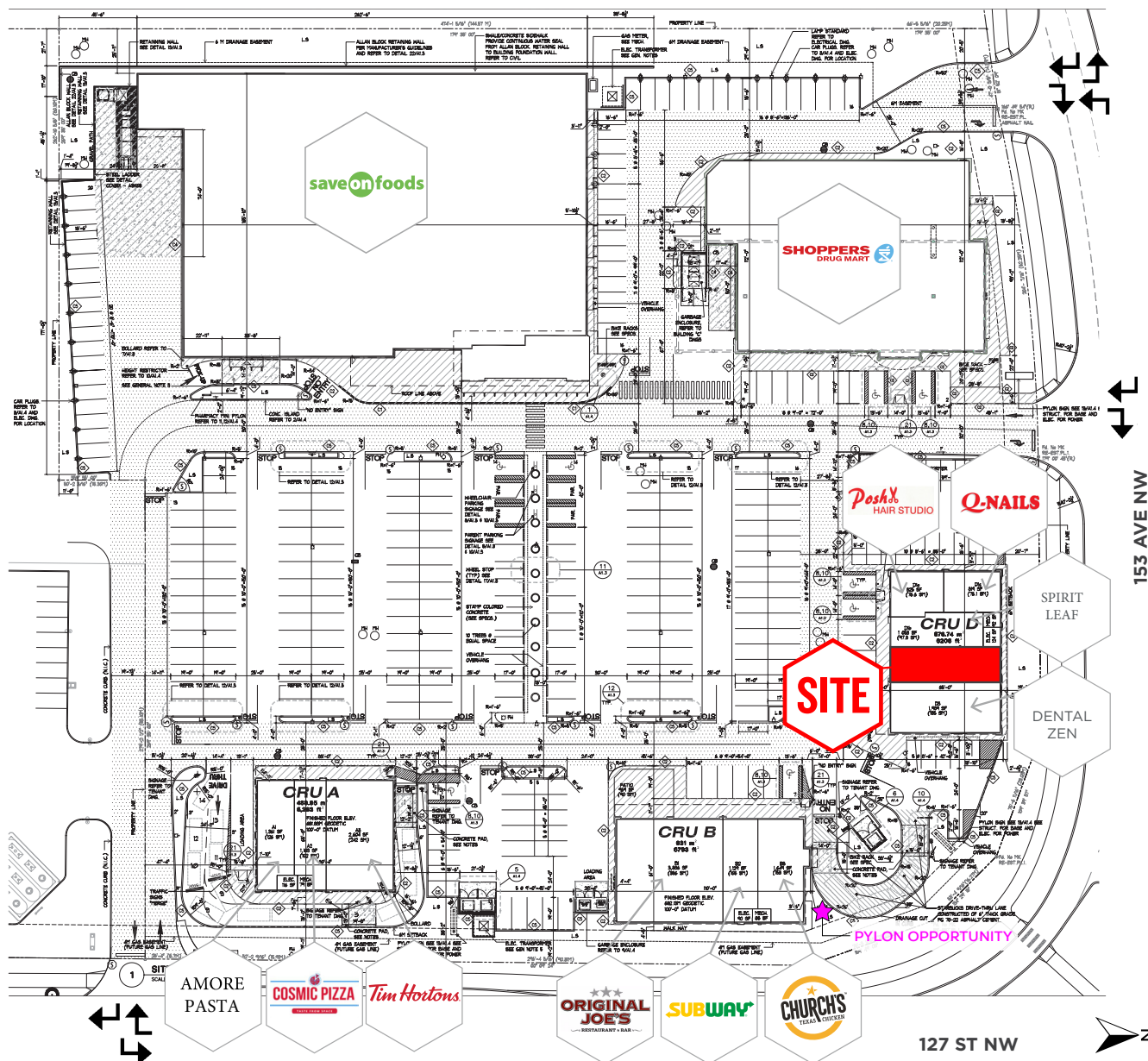
# DEMOGRAPHICS

	5 MIN	10 MIN	15MIN
2024 Population	47,886	171,109	424,254
2029 Populations Projections	55,254	196,025	466,785
2024 Daytime Population	44,509	279,903	543,707
2024 Average HH Income	\$100,738	\$99,980	\$107,702

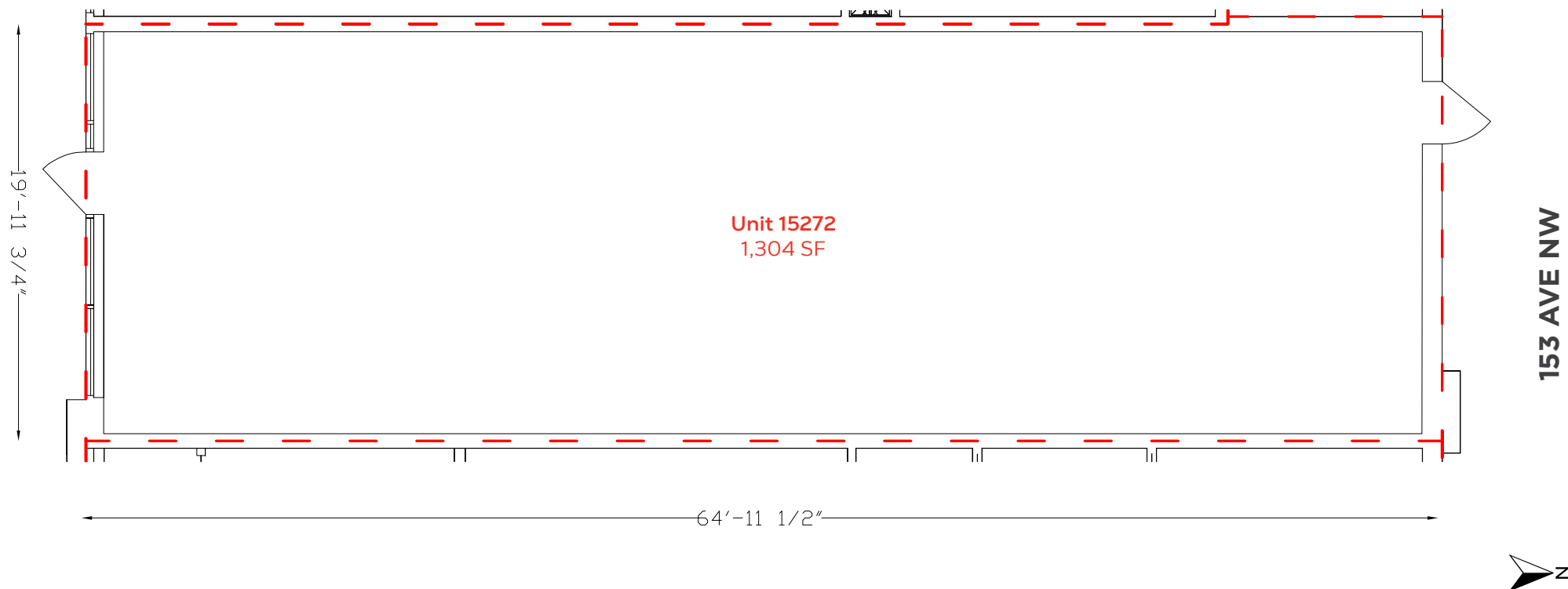
# CONTACT

NICK FISHER Personal Real Estate Corporation Partner  604.628.2581 nick@sitings.ca	BRANDON SIBAL Personal Real Estate Corporation Vice President  604.628.2582 brandon@sitings.ca
---	---

# SITE PLAN



# FLOOR PLAN



[VIRTUAL TOUR](#)



# EXTERIOR PHOTOS



VIRTUAL TOUR





# INTERIOR PHOTOS

