



# PORTHAVEN

PO  
CO

2265 Wilson Avenue  
Port Coquitlam, BC

RETAIL STRATA FOR SALE

**ARJEN HEED**  
Senior Associate  
604.416.5583  
arjen@sitings.ca

**SHELDON SCOTT**  
Personal Real Estate Corporation  
604.416.5582  
sheldon@sitings.ca



**SITINGS REALTY LTD.**  
SITINGS.CA / 604.684.6767  
1595 – 650 West Georgia Street, Vancouver, BC V6B 4N8



# PROJECT SUMMARY

Porthaven is a mixed-use development comprising of 108 residential units and 10 commercial retail units totaling nearly 17,000 square feet in the heart of Downtown Port Coquitlam. Highlights include:

- Ability to own, and secure commercial space at one of the first modern mixed-use projects in Port Coquitlam's Downtown core
- Engaging street-level design adjacent to the soon to be revitalized Leigh Square
- Steps away from City Hall and the newly constructed \$132 Million Dollar PoCo Community Centre
- 9-minute walk to West Coast Express and potential for future SkyTrain expansion



This document/email has been prepared by Sitings Realty Ltd. for advertising and general information only. Although information contained herein is from sources we believe reliable, Sitings Realty Ltd. makes no guarantees, representations or warranties of any kind, expressed or implied, regarding the information including, but not limited to, warranties of content, accuracy and reliability. This document/email is subject to errors and omissions and any interested party should undertake their own inquiries as to the accuracy of the information. Sitings Realty Ltd. excludes unequivocally all inferred or implied terms, conditions and warranties arising out of this document and excludes all liability for loss and damages arising there from. All areas, measurements and dimension herein are approximate, interested parties/tenant are to verify measurements if important to them. This document/email is not an inducement representation.



SITINGS.CA  
604.684.6767 2

## DETAILS

### ✦ Available Units:

✦ CRU 4: 1,182 SF

✦ CRU 5: 981 SF

✦ CRU 6: 1,555 SF

✦ Available: Q1 2027

✦ Asking Price: Please Contact Listing Agent

✦ Strata Fees: \$10.15/SF/YR (Estimated for Year 1)

✦ Parking: 5 stalls (potential for access to 11 additional stalls during business hours)

✦ Zoning: Community Commercial

## AREA TENANTS



## DEMOGRAPHICS

	3 min	5 min	10 min
2023 Population	11,193	31,666	158,708
2028 Populations Projections	12,068	33,968	172,730
2023 Daytime Population	8,927	26,419	134,001
2023 Average HH Income	\$96,863	\$112,326	\$126,574

## CONTACTS

### ARJEN HEED

Senior Associate  
Sittings Realty Ltd

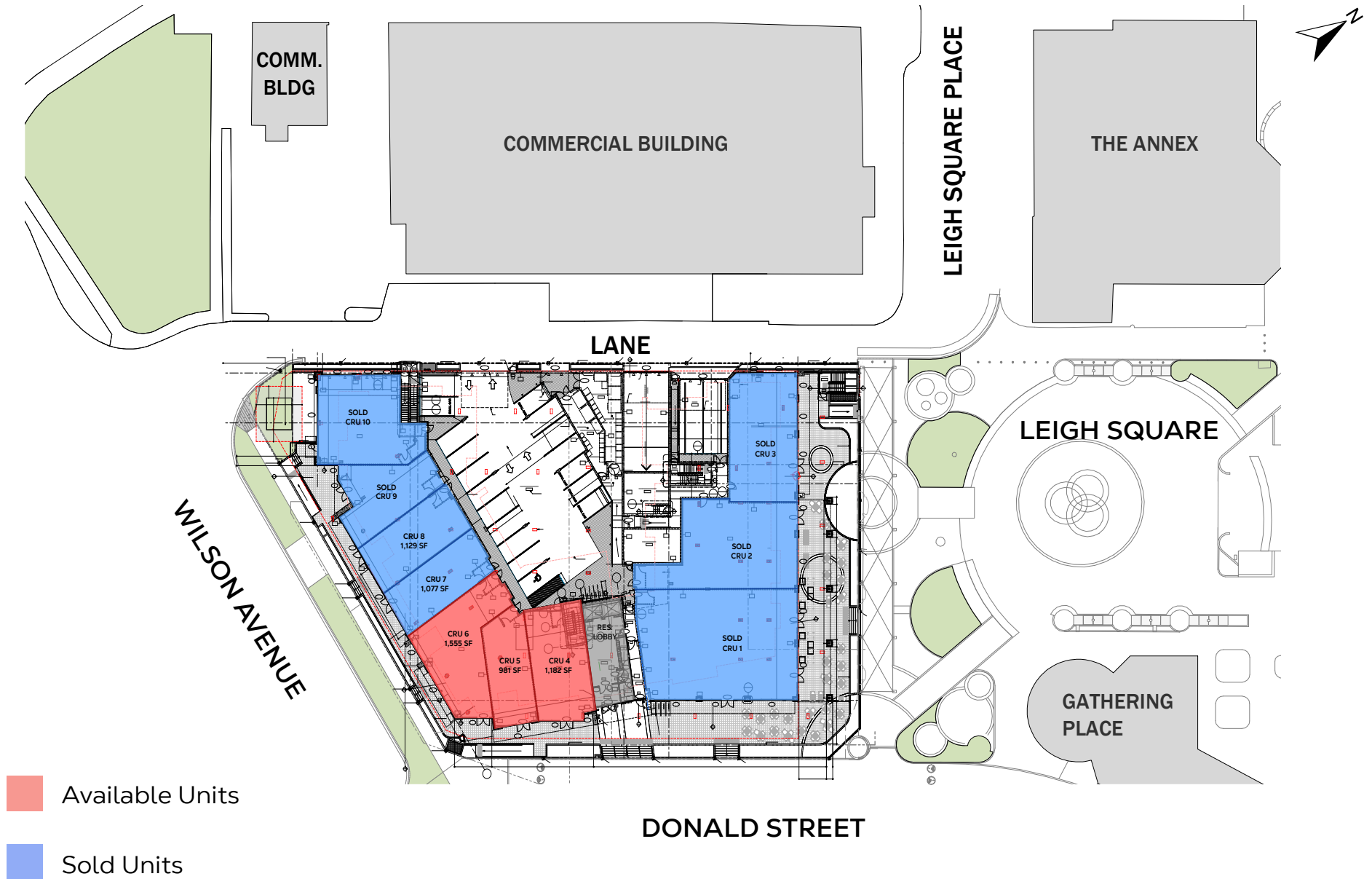
604.416.5583  
arjen@sittings.ca

### SHELDON SCOTT

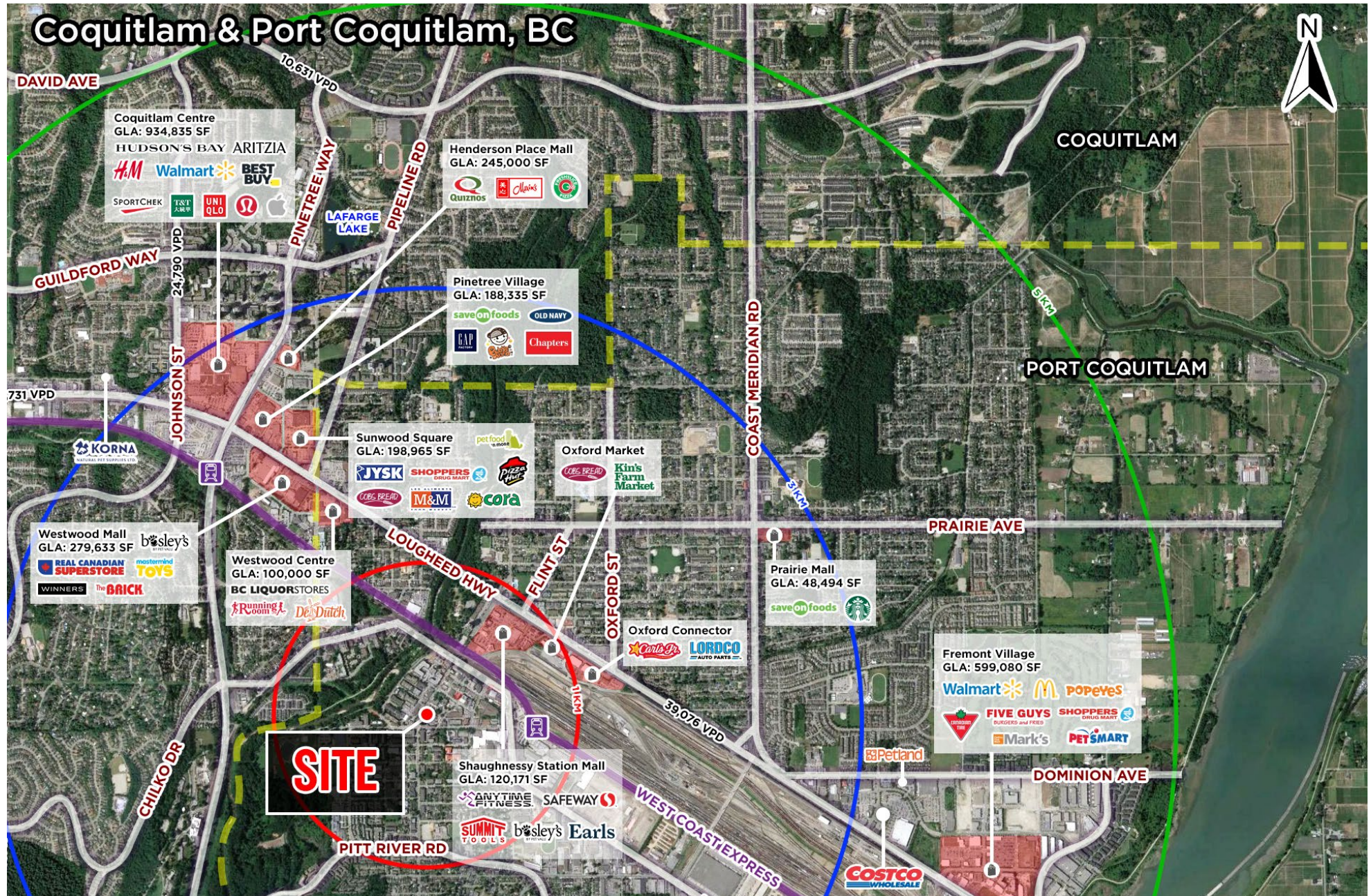
Personal Real Estate Corporation  
Sittings Realty Ltd

604.416.5582  
sheldon@sittings.ca

# SITE PLAN









# RENDERINGS



Introducing Porthaven, a community of 108 homes situated in the heart of Downtown Port Coquitlam, offering a vibrant living experience that combines natural beauty, urban conveniences, and a strong sense of community. With nearby hiking trails, top-notch dining and shopping options, and the new second largest community centre in BC, Port Coquitlam provides endless recreational opportunities.

## The TriCities' FUTURE SkyTrain City!

Get ready for the best investment opportunity because Port Coquitlam has caught the eye of Translink and has the potential to become a future home for a SkyTrain station.

Imagine being one of the pioneers to buy into an undiscovered opportunity at the fastest-selling project in Port Coquitlam. With the SkyTrain expansion set to transform, Port Coquitlam is poised to become one of THE hub of connectivity in the TriCities.

