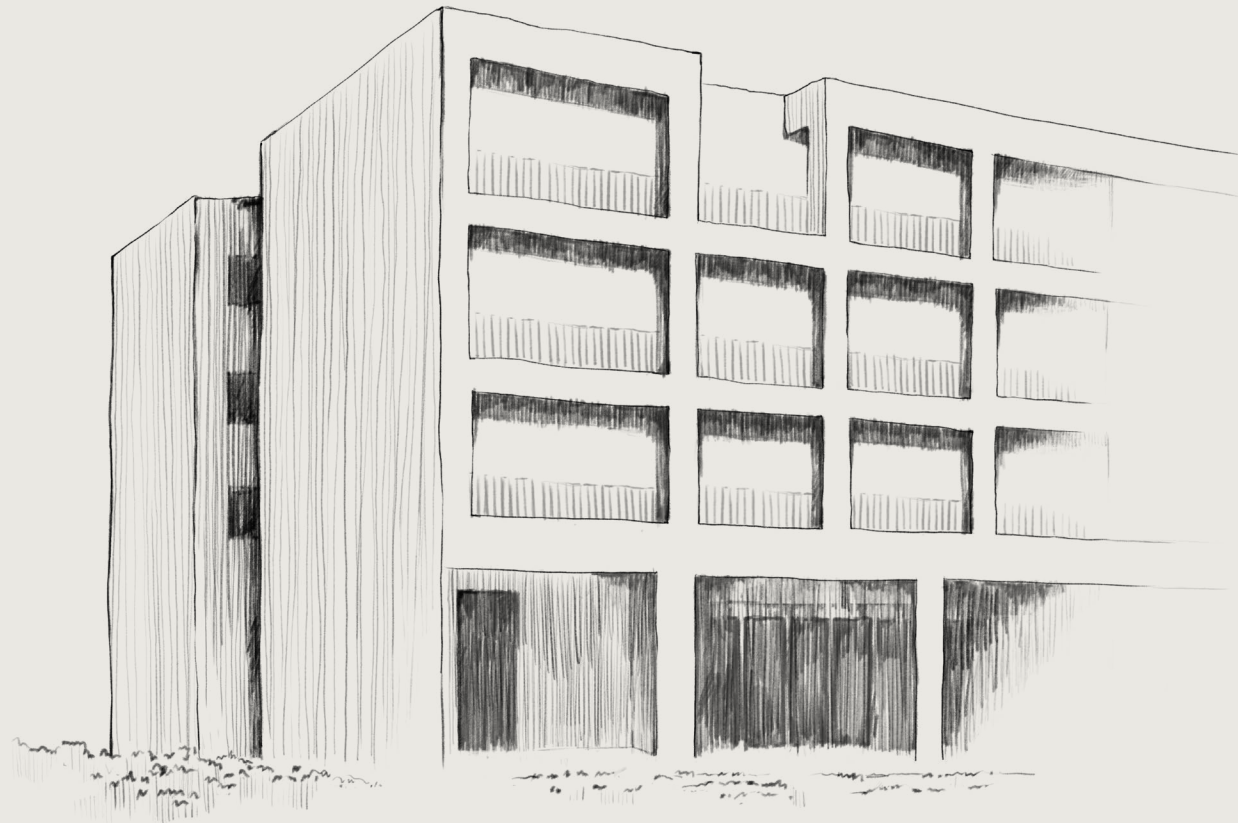


# naímo

EAST VAN



A HUDSON PROJECT



PREMIUM RETAIL STRATA  
UNITS FOR PRE-SALE

2250 NANAIMO STREET  
VANCOUVER, BC



SHELDON SCOTT  
Personal Real Estate Corporation  
604.416.5582  
sheldon@sitings.ca

KAYLA MORROW  
Senior Associate  
604.416.5584  
kayla@sitings.ca





# Modern craft on an intimate scale.

Introducing Naimo, an intimate mixed-use community under construction in the vibrant neighborhood of Grandview-Woodland, East Van. Offering 38 residential strata homes and 5 commercial-retail spaces at street level.





## Project Highlights.

- Walking distance from the Commercial-Broadway Skytrain Station, the third busiest transit hub in Western Canada.
- Strong retail exposure with approximately 11,130 vehicles passing by daily.
- Neighbourhood is projected to grow by 10,000 residents over the next 30 years, as outlined in the Grandview-Woodland Community Plan.
- Features well-designed, small-format commercial units that cater to a variety of business needs.



# Project Details.



## Municipal Address

2250 Nanaimo Street, Vancouver, BC



## Proposed Vehicle Access/Egress

Laneway access on E 6th and E 7th Avenue



## Power

Up to 400 amp



## Retail

811 up to 4,793 sf total



## Zoning

C-2



## Ceiling Height

Up to 17 ft



## Residential

38 strata residential homes



## Commercial Parking

7 commercial parking stalls



## Estimated Occupancy

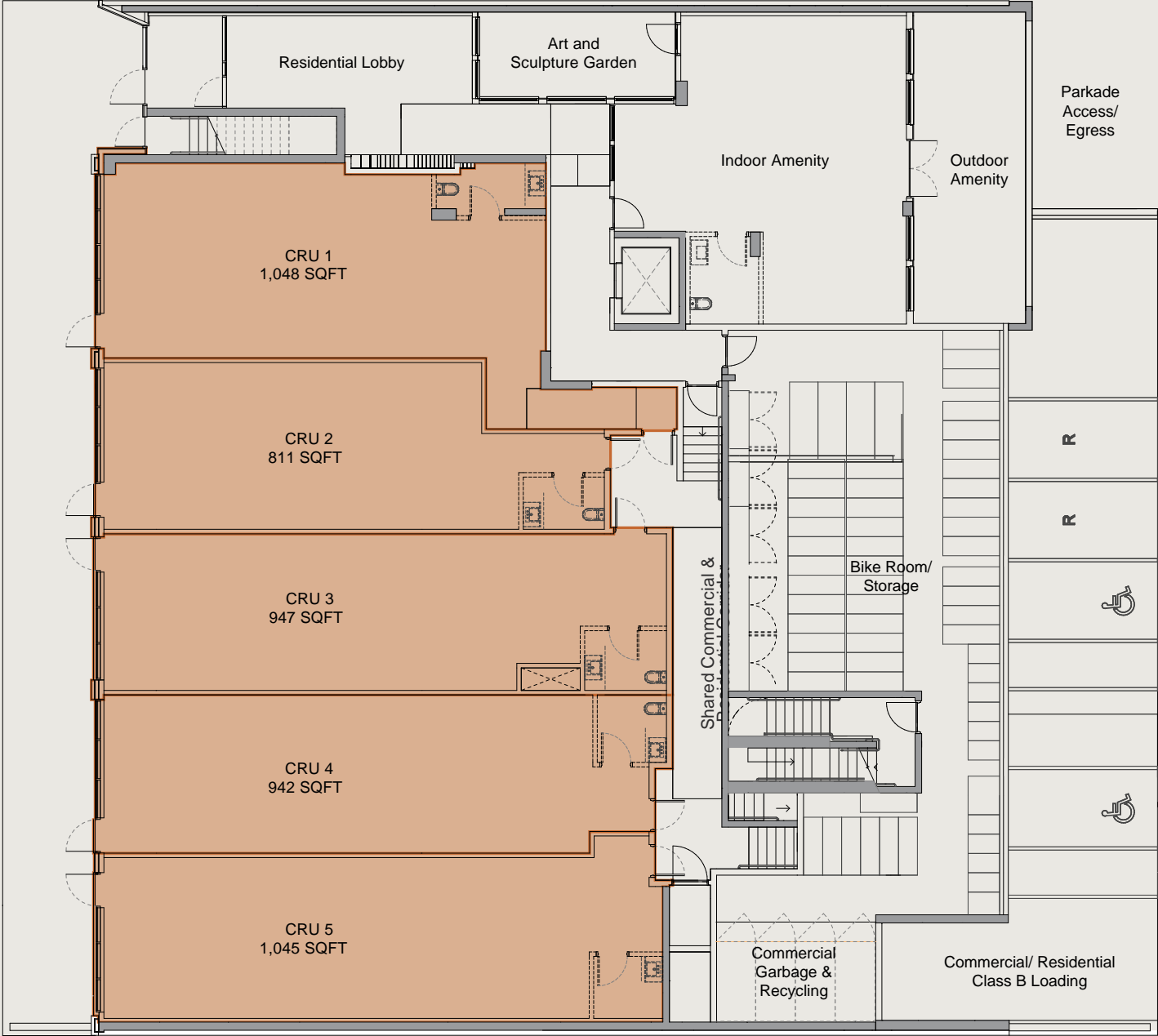
Q2 2027



## Commercial Loading

1 Class B Loading





Nanaimo Street

UNIT	SIZE (SQFT)	WIDTH (FT)	DEPTH (FT)	CEILING HEIGHT (FT)	POWER (AMPS)
CRU 1	1,048	21'7"	44'3"	16'4"	
CRU 2	811	17'5"	59'7"	16'5"	
CRU 3	947	16'4"	56'4"	17'4"	
CRU 4	942	16'6"	56'4"	18'4"	
CRU 5	1,045	18'3"	56'4"	18' 5"	

Please contact Listing Agents for pricing and availability.

# Retail Strata Plan.





# The Neighbourhood.

Naimo is ideally positioned in the vibrant and evolving Grandview-Woodland neighbourhood of East Vancouver. Situated along Nanaimo Street, the project is a 2-minute walk from East Broadway Street, one of Vancouver's main East-West corridors, offering seamless connections to Downtown Vancouver and Burnaby. 2250 Nanaimo Street is a strategic and desirable place for commercial businesses in one of the city's most well-connected neighbourhoods.



# About Hudson.

Hudson is a Vancouver-based real estate developer. They create uniquely aspirational spaces that fit within the urban fabric of the communities they work in. Working with a growing group of talented artists, architects, designers and craftspeople, they aspire to design and build forward-thinking sustainable communities.



# naímo

EAST VAN

SHELDON SCOTT  
Personal Real Estate Corporation  
604.416.5582  
sheldon@sitings.ca

KAYLA MORROW  
Senior Associate  
604.416.5584  
kayla@sitings.ca

SITINGS REALTY LTD  
1595-650 West Georgia Street  
Vancouver, BC

COMMERCIAL SALES BY



DEVELOPED BY

