



PINE CENTRE

800 Pine Road
Strathmore, AB

PROPERTY LEASING BROCHURE



BRANDON SIBAL

Vice President

604.628.2582

brandon@sitings.ca

SITINGS REALTY LTD.

SITINGS.CA / 604.684.6767

1595 – 650 West Georgia Street, Vancouver, BC V6B 4N8

PROJECT SUMMARY

Pine Centre is a well positioned, highly visible strip centre that is strategically located just 35 km east of Calgary in Strathmore, Alberta. The site is anchored by a 40,000 SF No Frills grocery store, Dollar Tree and Canadian Tire, with an all-turns signalled intersection, traffic can easily enter & exit the site off of Highway 1, Canada's major East/West transportation route.

Join other tenants like Tim Hortons, McDonald's, Boston Pizza, Fire and Flower, and Scotiabank.

- Strathmore's population has increased by 5.9% over the last 5 years and is expected to show strong and steady growth of 5.8% over the next 5 years.
- The town's economy base is diversified with manufacturing, cattle operations, agriculture, public sector, and oil and gas.
- The town has available services to double in size and has a number of Area Structure Plans in progress.



DETAILS

- ✦ 1,519 SF available
- ✦ Signage: Highway 1 Pylon & Building Signage
- ✦ Highway 1: 26,350 VPD
- ✦ Additional Rent: \$11.90 PSF
- ✦ 187 Surface Parking
- ✦ Contact Listings Agent for Rates

 VIRTUAL TOUR (End-Cap Unit)

AREA TENANTS



DEMOGRAPHICS

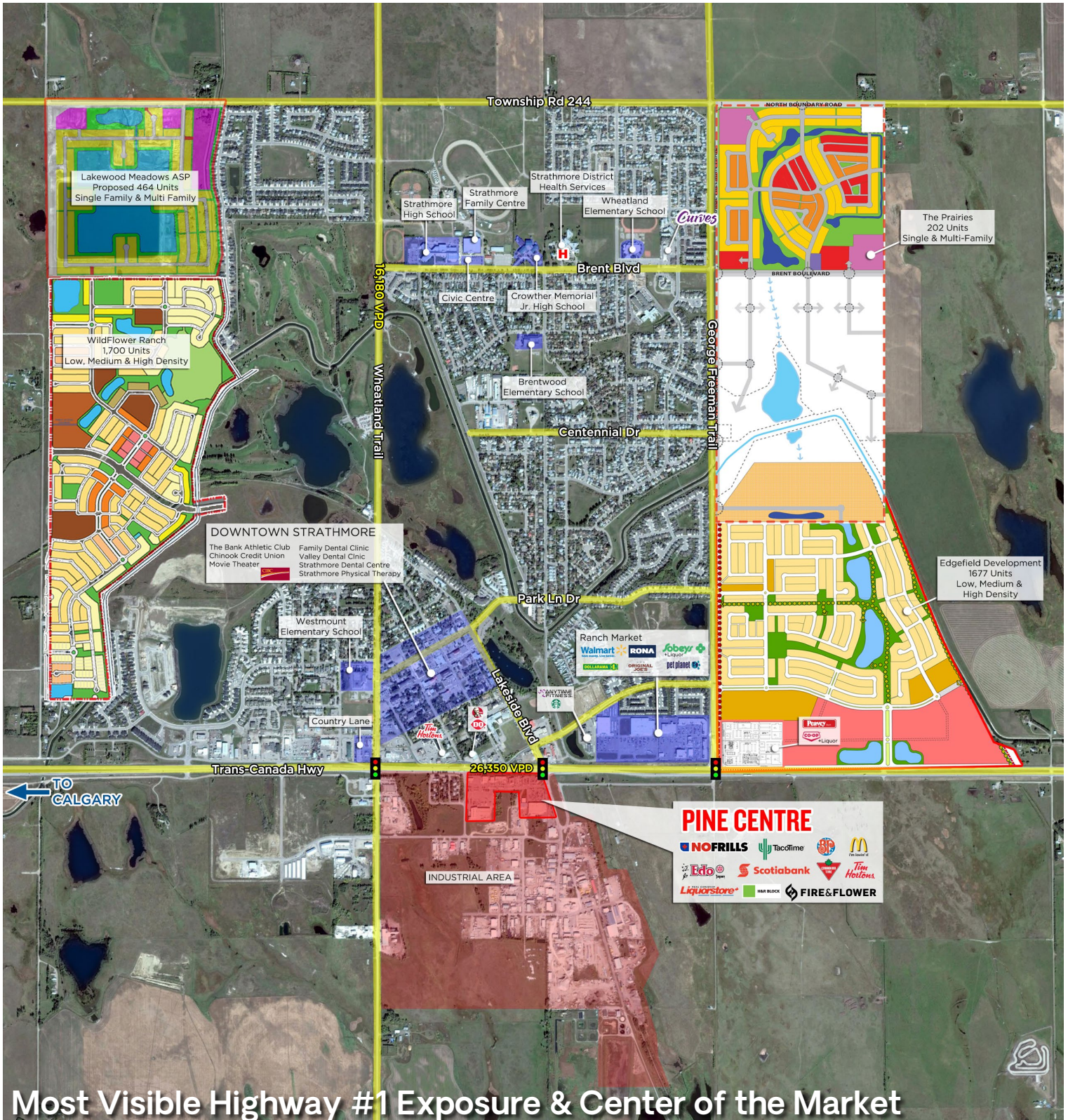
	1KM	3KM	5KM	TRADE AREA
2024 Population	2,178	12,540	15,873	30,254
2029 Population	2,314	13,310	16,739	32,001
2024 Avg HH Income	\$78,874	\$97,180	\$97,597	\$96,798
2024 Daytime Population	2,483	10,908	14,186	25,241

CONTACT

BRANDON SIBAL

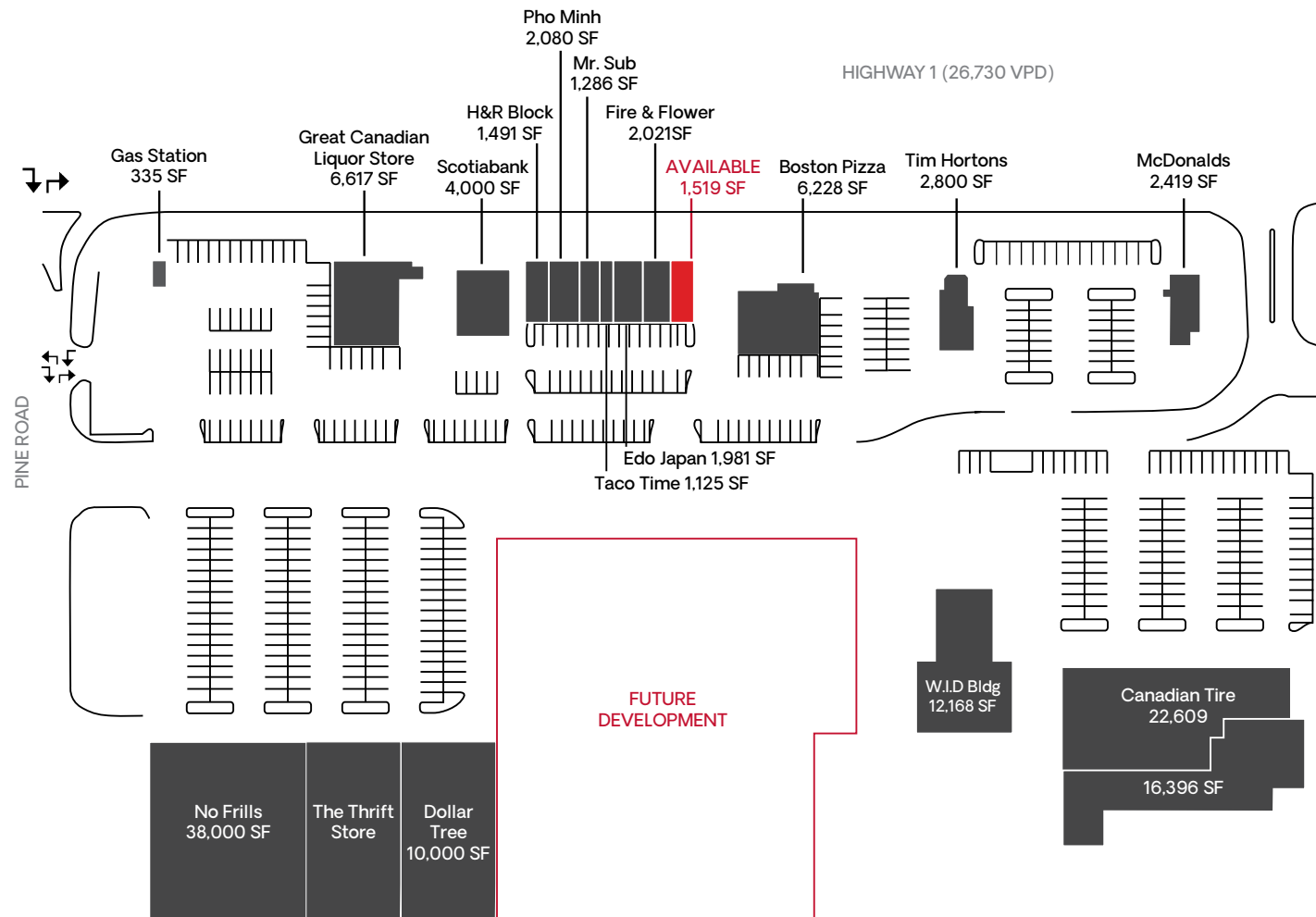
Vice President
Sitings Realty Ltd

604.628.2582
brandon@sitings.ca



Most Visible Highway #1 Exposure & Center of the Market

This document/email has been prepared by Sitings Realty Ltd. for advertising and general information only. Although information contained herein is from sources we believe reliable, Sitings Realty Ltd. makes no guarantees, representations or warranties of any kind, expressed or implied, regarding the information including, but not limited to, warranties of content, accuracy and reliability. This document/email is subject to errors and omissions and any interested party should undertake their own inquiries as to the accuracy of the information. Sitings Realty Ltd. excludes unequivocally all inferred or implied terms, conditions and warranties arising out of this document and excludes all liability for loss and damages arising there from. All areas, measurements and dimension herein are approximate, interested parties/tenant are to verify measurements if important to them. This document/email is not an inducement representation.



VIRTUAL TOUR (End-Cap Unit)

