



#17-4318 MAIN ST

Whistler, BC

NOW LEASED!

Property Leasing Brochure

SITINGS REALTY LTD.

SITINGS.CA / 604.684.6767

1595 - 650 West Georgia Street, Vancouver, BC V6B 4N8

SUMMARY

VIRTUAL TOUR

Rare opportunity to lease premium retail space centrally located along the Village Stroll steps away from the Whistler Olympic Plaza, Day Lot Parking, Marketplace and Whistler & Blackcomb gondolas. Nestled in the heart of Whistlers retail node, this site provides tenants with convenient access to both local and tourism traffic. Ranked as one of the world's best year-round resorts, Whistler offers epic skiing across two mountains, unparalleled mountain biking, 4 golf courses, numerous hiking trails and a vibrant village with unbeatable shopping, restaurants and bars.

DETAILS

 **SIZE: 907 SF**

 **NOW LEASED!**

 **END-CAP UNIT WITH EXCELLENT SIGNAGE**

 **LOOKING FOR RETAIL SPACE IN WHISTLER?
CALL US TO DISCUSS!**

 **CENTRAL VILLAGE STROLL LOCATION**

AREA TENANTS



DEMOGRAPHICS

DRIVE TIMES	3 MIN	5 MIN	10 MIN	WHISTLER
2020 POPULATION	1,943	4,937	11,497	14,923
2025 POPULATION	2,221	5,577	12,844	16,903
2020 DAYTIME POPULATION	4,612	11,359	14,534	17,556
2020 AVERAGE HH INCOME	\$114,412	\$118,726	\$134,531	\$132,514

CONTACT

NANCY BAYLY

Personal Real Estate Corporation
Sittings Realty Ltd

604.628.2580

nancy@sittings.ca

This document/email has been prepared by Sittings Realty Ltd. for advertising and general information only. Although information contained herein is from sources we believe reliable, Sittings Realty Ltd. makes no guarantees, representations or warranties of any kind, expressed or implied, regarding the information including, but not limited to, warranties of content, accuracy and reliability. This document/email is subject to errors and omissions and any interested party should undertake their own inquiries as to the accuracy of the information. Sittings Realty Ltd. excludes unequivocally all inferred or implied terms, conditions and warranties arising out of this document and excludes all liability for loss and damages arising therefrom. All areas, measurements and dimension herein are approximate, interested parties/tenant are to verify measurements if important to them. This document/email is not an inducement representation.

TRADE AREA

WHISTLER LOCAL POPULATION

13,613

ANNUAL VISITATION

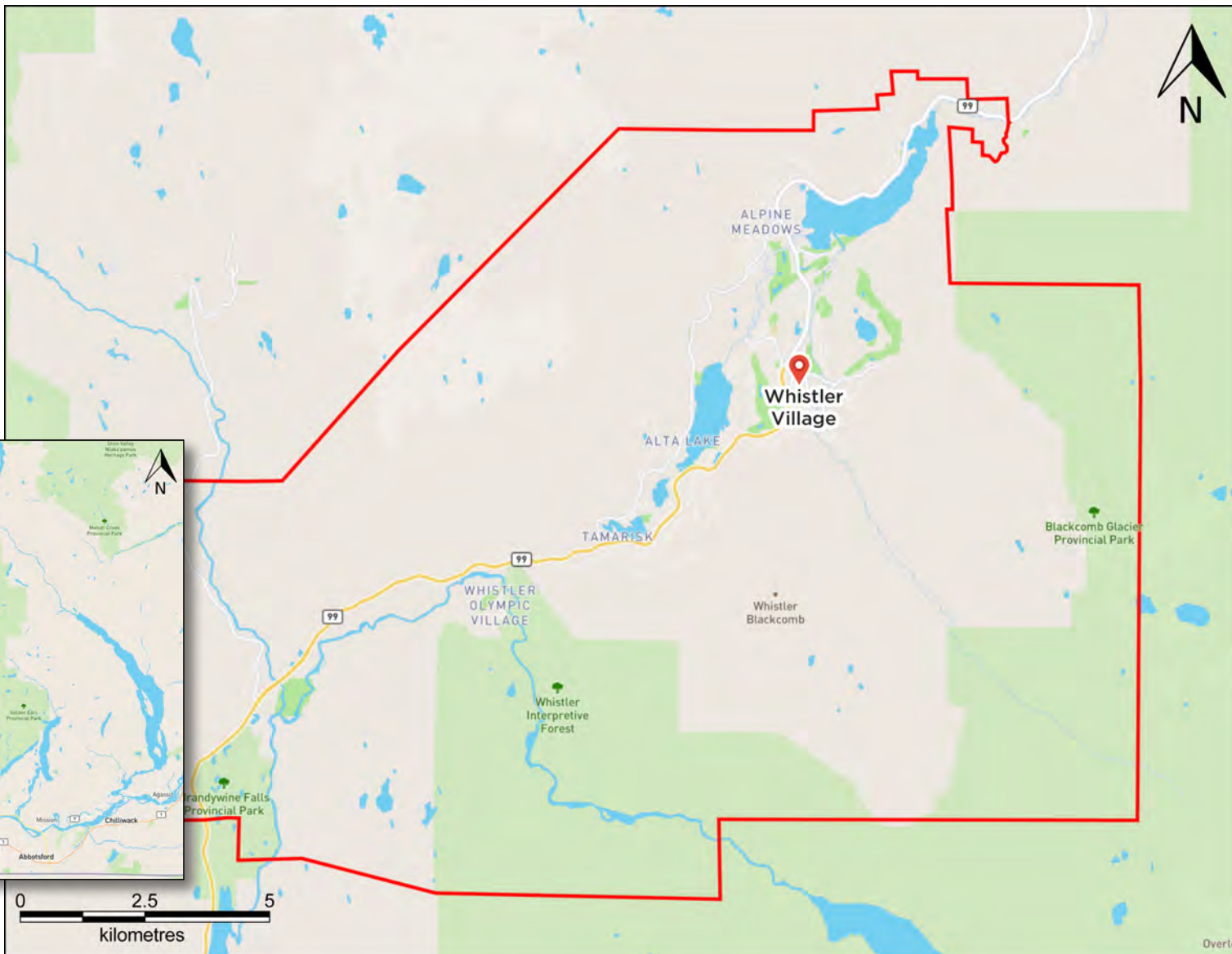
3.3 Million

(Approx. 45% Winter/55% Summer)

RESORT CAPACITY

35,000 Overnight visitors

Daily population 35,000 - 70,000
during peak times



This document/email has been prepared by Sitings Realty Ltd. for advertising and general information only. Although information contained herein is from sources we believe reliable, Sitings Realty Ltd. makes no guarantees, representations or warranties of any kind, expressed or implied, regarding the information including, but not limited to, warranties of content, accuracy and reliability. This document/email is subject to errors and omissions and any interested party should undertake their own inquiries as to the accuracy of the information. Sitings Realty Ltd. excludes unequivocally all inferred or implied terms, conditions and warranties arising out of this document and excludes all liability for loss and damages arising there from. All areas, measurements and dimension herein are approximate, interested parties/tenant are to verify measurements if important to them. This document/email is not an inducement representation.

WHISTLER AERIAL

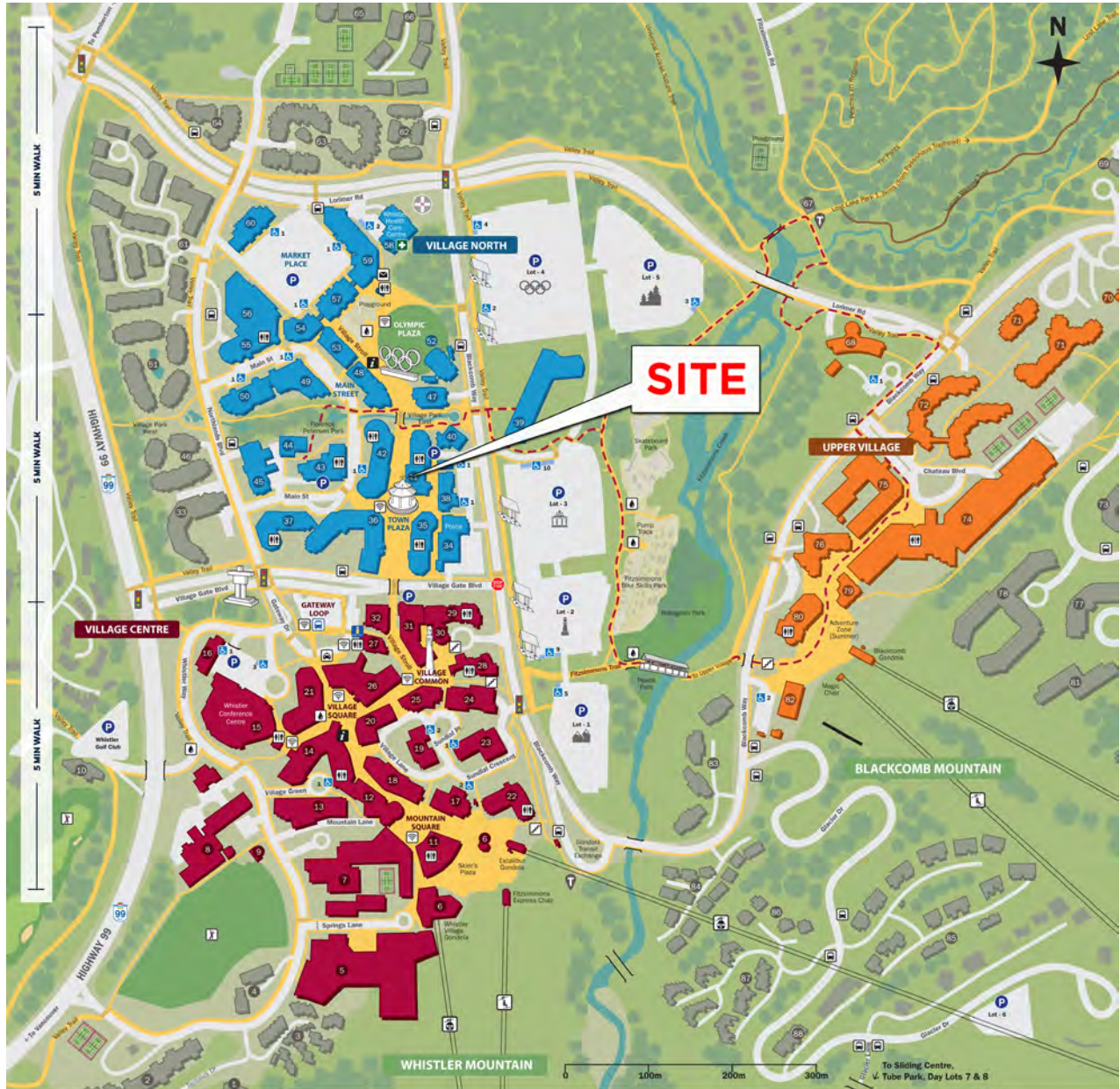
#17-4318 MAIN ST.
Whistler, BC



This document/email has been prepared by Sitings Realty Ltd. for advertising and general information only. Although information contained herein is from sources we believe reliable, Sitings Realty Ltd. makes no guarantees, representations or warranties of any kind, expressed or implied, regarding the information including, but not limited to, warranties of content, accuracy and reliability. This document/email is subject to errors and omissions and any interested party should undertake their own inquiries as to the accuracy of the information. Sitings Realty Ltd. excludes unequivocally all inferred or implied terms, conditions and warranties arising out of this document and excludes all liability for loss and damages arising there from. All areas, measurements and dimension herein are approximate, interested parties/tenant are to verify measurements if important to them. This document/email is not an inducement representation.

WHISTLER VILLAGE MAP

#17-4318 MAIN ST.
Whistler, BC



LEGEND

- Village North/Neighbourhoods
- Main Street, Market Place, Olympic Plaza, Town Plaza
- Village Centre/Neighbourhoods
- Conference Centre, Gateway Loop, Mountain Square, Skier's Plaza, Village Common, Village Square
- Upper Village
- Parking Area
- Learn more at whistler.ca/parking
- P Accessible Parking
- Pedestrian Path
- Cultural Connector
- Learn more at whistler.ca/culturalconnector
- + Emergency Services
- + Public Restrooms
- + Visitor Centre
- + Village Host
- + Stairway
- + Vancouver Bus Stop
- + Bus Stop
- + Taxi
- + Golf Course
- + Gondola
- + Chairlift
- + Post Office
- + Free Whistler WiFi Area
- + Water Bottle Fill Station
- Only available in summer
- + Trailhead

VILLAGE DIRECTORY

- | | | | |
|---|--|---|--|
| <p>Information</p> <ul style="list-style-type: none"> 27 Whistler Visitor Centre <p>Emergency Services</p> <ul style="list-style-type: none"> 58 Ambulance 34 Fire 34 R.C.M.P. (Police) <p>Medical & Dental Services</p> <ul style="list-style-type: none"> 57 Coast Medical 42 Town Plaza Medical Clinic 36 Whistler Dental Office 63 Whistler Health Care Centre 50 Whistler Smiles <p>Accommodations</p> <ul style="list-style-type: none"> 8 Aava Whistler Hotel 14 Adara Hotel 50 AlpenGlow 26 Blackcomb Lodge 11 Carlton Lodge 33 Cascade Lodge 18 Clock Tower Hotel 12 Crystal Lodge 32 Crystal Lodge 36, 37 Delta Whistler Village Suites 72 Embarc 18 Executive Inn 74 The Fairmont Chateau Whistler 20 Fitzsimmons Condos 74 Four Seasons Resort Whistler 83 The Gables 75 Glacier Lodge 63 Glacier's Reach 62 Granite Court 21 Hearststone Lodge 7 Hilton Whistler Resort & Spa 10 Le Chamois 13 Lister Whistler Hotel <p>Building Names</p> <ul style="list-style-type: none"> 1 Northern Lights 2 Tantalus Lodge 3 Telemark Place 4 Mountain Edge 5 The Westin Resort & Spa 6 Whistler Village Gondola & Whistler Blackcomb Guest Relations + Tickets | <ul style="list-style-type: none"> 55 Market Pavilion 57, 59 MarketPlace Lodge 23 Mountaineer Lodge 3 Northern Lights 62 Pan Pacific Whistler Mountaineer 23 Pan Pacific Whistler Village Centre 18 Pangea Pod Hotel 7 Powder's Edge 21 Rainbow Building 10 Royal Suite 84 Snowy Creek 25 St. Andrews House 17 Sundial Boutique Hotel 17 Sundial Boutique Hotel 18 Pangea Pod Hotel, Clock Tower Hotel & Executive Inn 15, 24 Whistler Village Inn & Suites 20 Fitzsimmons Condos 21 Hearststone Lodge 21 Rainbow Suites, Windwhistle 22 Pan Pacific Whistler Mountaineer 22 Mountaineer Lodge 25 St. Andrews House 26 Blackcomb Lodge/Professional Building 27 Gatehouse Building 28 Whistler Village Centre 29 Pan Pacific Whistler Village Centre 32 Village Gate House 33 Cascade Lodge 34 Police, Fire Hall, Bylaw (Emergency 911) 25 Town Plaza Suites, Bear Lodge 36, 37 Delta Whistler Village Suites 28 Municipal Hall 39 Audan Art Museum | <ul style="list-style-type: none"> 40 Maury Young Arts Centre 41 Town Plaza Suites, Eagle Lodge 9 Whistler Golf Club Driving Range/Whistler Heli-Skiing Powder Hut (Winter) 43 Whistler Public Library 44 Whistler Museum & Archives 45 Whistler Pinacle 46 Stoney Creek Sunpath 47 Brewhouse Restaurant & Pub 48, 53 Tyndall Stone Lodge 49 Summit Lodge Boutique Hotel 50 AlpenGlow 51 Stoney Creek Lagoons 18 Pangea Pod Hotel, Clock Tower Hotel & Executive Inn 54, 57, 59 MarketPlace Lodge 55 Market Pavilion 51 Fresh Street Market 58 Whistler Health Care Centre 60 Marketplace Professional Building 61 Valhalla/Twin Peaks Resorts/Stoney Creek North Star 62 Granite Court 63 Glacier's Reach 64 Symphony at Whistler 65 Whistler Racquet Club 66 Montebello Townhomes 67 Lost Lake PassivHaus 68 Squamish Lil'wat Cultural Centre 69 Fairmont Chateau Whistler Golf Club 70 Four Seasons Residences Whistler 71 Four Seasons Resort Whistler 72 Embarc 73 Marquise 74 The Fairmont Chateau Whistler 75 Glacier Lodge | <ul style="list-style-type: none"> 76 Le Chamois 77 Greystone Lodge 78 Aspens 79 Milestones Grill + Bar 90 Whistler Blackcomb Guest Relations + Tickets 81 The Woodruff Lodge 82 Whistler Blackcomb Administration & Whistler Kids 83 The Gables 84 Snowy Creek 85 Pinnacle Ridge 86 Cedar Hollow 87 Cedar Ridge 88 Snowcrest |
|---|--|---|--|

ASK WHISTLER LIVE CHAT

Get insider tips on things to do, restaurant suggestions, directions and visitor information.

Need assistance? Just Ask Whistler!

Facebook Messenger @GoWhistler

WhatsApp 1.604.265.9600

SMS 1.604.265.9600

For SMS/text, your mobile provider's standard rates apply.

Scan to learn more and connect by using your phone's camera.

WHISTLER.COM/CHAT

Connect with us: [Facebook](https://www.facebook.com/GoWhistler) [Instagram](https://www.instagram.com/GoWhistler) [TikTok](https://www.tiktok.com/@GoWhistler) @GoWhistler

WHISTLER.COM/VILLAGE-DIRECTORY | 1.800.944.7853

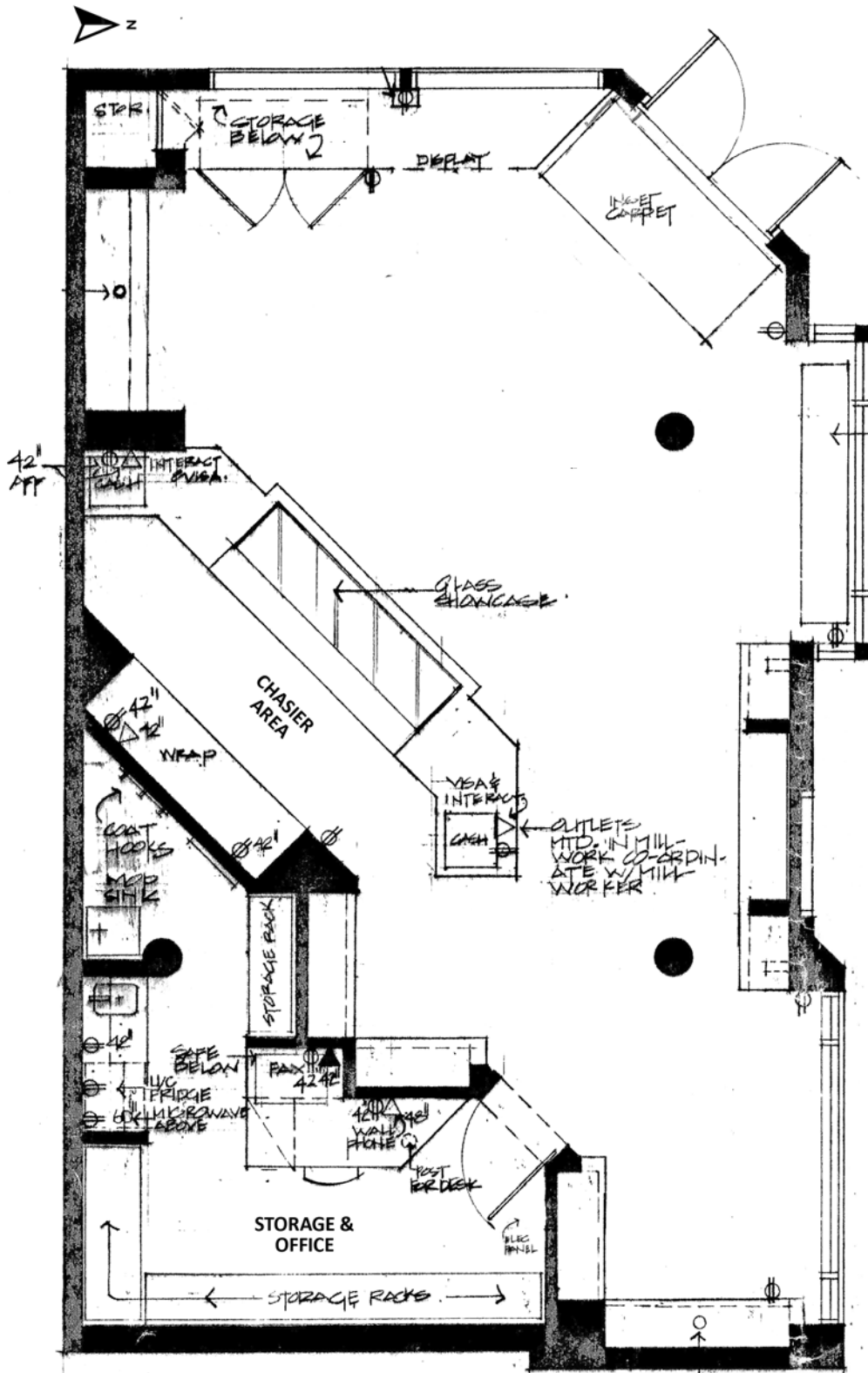
This document/email has been prepared by Sitings Realty Ltd. for advertising and general information only. Although information contained herein is from sources we believe reliable, Sitings Realty Ltd. makes no guarantees, representations or warranties of any kind, expressed or implied, regarding the information including, but not limited to, warranties of content, accuracy and reliability. This document/email is subject to errors and omissions and any interested party should undertake their own inquiries as to the accuracy of the information. Sitings Realty Ltd. excludes unequivocally all inferred or implied terms, conditions and warranties arising out of this document and excludes all liability for loss and damages arising there from. All areas, measurements and dimension herein are approximate, interested parties/tenant are to verify measurements if important to them. This document/email is not an inducement representation.



This document/email has been prepared by Sitings Realty Ltd. for advertising and general information only. Although information contained herein is from sources we believe reliable, Sitings Realty Ltd. makes no guarantees, representations or warranties of any kind, expressed or implied, regarding the information including, but not limited to, warranties of content, accuracy and reliability. This document/email is subject to errors and omissions and any interested party should undertake their own inquiries as to the accuracy of the information. Sitings Realty Ltd. excludes unequivocally all inferred or implied terms, conditions and warranties arising out of this document and excludes all liability for loss and damages arising there from. All areas, measurements and dimension herein are approximate, interested parties/tenant are to verify measurements if important to them. This document/email is not an inducement representation.

FLOOR PLAN

 **VIRTUAL TOUR**



WHISTLER EVENTS & CULTURE

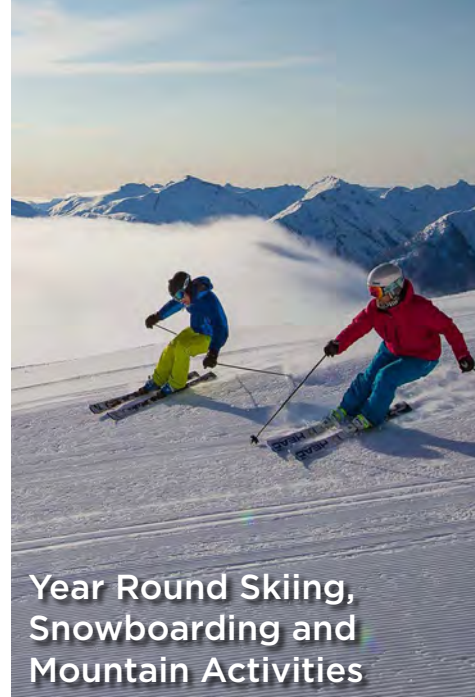
#17-4318 MAIN ST.
Whistler, BC



Vibrant Village



Crankworkx



Year Round Skiing,
Snowboarding and
Mountain Activities



Beautiful Lakes



Whistler Ski &
Snowboard Festival



Olympic Plaza
Events & Outdoor Concerts



Nicklaus North,
Whistler, Fairmont &
Big Sky Golf Courses

This document/email has been prepared by Sitings Realty Ltd. for advertising and general information only. Although information contained herein is from sources we believe reliable, Sitings Realty Ltd. makes no guarantees, representations or warranties of any kind, expressed or implied, regarding the information including, but not limited to, warranties of content, accuracy and reliability. This document/email is subject to errors and omissions and any interested party should undertake their own inquiries as to the accuracy of the information. Sitings Realty Ltd. excludes unequivocally all inferred or implied terms, conditions and warranties arising out of this document and excludes all liability for loss and damages arising there from. All areas, measurements and dimension herein are approximate, interested parties/tenant are to verify measurements if important to them. This document/email is not an inducement representation.