



TRI-CITY MALL

6603, 6503, 6403 51st Avenue
Cold Lake, AB

PROPERTY LEASING BROCHURE



DAN CLARK
Personal Real Estate Corporation
604.628.2577
dan@sitings.ca

BRANDON SIBAL
Vice President
604.628.2582
brandon@sitings.ca

SITINGS REALTY LTD.
SITINGS.CA / 604.684.6767
1595 – 650 West Georgia Street, Vancouver, BC V6B 4N8

PROJECT SUMMARY

The Tri-City Mall is located in Cold Lake, Alberta, approximately 240 km northeast of the City of Edmonton and 132 km north of Lloydminster. Strategically placed, Tri-City Mall is located along Highway #28, between North and South Cold Lake to service the entire residential populace.

- New pad (Building 6), with opportunities from 2,500 - 5,500 SF.
- Cold Lake is an important oil industry centre of operations, has one of the largest Armed Forces bases in Canada, and is a tourism centre with Western Canada's largest inland marina.
- Recent tenants that have opened at Tri-City Mall include: Winners, Sport Chek, Dollar Tree, Warehouse One, Ardene & Fire & Flower.

HIGHLIGHTED NEWS



[Cold Lake is about to boom](#)
Global News - May 26, 2023



[Imperial Oil hoping Cold Lake carbon capture project will be running before 2030](#)
CBC - Apr 28, 2023



DETAILS

<ul style="list-style-type: none"> 450 - 11,058 SF (Mall) 503 (Building 2) 2,500 - 5,500 SF (New Pad - Building 6) 	<ul style="list-style-type: none"> CAM: \$12.95 PSF & TAX:\$2.50 PSF est. (Interior Mall) CAM: \$5.25 PSF & TAX: \$5.00 PSF est. (Exterior Mall)
<ul style="list-style-type: none"> New 7,780 SF Pad with Drive-Thru (Building 5) - 100% LEASED 	<ul style="list-style-type: none"> Includes 15% Mgt. Admin Fee
<ul style="list-style-type: none"> Hwy 28: 4,940 VPD 	<ul style="list-style-type: none"> Contact Listing Agents for Rates

AREA TENANTS



DEMOGRAPHICS

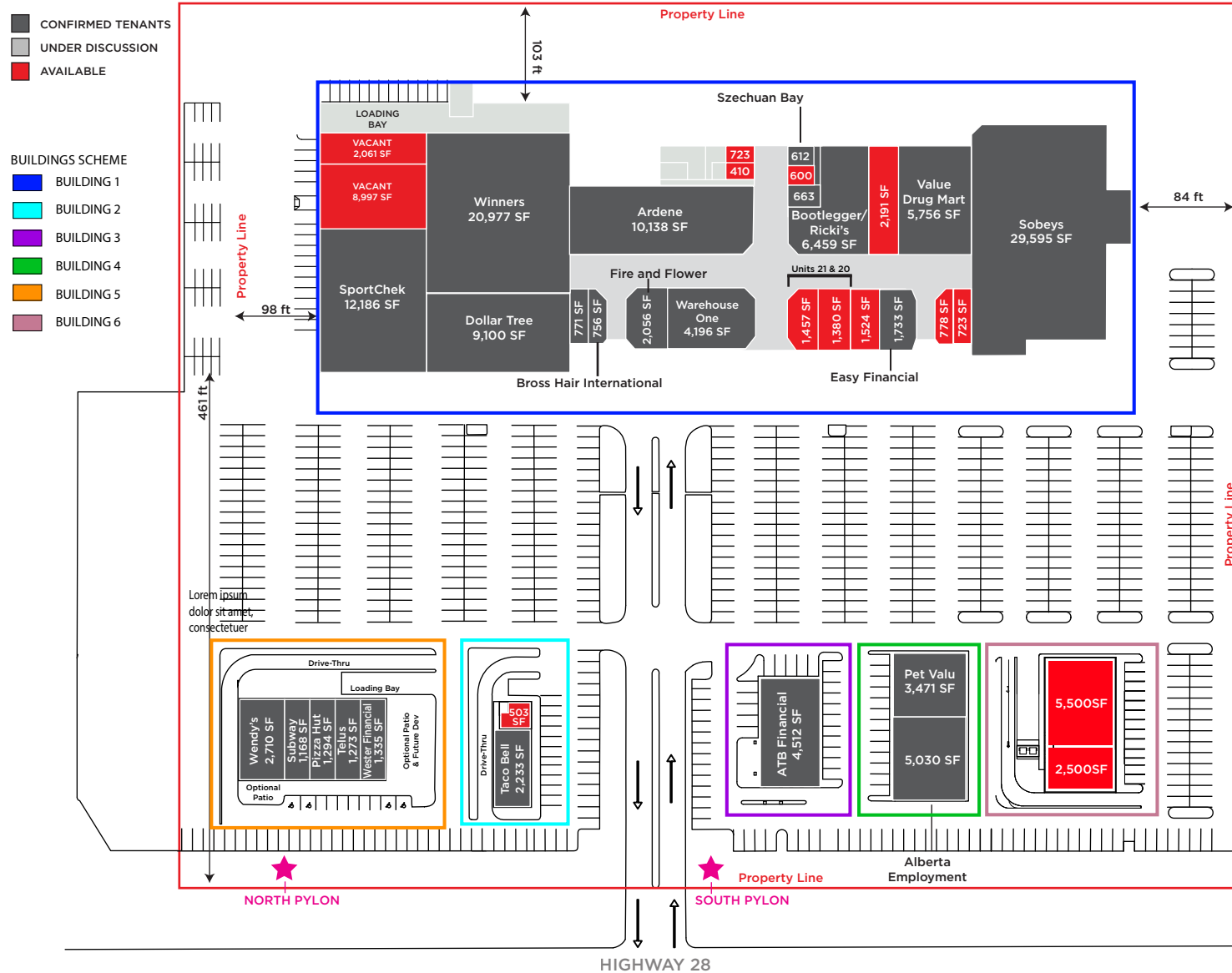
	TRADE AREA	5KM	10KM	50KM
2023 Population	80,047	16,286	17,869	37,673
2028 Population	81,307	17,157	19,064	39,292
2023 Average HH Income	\$112,945	\$125,020	\$127,722	\$123,923

CONTACT

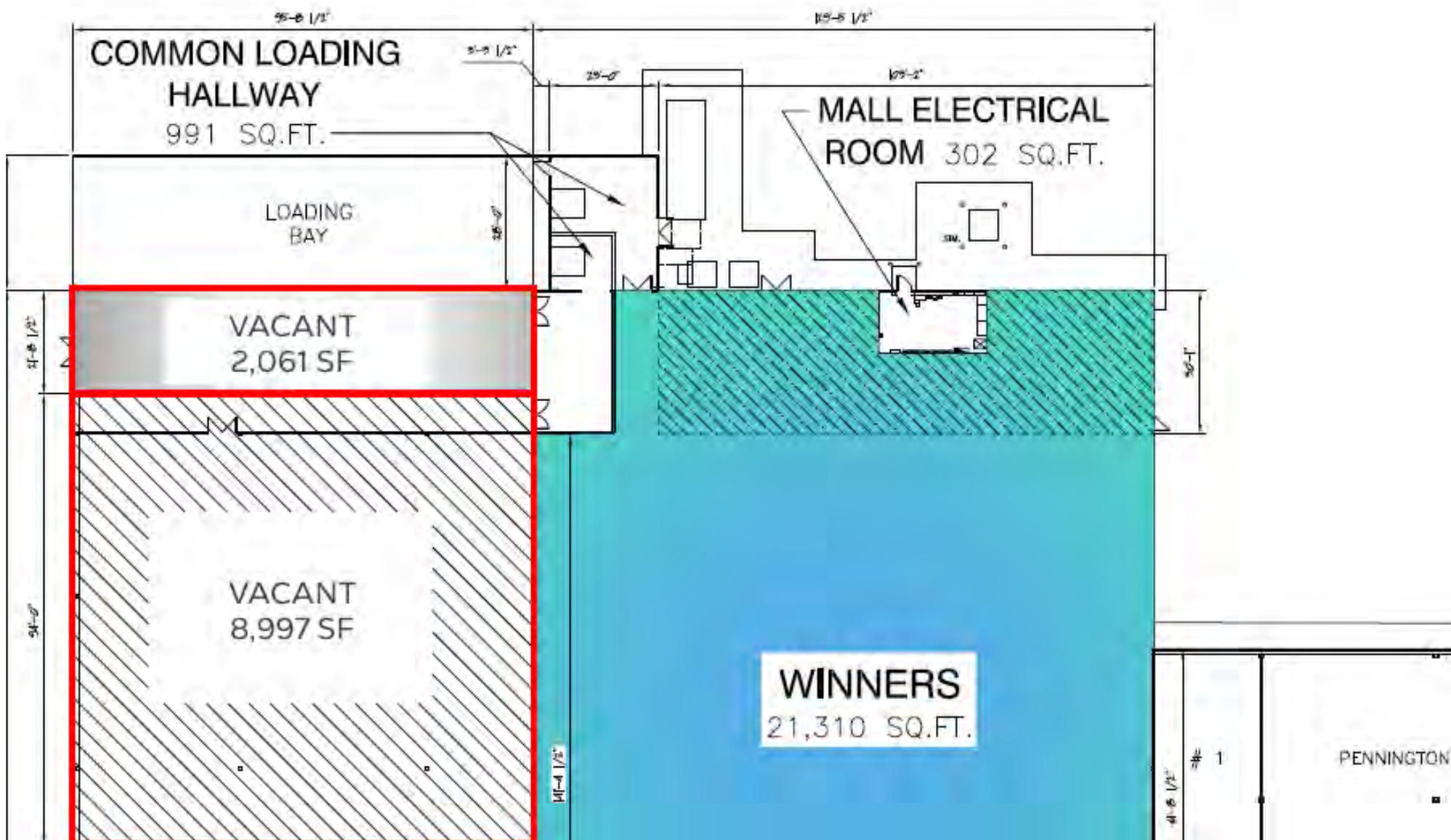
DAN CLARK
 Personal Real Estate Corporation
 Sitings Realty Ltd
 604.628.2577
 dan@sitings.ca

BRANDON SIBAL
 Vice President
 Sitings Realty Ltd
 604.628.2582
 brandon@sitings.ca

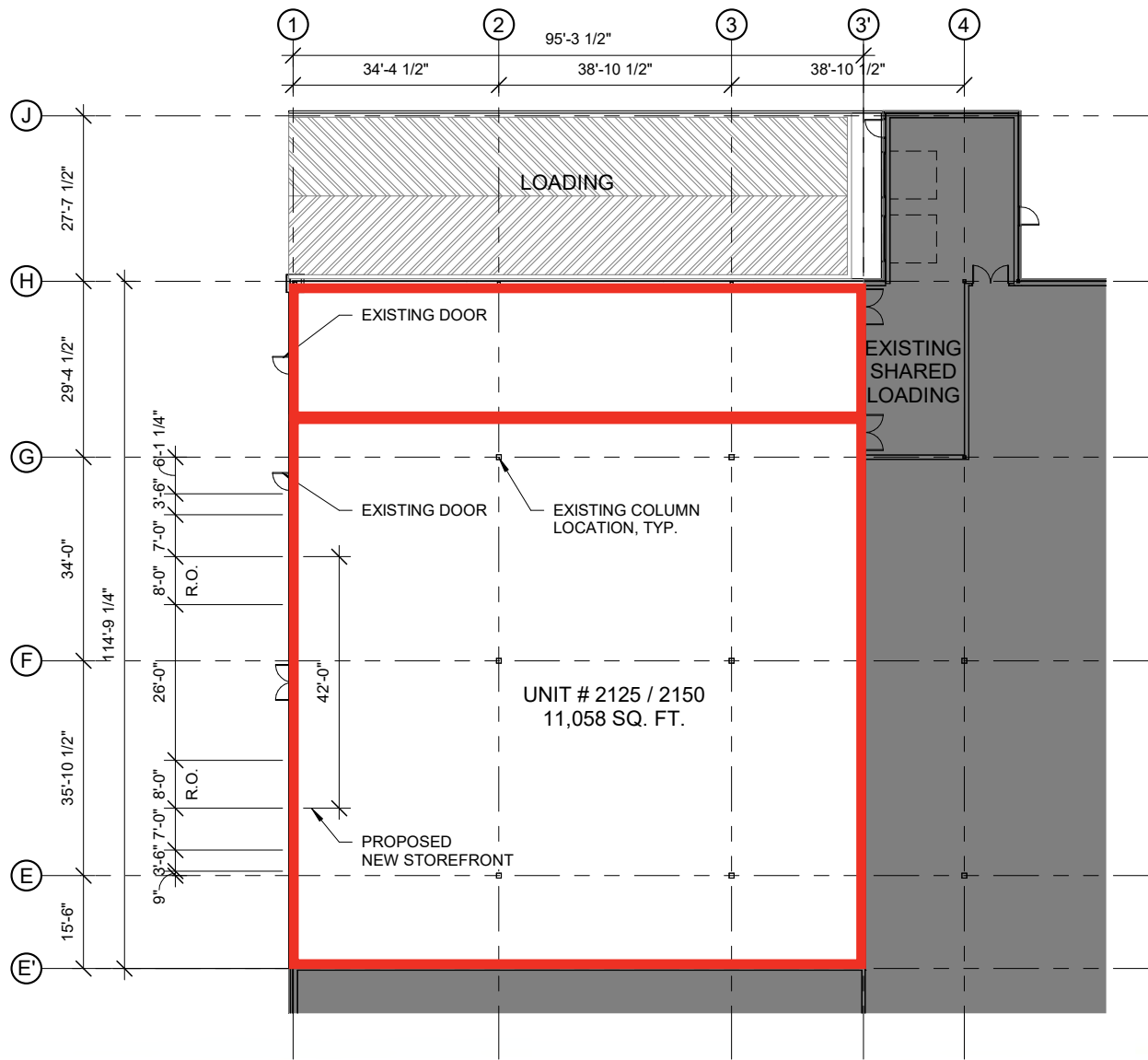
SITE PLAN



BUILDING 1 - UNITS 2125/2150 FLOOR PLAN



BUILDING 1 - UNITS 2125/2150 FLOOR PLAN

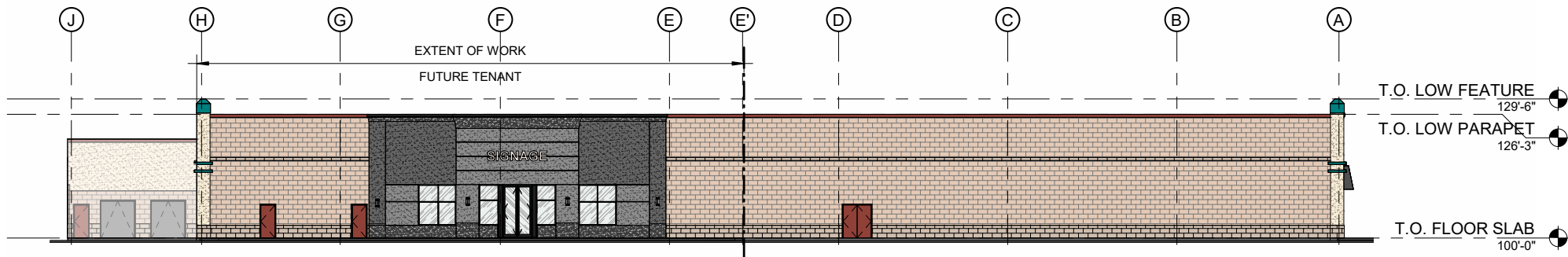


1 ENLARGED MAIN FLOOR PLAN
D SCALE: 1" = 20'-0"



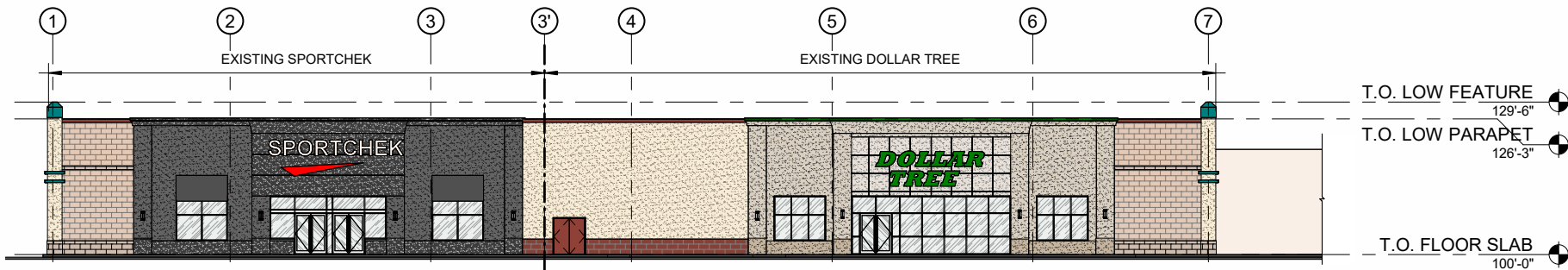
2024/02/28

BUILDING 1 - ELEVATIONS



NOTE: TENANT SIGNAGE BY TENANT - NOT BY LANDLORD

1 NORTH ELEVATION
E SCALE: 1" = 20'-0"



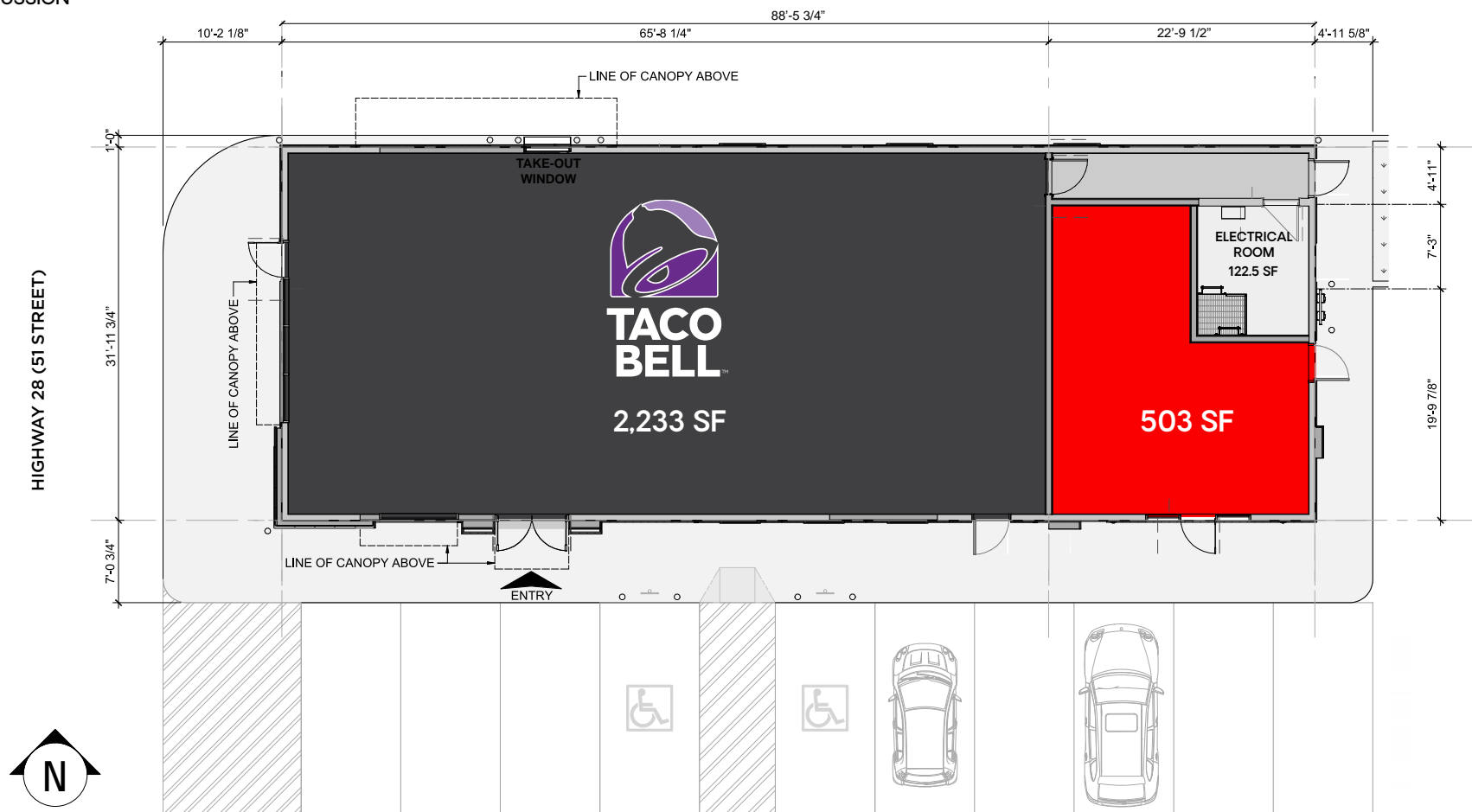
2 EXISTING WEST ELEVATION
E SCALE: 1" = 20'-0"

E

2024/02/28

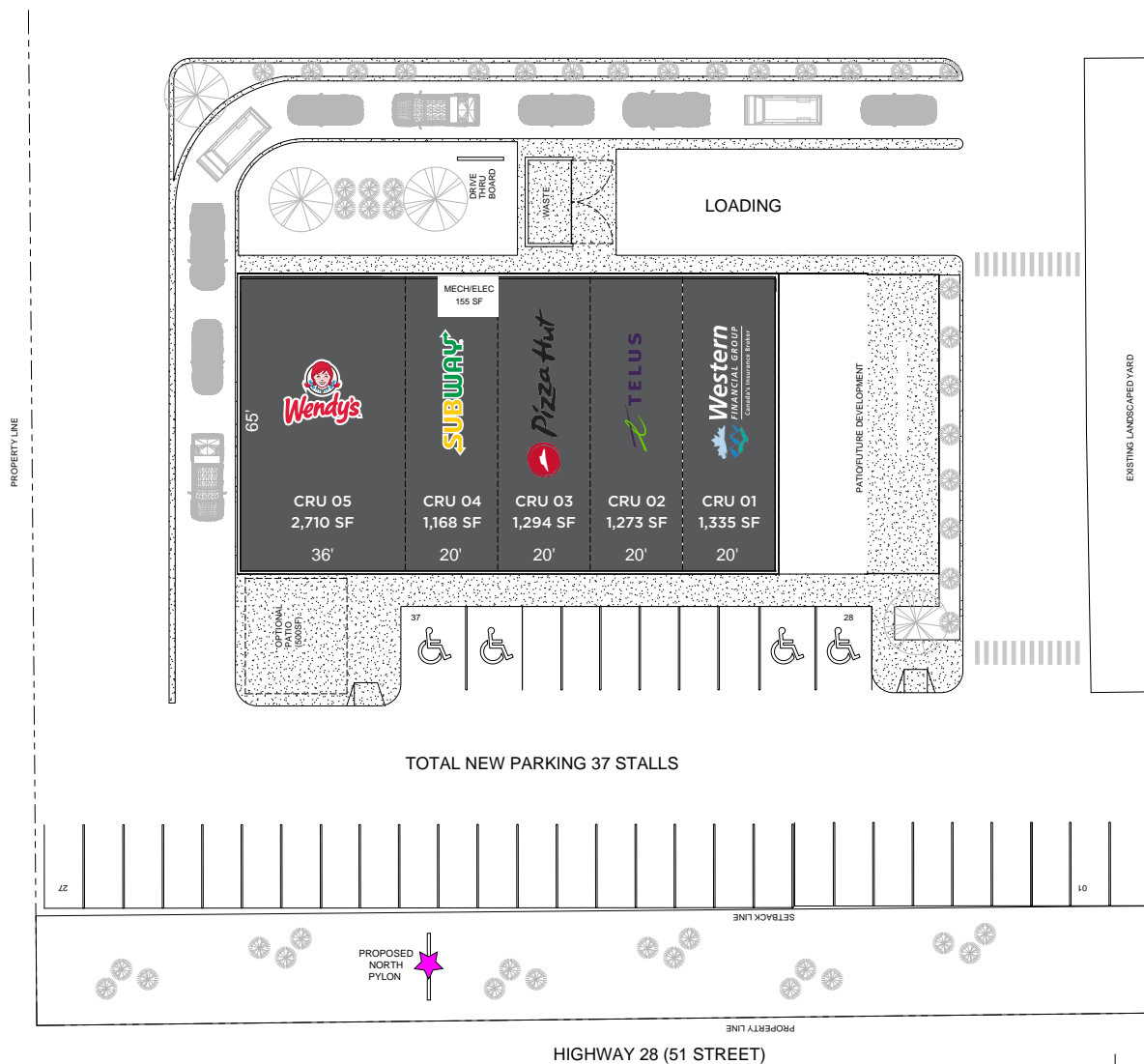
BUILDING 2

- CONFIRMED TENANT
- UNDER DISCUSSION
- AVAILABLE



NEW PAD PLAN - BUILDING 5

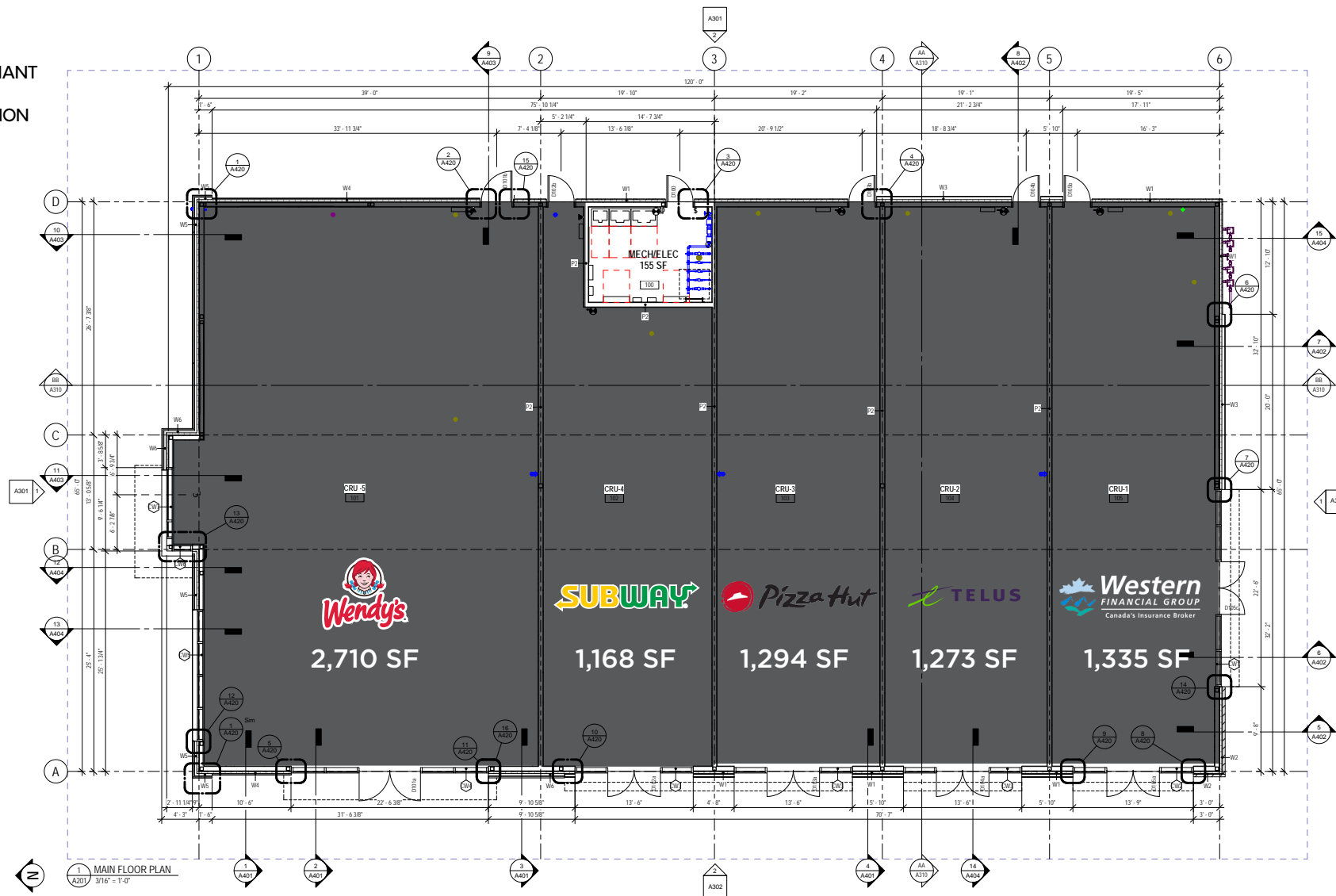
- CONFIRMED TENANT
- UNDER DISCUSSION
- AVAILABLE



This document/email has been prepared by Sitings Realty Ltd. for advertising and general information only. Although information contained herein is from sources we believe reliable, Sitings Realty Ltd. makes no guarantees, representations or warranties of any kind, expressed or implied, regarding the information including, but not limited to, warranties of content, accuracy and reliability. This document/email is subject to errors and omissions and any interested party should undertake their own inquiries as to the accuracy of the information. Sitings Realty Ltd. excludes unequivocally all inferred or implied terms, conditions and warranties arising out of this document and excludes all liability for loss and damages arising there from. All areas, measurements and dimension herein are approximate, interested parties/tenant are to verify measurements if important to them. This document/email is not an inducement representation.

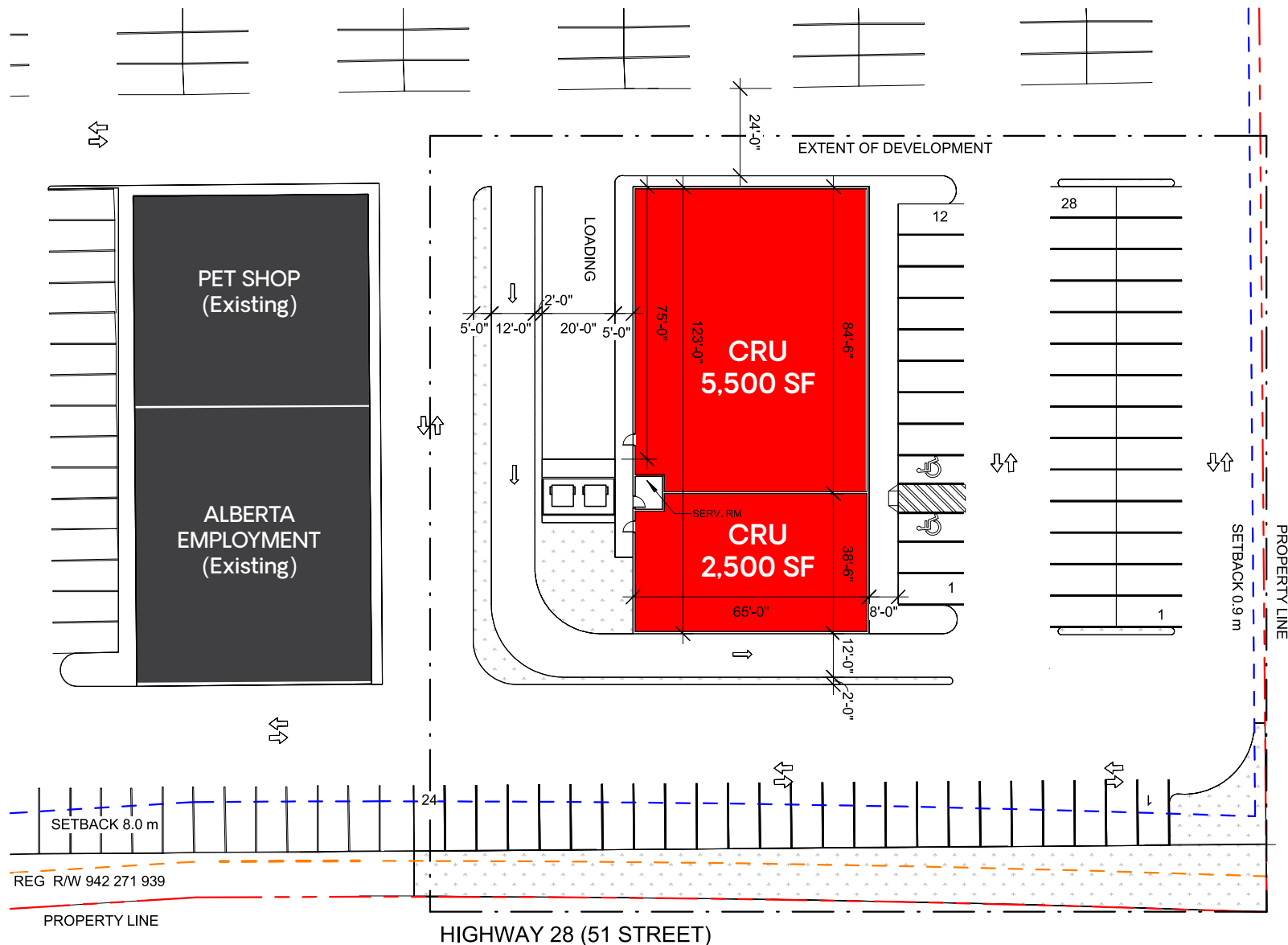
NEW PAD PLAN - BUILDING 5

- CONFIRMED TENANT
- UNDER DISCUSSION
- AVAILABLE



NEW PAD PLAN - BUILDING 6

- CONFIRMED TENANT
- UNDER DISCUSSION
- AVAILABLE



JOIN WENDY'S, SUBWAY, AND PIZZA HUT, & TACO BELL



NEW PAD - BUILDING 6



NEW PAD - BUILDING 6



TRI-CITY MALL

Cold Lake, AB



This document/email has been prepared by Sitings Realty Ltd. for advertising and general information only. Although information contained herein is from sources we believe reliable, Sitings Realty Ltd. makes no guarantees, representations or warranties of any kind, expressed or implied, regarding the information including, but not limited to, warranties of content, accuracy and reliability. This document/email is subject to errors and omissions and any interested party should undertake their own inquiries as to the accuracy of the information. Sitings Realty Ltd. excludes unequivocally all inferred or implied terms, conditions and warranties arising out of this document and excludes all liability for loss and damages arising there from. All areas, measurements and dimension herein are approximate, interested parties/tenant are to verify measurements if important to them. This document/email is not an inducement representation.



SITINGS.CA
604.684.6767

PYLON SIGNAGE

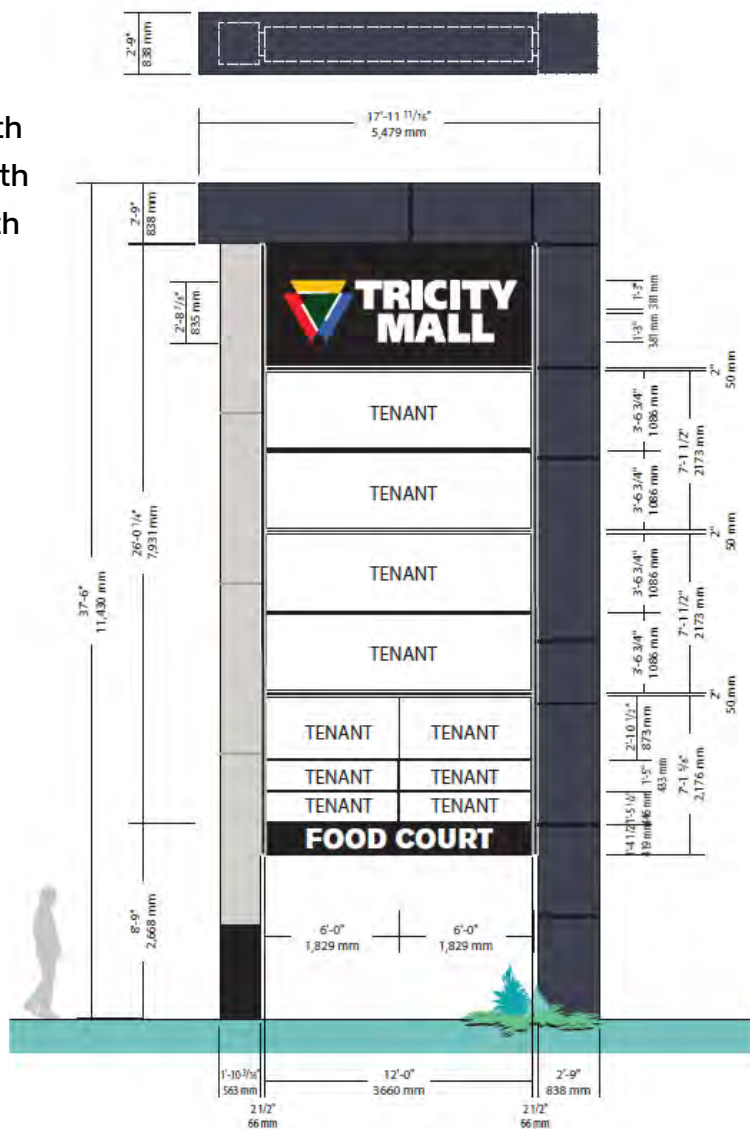
PYLON RATES

Large Panel: \$425.00/month

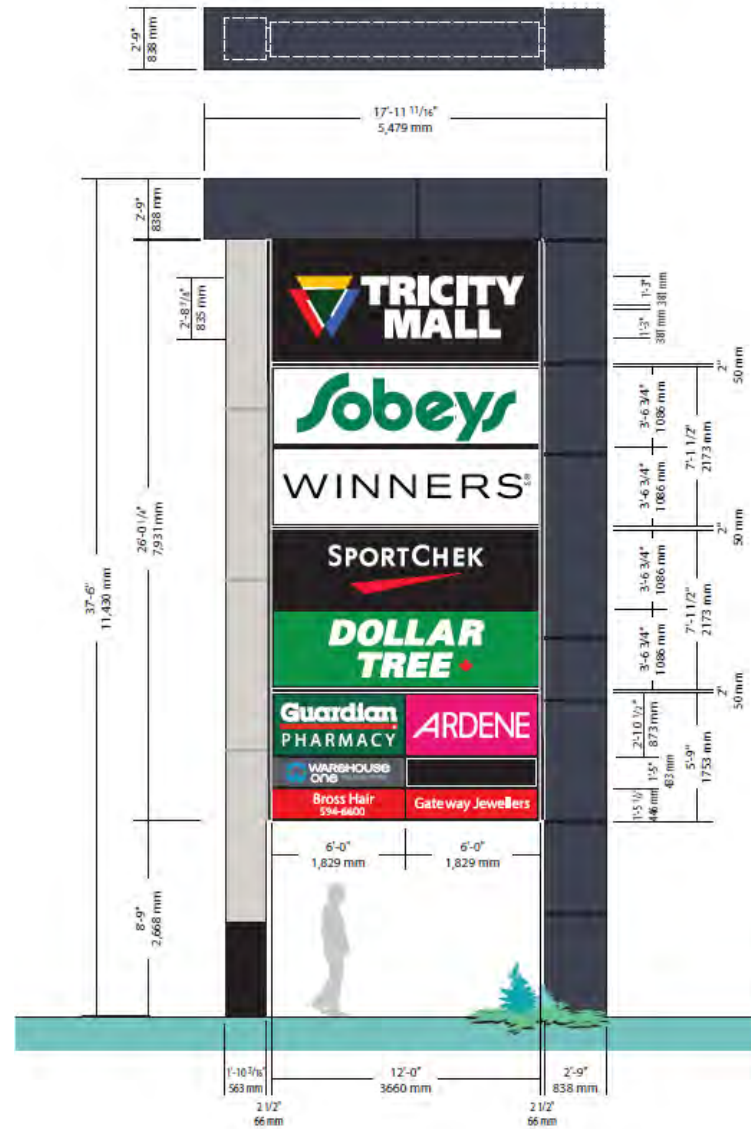
Medium Panel: \$300.00/month

Small Panel: \$125.00/month

NORTH PYLON

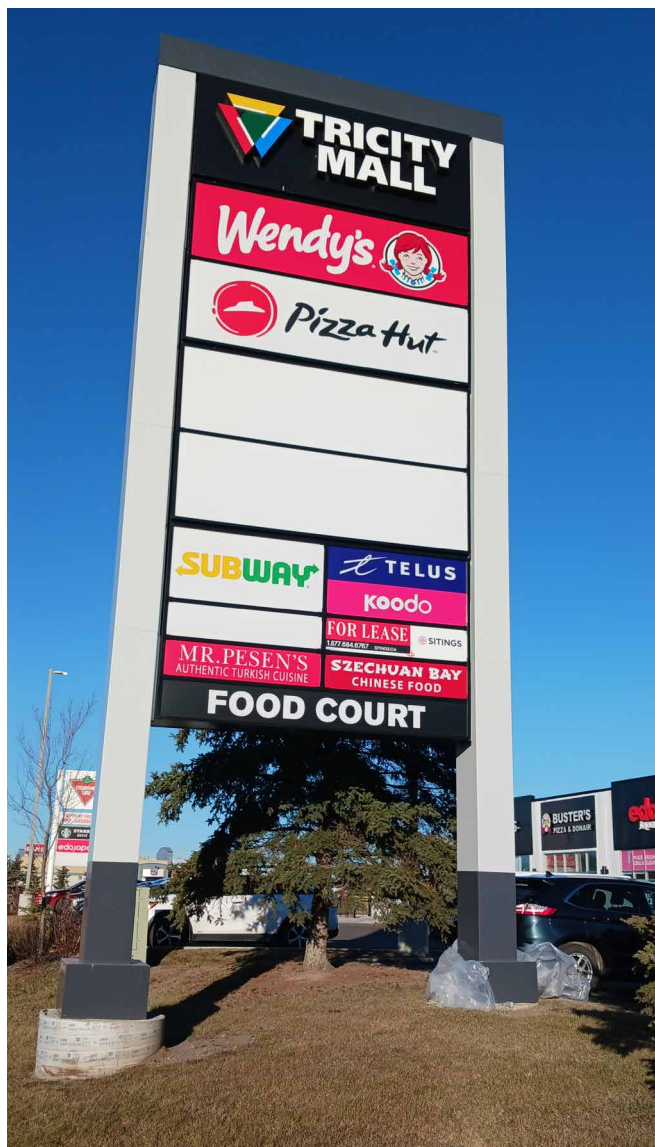


SOUTH PYLON

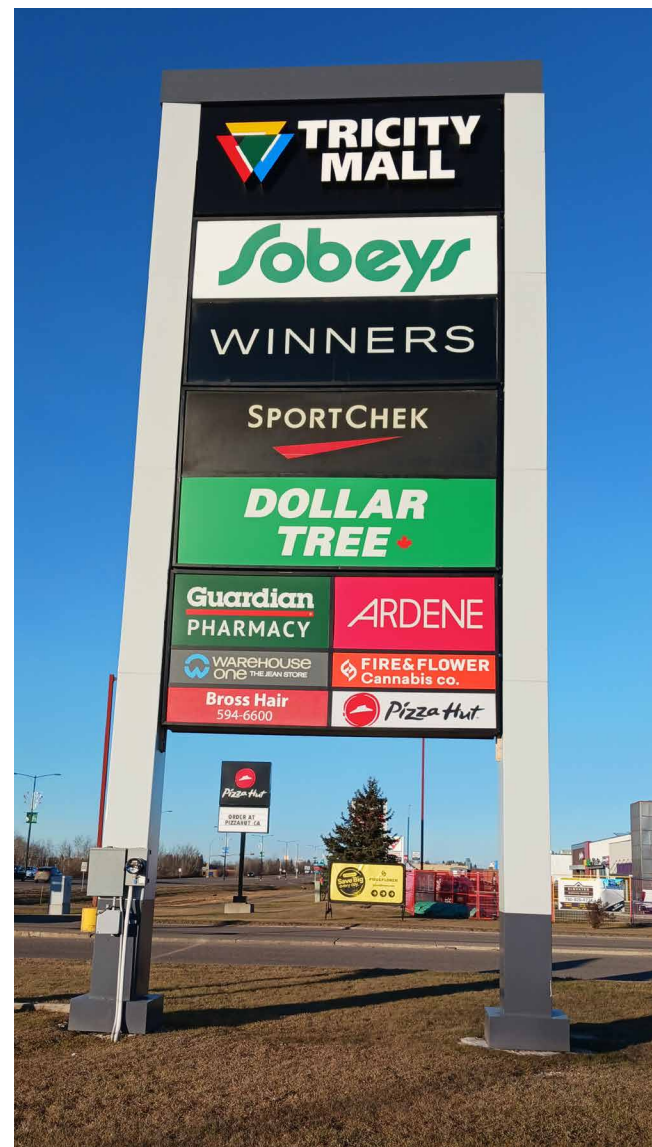


PYLON SIGNAGE

NORTH PYLON



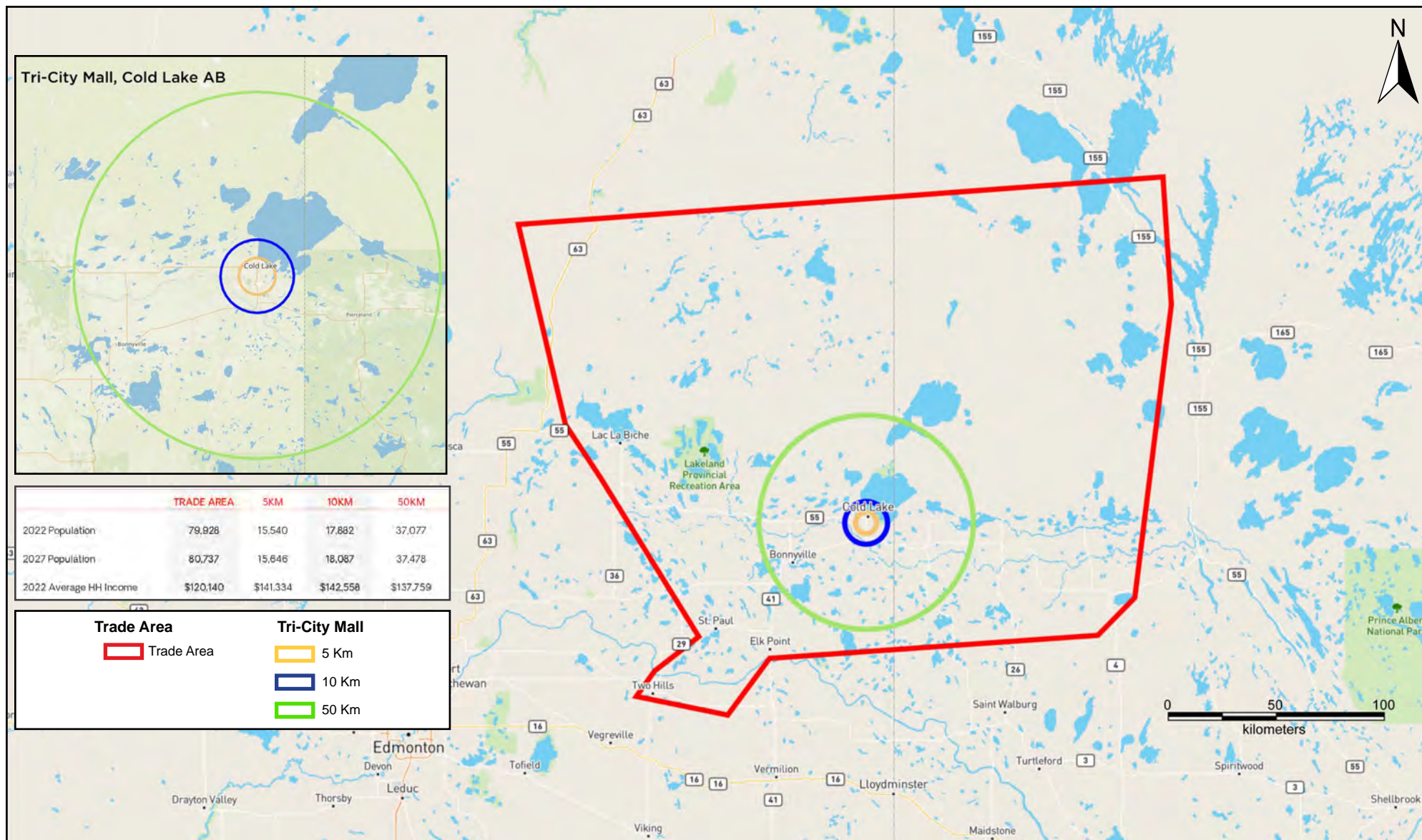
SOUTH PYLON



AERIAL



DEMOGRAPHICS



This document/email has been prepared by Sitings Realty Ltd. for advertising and general information only. Although information contained herein is from sources we believe reliable, Sitings Realty Ltd. makes no guarantees, representations or warranties of any kind, expressed or implied, regarding the information including, but not limited to, warranties of content, accuracy and reliability. This document/email is subject to errors and omissions and any interested party should undertake their own inquiries as to the accuracy of the information. Sitings Realty Ltd. excludes unequivocally all inferred or implied terms, conditions and warranties arising out of this document and excludes all liability for loss and damages arising there from. All areas, measurements and dimension herein are approximate, interested parties/tenant are to verify measurements if important to them. This document/email is not an inducement representation.