

NEW WEST STATION

800 Carnarvon Street,
New Westminster, BC

SUMMARY

The Shops at New Westminster is a busy transit oriented shopping centre in the heart of a dense residential community

Averaging over 30,000 boardings and exits per day, the New Westminster SkyTrain station is consistently among the top ten busiest stations in the SkyTrain System.

Anchor Tenants include Safeway, Landmark Cinemas, Shoppers Drug Mart, and banks, gyms, and restaurants. The project has over 200,000 sf of commercial space, drawing significant traffic to the centre. Douglas College is 100M away, with approximately 12,000 students.

The subject unit is on the main level of the shopping centre, directly across from the front door of the Safeway Grocery Store.

High quality fixtures are in place, including washrooms, a kitchenette, flooring, and lighting.

DETAILS

- + 1,580 SF of improved space
- + Transit and bus connection with over 30,000 passenger boardings and exits per day
- + Almost 20,000 people live within 1 KM of the site

CONTACT

Nick Fisher
604.628.2581
nick@sitings.ca



TRANSIT ORIENTED DEVELOPMENT & HIGH FOOT TRAFFIC



DEMOGRAPHICS

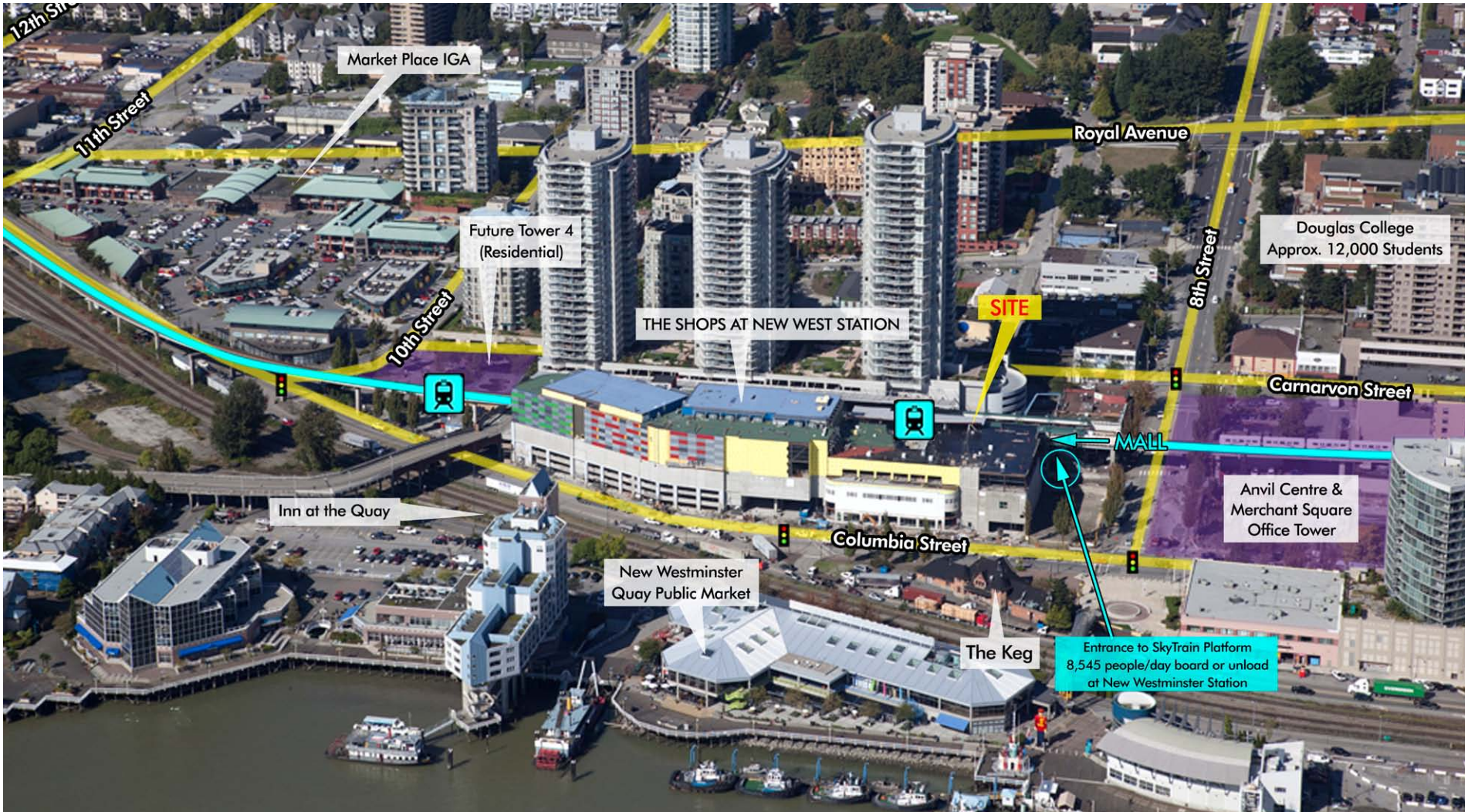
	1 KM	3 KM	5 KM	Trade Area
2016 Population	19,867	82,083	213,967	217,252
2011 Population	18,733	77,025	200,484	204,808
2016 Avg HH Income	\$78,420	\$83,426	\$85,214	\$79,343
2016 Daytime Population	18,488	68,491	170,521	186,308

AREA TENANTS



NEW WEST STATION

New Westminster, BC



Notable traffic generators in the neighborhood:

- New 140,000 SF office complex
- New Civic/Conference & Performing Arts Centre nearing completion across the street

604.684.6767 / SITINGS.CA

1595 - 650 West Georgia Street, Vancouver, BC V6B 4N8

E&OE: All information contained herein is from sources we deem reliable, and we have no reason to doubt its accuracy; however, no guarantee of responsibility is assumed hereof and it shall not form any part of future contracts. Properties are submitted subject to errors and omissions and all information should be carefully verified. *All measurements quoted herein are approximate.

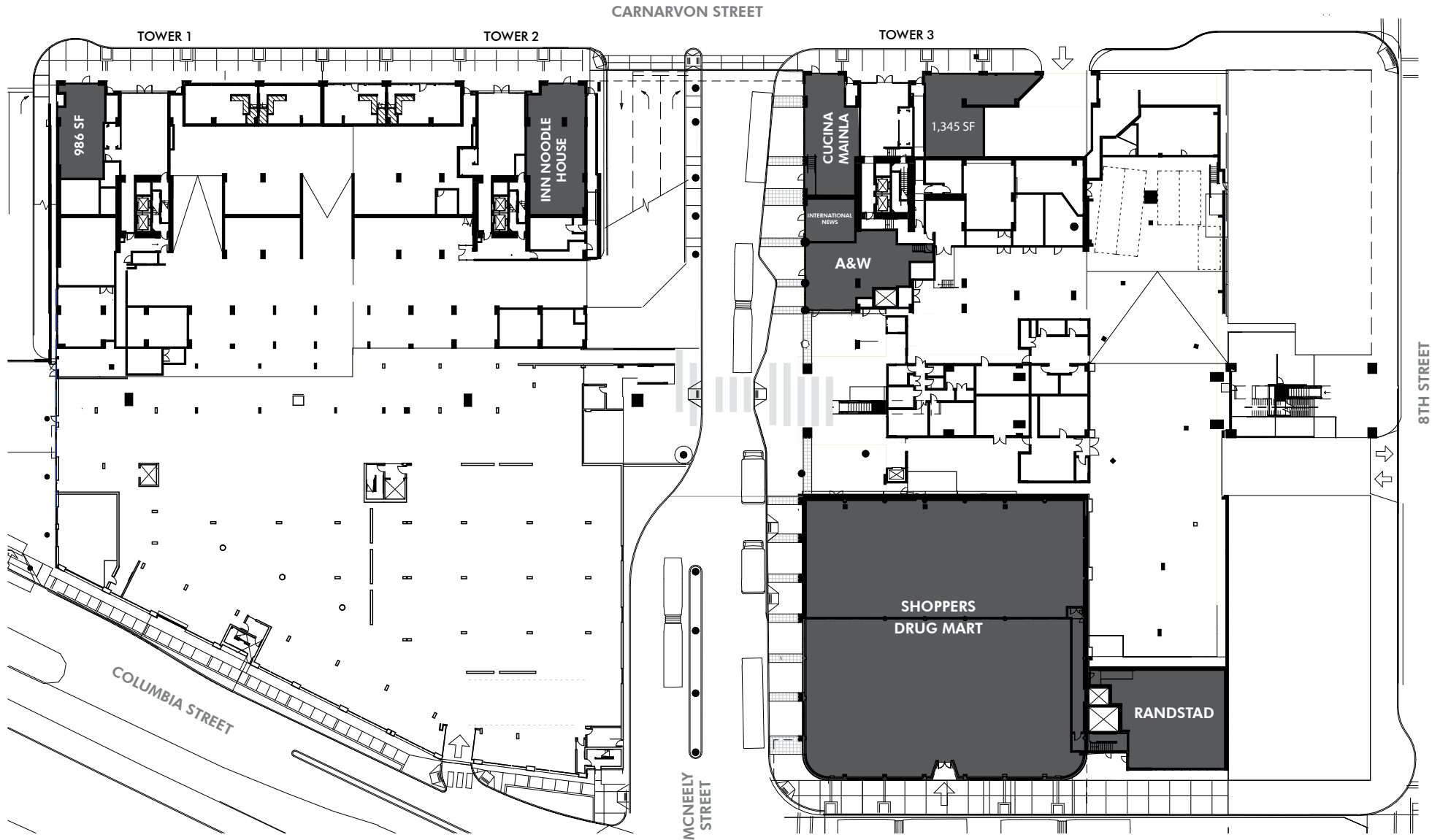
 **SITINGS**

 **X TEAM**
INTERNATIONAL

NEW WEST STATION

New Westminster, BC

FIRST FLOOR



604.684.6767 / SITINGS.CA

1595 - 650 West Georgia Street, Vancouver, BC V6B 4N8

E&OE: All information contained herein is from sources we deem reliable, and we have no reason to doubt its accuracy; however, no guarantee or responsibility is assumed hereof and it shall not form any part of future contracts. Properties are submitted subject to error and omission and all information should be carefully verified. *All measurements quoted herein are approximate.

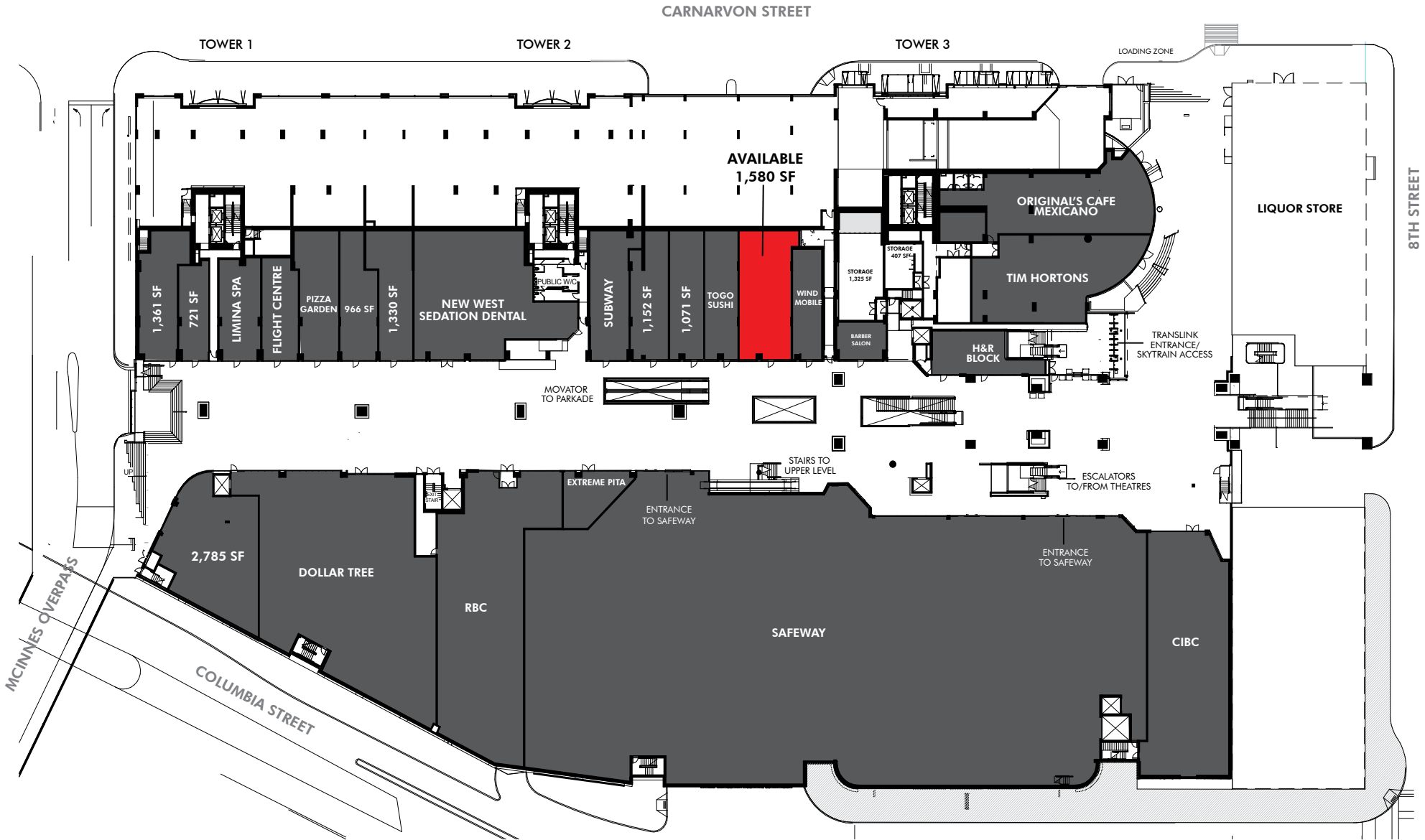
 **SITINGS**

 **X TEAM**
INTERNATIONAL

NEW WEST STATION

New Westminster, BC

MAIN FLOOR



604.684.6767 / SITINGS.CA

1595 - 650 West Georgia Street, Vancouver, BC V6B 4N8

E&OE: All information contained herein is from sources we deem reliable, and we have no reason to doubt its accuracy; however, no guarantee or responsibility is assumed hereof and it shall not form any part of future contracts. Properties are submitted subject to error and omission and all information should be carefully verified. *All measurements quoted herein are approximate.



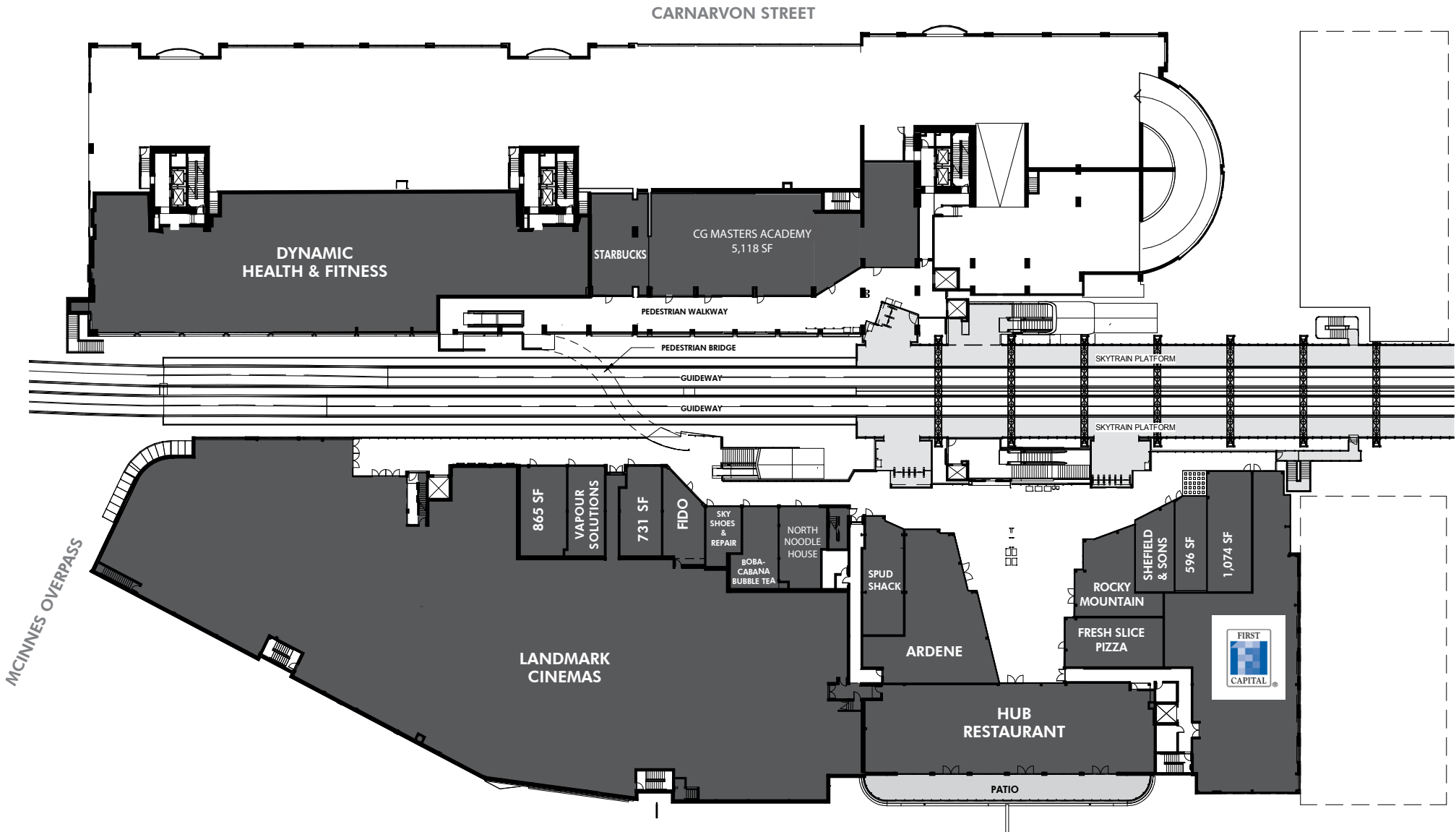
SITINGS



NEW WEST STATION

New Westminster, BC

UPPER FLOOR



604.684.6767 / SITINGS.CA

1595 - 650 West Georgia Street, Vancouver, BC V6B 4N8

E&OE: All information contained herein is from sources we deem reliable, and we have no reason to doubt its accuracy; however, no guarantee of responsibility is assumed hereof and it shall not form any part of future contracts. Properties are submitted subject to errors and omissions and all information should be carefully verified. *All measurements quoted herein are approximate.

 **SITINGS**

 **XTEAM**
INTERNATIONAL

NEW WEST STATION

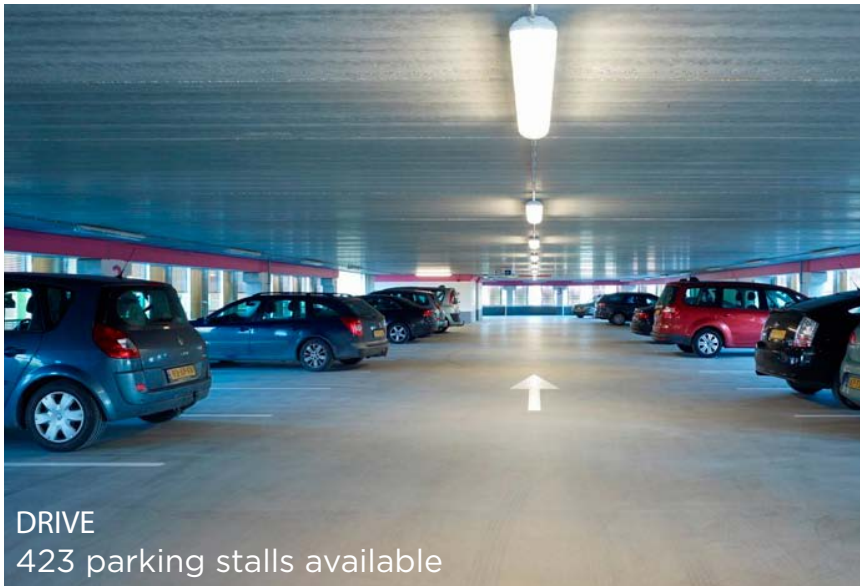
New Westminster, BC



SKYTRAIN
250,000 people pass through this station each day



BUS
Major bus hub/exchange served by 7 bus lines



DRIVE
423 parking stalls available



WALK
Douglas College: 10,000 students & 1,200 employees
New West City Hall: 950 employees
Inn at the Quay: 126 hotel rooms

604.684.6767 / SITINGS.CA

1595 - 650 West Georgia Street, Vancouver, BC V6B 4N8

E&OE: All information contained herein is from sources we deem reliable, and we have no reason to doubt its accuracy; however, no guarantee or responsibility is assumed hereof and it shall not form any part of future contracts. Properties are submitted subject to error and omission and all information should be carefully verified. *All measurements quoted herein are approximate.

 **SITINGS**

 **X TEAM**
INTERNATIONAL