



FOR LEASE

TRAIL BAY CENTRE

5755 Cowrie Street
Sechelt, BC



SITINGS REALTY LTD.
SITINGS.CA / 604.684.6767
1595 – 650 West Georgia Street
Vancouver, BC V6B 4N8

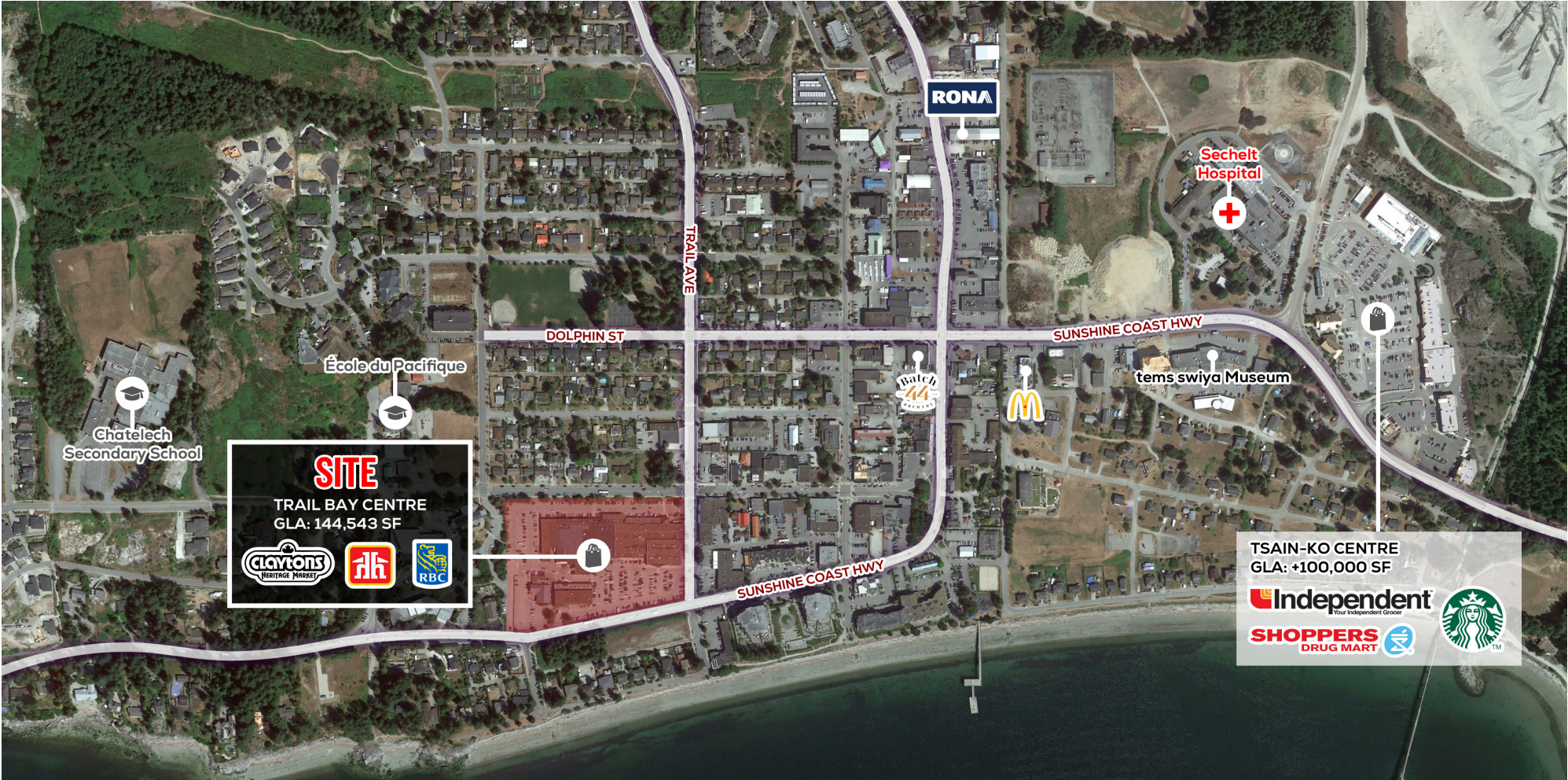
NAI COMMERCIAL
NAICOMMERCIAL.CA / 604.638.7535
1300 – 1075 West Georgia Street
Vancouver, BC V6E 3C9

SHELDON SCOTT
Personal Real Estate Corporation
604.788.1225
sheldon@sittings.ca

BRIAN MACKENZIE
Vice President, Leasing & Sales
604.691.6618
bmackenzie@naicommercial.ca

LOCATION

Trail Bay Centre is situated in a prime location in the heart of Sechelt, along the Sunshine Coast Highway. Sechelt is located at the core of Shishalh Nation Lands, serving as the central hub of the Sunshine Coast, attracting both locals and visitors from the surrounding areas for all their necessities. The District of Sechelt is located on the Sunshine Coast, approximately 50 km northwest of Vancouver. Accessible through a scenic 40-minute ferry ride from Horseshoe Bay or a convenient 20-minute flight from Downtown Vancouver, the region is well-known for its beautiful parks, oceans & lakes, and beaches offering a variety of outdoor recreation activities.



This document/email has been prepared by Sitings Realty Ltd. for advertising and general information only. Although information contained herein is from sources we believe reliable, Sitings Realty Ltd. makes no guarantees, representations or warranties of any kind, expressed or implied, regarding the information including, but not limited to, warranties of content, accuracy and reliability. This document/email is subject to errors and omissions and any interested party should undertake their own inquiries as to the accuracy of the information. Sitings Realty Ltd. excludes unequivocally all inferred or implied terms, conditions and warranties arising out of this document and excludes all liability for loss and damages arising there from. All areas, measurements and dimension herein are approximate, interested parties/tenant are to verify measurements if important to them. This document/email is not an inducement representation.

PROJECT SUMMARY

The project is strategically located on the southeast corner of Trail Avenue and Cowrie Street, the heart of Sechelt's Town Centre. Trail Bay Centre encompasses over 60 stores, shops, and restaurants and it is anchored by Clayton's Heritage Market, a Liquor Store, Rx Drug Mart, Royal Bank, Home Hardware, Westland Insurance, and many others.

- Prime location in the Heart of Sechelt
- Easy access and exposure to the Sunshine Coast Highway (Teredo Street)
- Anchored by Clayton's Heritage Market
- Over 144,000 square feet of retail space



RETAIL UNITS
FOR LEASE

This document/email has been prepared by Sitings Realty Ltd. for advertising and general information only. Although information contained herein is from sources we believe reliable, Sitings Realty Ltd. makes no guarantees, representations or warranties of any kind, expressed or implied, regarding the information including, but not limited to, warranties of content, accuracy and reliability. This document/email is subject to errors and omissions and any interested party should undertake their own inquiries as to the accuracy of the information. Sitings Realty Ltd. excludes unequivocally all inferred or implied terms, conditions and warranties arising out of this document and excludes all liability for loss and damages arising there from. All areas, measurements and dimension herein are approximate, interested parties/tenant are to verify measurements if important to them. This document/email is not an inducement representation.

DETAILS

- ✦ Available:
 - Tenant 1: 10,000 SF
 - Tenant 2: 4,330 SF
 - Unit 8: 618 SF
 - Unit 15: 2,107 SF
 - Unit 16: 1,140 SF
 - Unit 55: 656 SF

✦ Base Rent: Please Contact Listing Agents

✦ Additional Rent:

- ✦ Interior Units: \$9.60 PSF (2025 est.)
- ✦ Exterior Units: \$8.10 PSF (2025 est.)

Note: A Promotion Fund is also applicable at the Shopping Centre.

✦ Excellent Exposure to the Sunshine Coast Hwy (Teredo St), Cowrie St, and Trail Ave

✦ Parking: 541 Total Surface Stalls

- ✦ 429 Stalls (Mall & Royal Bank Building)
- ✦ 35 Stalls (Bayside Building)
- ✦ 16 Stalls (ES Clayton Building)
- ✦ 61 Stalls (Leeuwin Properties Building)

✦ Prominent Signage Available

MALL TENANTS



DEMOGRAPHICS

	5 MIN	10 MIN	15 MIN
2024 Population	7,123	10,965	15,935
2027 Population Projection	7,285	11,200	16,252
2024 Daytime Population	8,274	11,125	14,109
2024 Average Household Income	\$104,061	\$106,218	\$108,490

CONTACT

SHELDON SCOTT

Personal Real Estate Corporation
Sitings Realty Ltd

604.788.1225
sheldon@sitings.ca

BRIAN MACKENZIE

Vice President, Leasing & Sales
NAI Commercial

604.691.6618
bmackenzie@naicommercial.ca

SITE PLAN

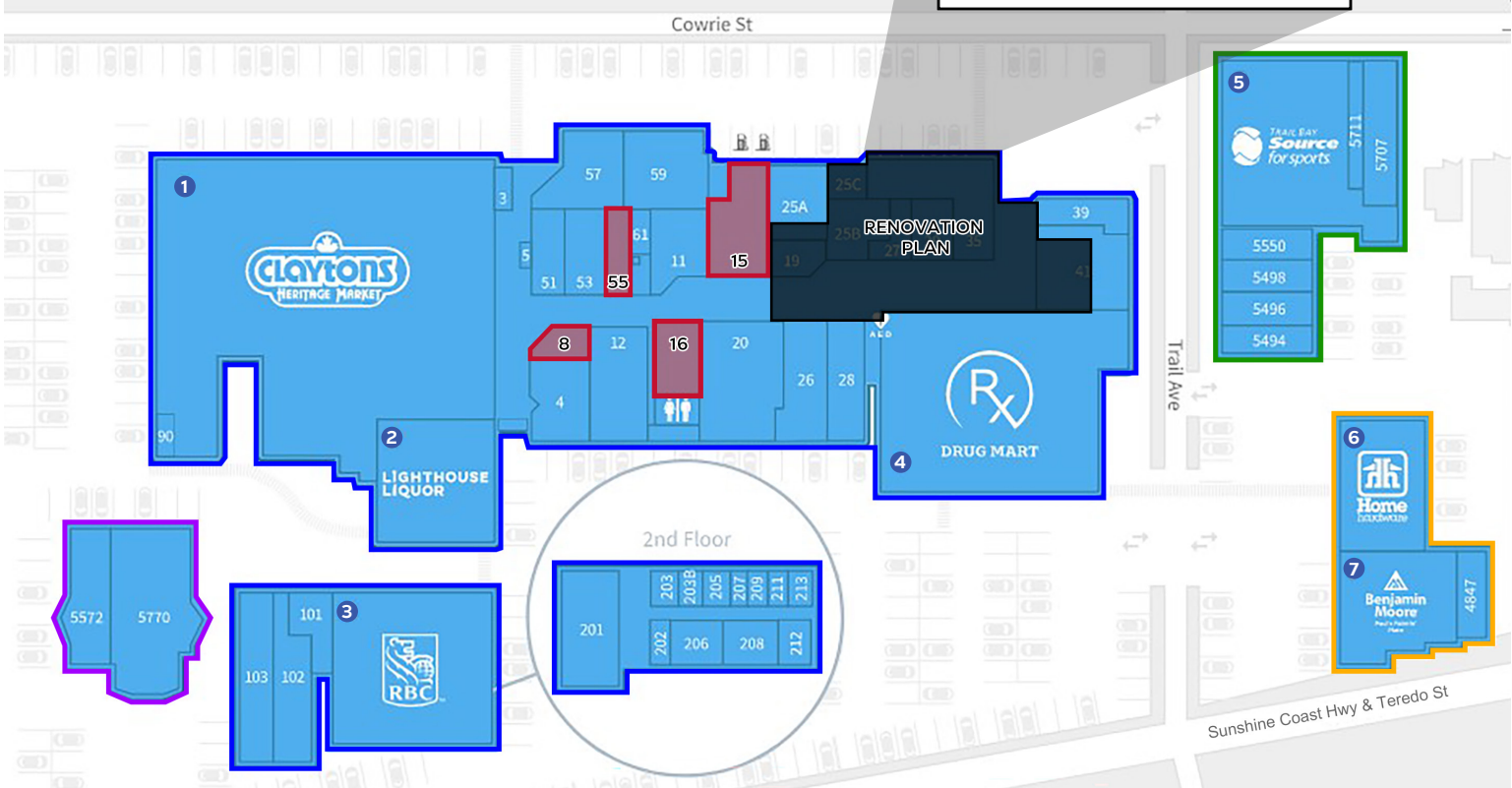
TENANT LEGEND

TRAIL BAY CENTRE

- 1 Clayton's Heritage Market
- 2 Lighthouse Liquor
- 3 RBC
- 4 Drug Mart
- 5 Source for Sports
- 6 Home Hardware
- 7 Benjamin Moore

- 3 Trail Bay Café
- 4 Gerogian Trading Company
- 5 Trail Bay Lotto Centre
- 8 Space Available
- 11 Upstairs Downstairs
- 12 Cactus Flower Fashion
- 15 Space Available
- 16 Space Available
- 19 Wakefield Jewellers Ltd.
- 20 Pet Valu
- 25A James & McIntyre CPA
- 25B Game Point
- 25C Charm & Gusto Graphic Design
- 26 Studio & Stationary Shop
- 26 Subway
- 27 Flying Saucers Tea & Coffee Emporium
- 28 Coast Flow Yoga
- 35 Westland Insurance
- 39 Juno
- 41 Great Canadian Dollar Store
- 55 Space Available
- 57 Sima Sushi
- 59 Saffro

- TRAIL BAY CENTRE
- ES CLAYTON BLDG
- LEEUWIN PROPERTIES BLDG
- BAYSIDE BLDG
- AVAILABLE



TRAIL BAY CENTRE 1ST FLOOR	
101	Shift Kitchen Tapas Bar
102	Pizza Hut
103	Wellington-Altus (Hollis Wealth)

TRAIL BAY CENTRE 2ND FLOOR	
201	Shift Kitchen Tapas Bar
202	Pizza Hut
203	Wellington-Altus (Hollis Wealth)
203B	Agnes Huang Law Corp
205	Pacific Counselling
206	District of Sechelt & Community Achieves
207	Nexus Facilitating & Coaching
208-213	RBC Dominion Securities

ES CLAYTON BLDG	
5494	Talewind Books
5496	Pastimes Toy Store
5498	Fresh from the Coast
5550	Ty's Bistro
5711	Fossellos
5707	Moorestock

BAY SIDE BLDG	
4847	Emerge Design

LEEUWIN PROPERTIES BLDG	
5570 & 5572	Twenty Two Taphouse

This document/email has been prepared by Sitings Realty Ltd. for advertising and general information only. Although information contained herein is from sources we believe reliable, Sitings Realty Ltd. makes no guarantees, representations or warranties of any kind, expressed or implied, regarding the information including, but not limited to, warranties of content, accuracy and reliability. This document/email is subject to errors and omissions and any interested party should undertake their own inquiries as to the accuracy of the information. Sitings Realty Ltd. excludes unequivocally all inferred or implied terms, conditions and warranties arising out of this document and excludes all liability for loss and damages arising there from. All areas, measurements and dimension herein are approximate, interested parties/tenant are to verify measurements if important to them. This document/email is not an inducement representation.

PHOTO GALLERY

