



Broadway & Alma Retail Opportunity



Project Summary

Introducing Broadway & Alma, a groundbreaking rental project nestled in Vancouver's coveted West Side, seamlessly blending the vibrant neighborhoods of Kitsilano and Point Grey, two of Vancouver's most affluent neighbourhoods. Also just a few minutes away from UBC, the site features 164 rental units and 5300 SF of retail space, forming an attractive hub for both residents and students in the surrounding areas.

- High average household income: \$172,573
- CRU 3 and 4 with venting capabilities
- 164 rental unit mixed use building
- Walk Score: 97
Transit Score: 70
- Double height retail units



This document/email has been prepared by Sitings Realty Ltd. for advertising and general information only. Although information contained herein is from sources we believe reliable, Sitings Realty Ltd. makes no guarantees, representations or warranties of any kind, expressed or implied, regarding the information including, but not limited to, warranties of content, accuracy and reliability. This document/email is subject to errors and omissions and any interested party should undertake their own inquiries as to the accuracy of the information. Sitings Realty Ltd. excludes unequivocally all inferred or implied terms, conditions and warranties arising out of this document and excludes all liability for loss and damages arising there from. All areas, measurements and dimension herein are approximate, interested parties/tenant are to verify measurements if important to them. This document/email is not an inducement representation.

Details

✦ Available Sizes:

- ✦ CRU 1: 2,270 SF
- ✦ CRU 2: 1,113 SF
- ✦ CRU 3: 1,400 SF
- ✦ CRU 4: 1,173 SF

✦ Additional Rent: \$22.00 PSF

✦ Basic Rent: Please contact agents

✦ Available: Q1 2025

✦ Parking: 13 commercial stalls

Area Tenants



Demographics

	1 KM	3 KM	5 KM
2024 Population	17,765	93,611	273,817
2029 Population Projection	18,869	99,280	293,843
2024 Daytime Population	13,634	75,368	295,059
2024 Average HH Income	\$172,573	\$177,321	\$146,679

Contact

BRANDON SIBAL

Vice President
Sitings Realty Ltd

604.625.2582
brandon@sitings.ca

STEFAN SAFRATA

Vice President
Marcus & Millichap

604.398.4352
Stefan.Safrata@marcusmillichap.com

Aerial

Neighbourhood

RESTAURANTS

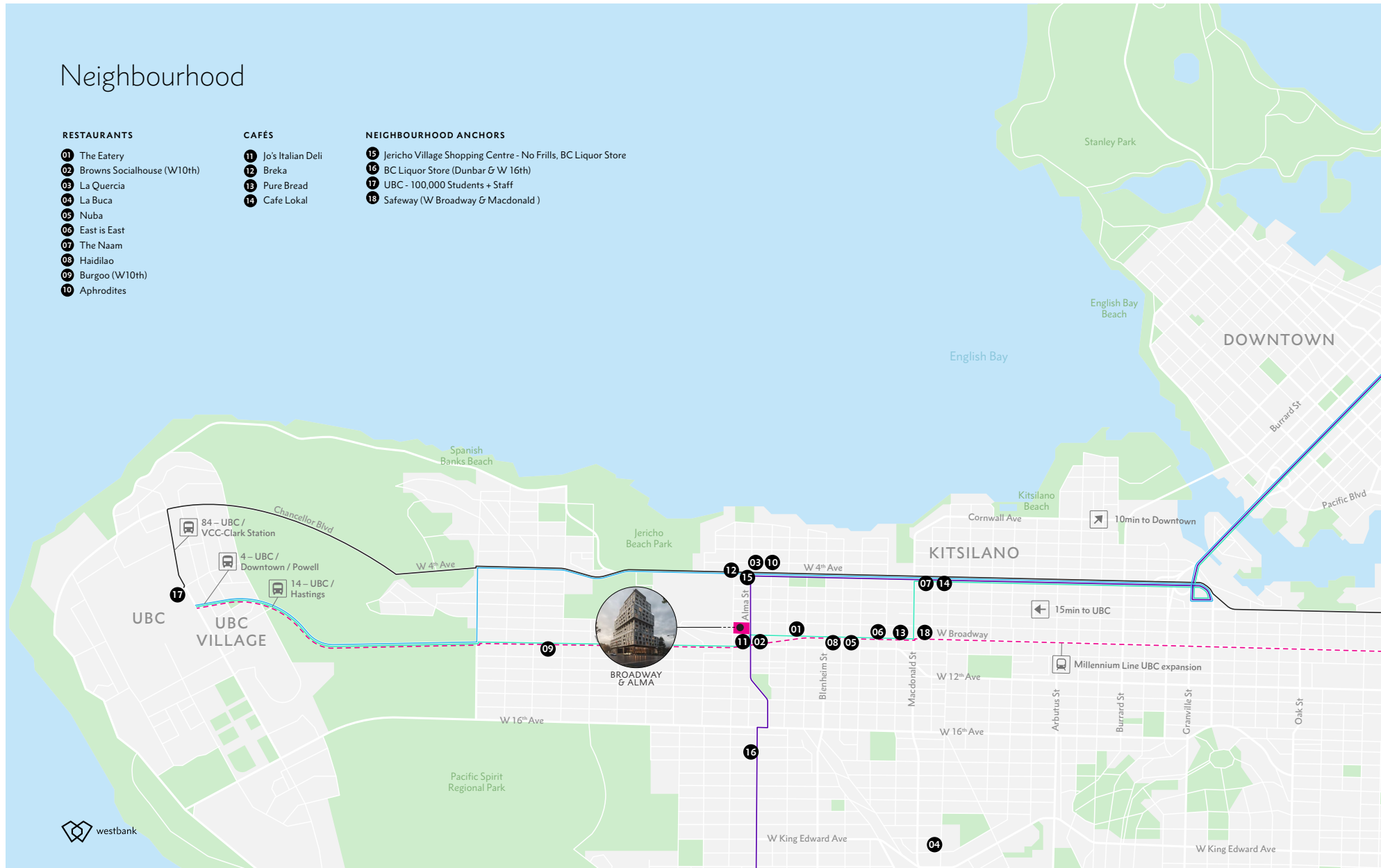
- 01 The Eatery
- 02 Browns Socialhouse (W10th)
- 03 La Quercia
- 04 La Buca
- 05 Nuba
- 06 East is East
- 07 The Naam
- 08 Haidilao
- 09 Burgoo (W10th)
- 10 Aphrodites

CAFÉS

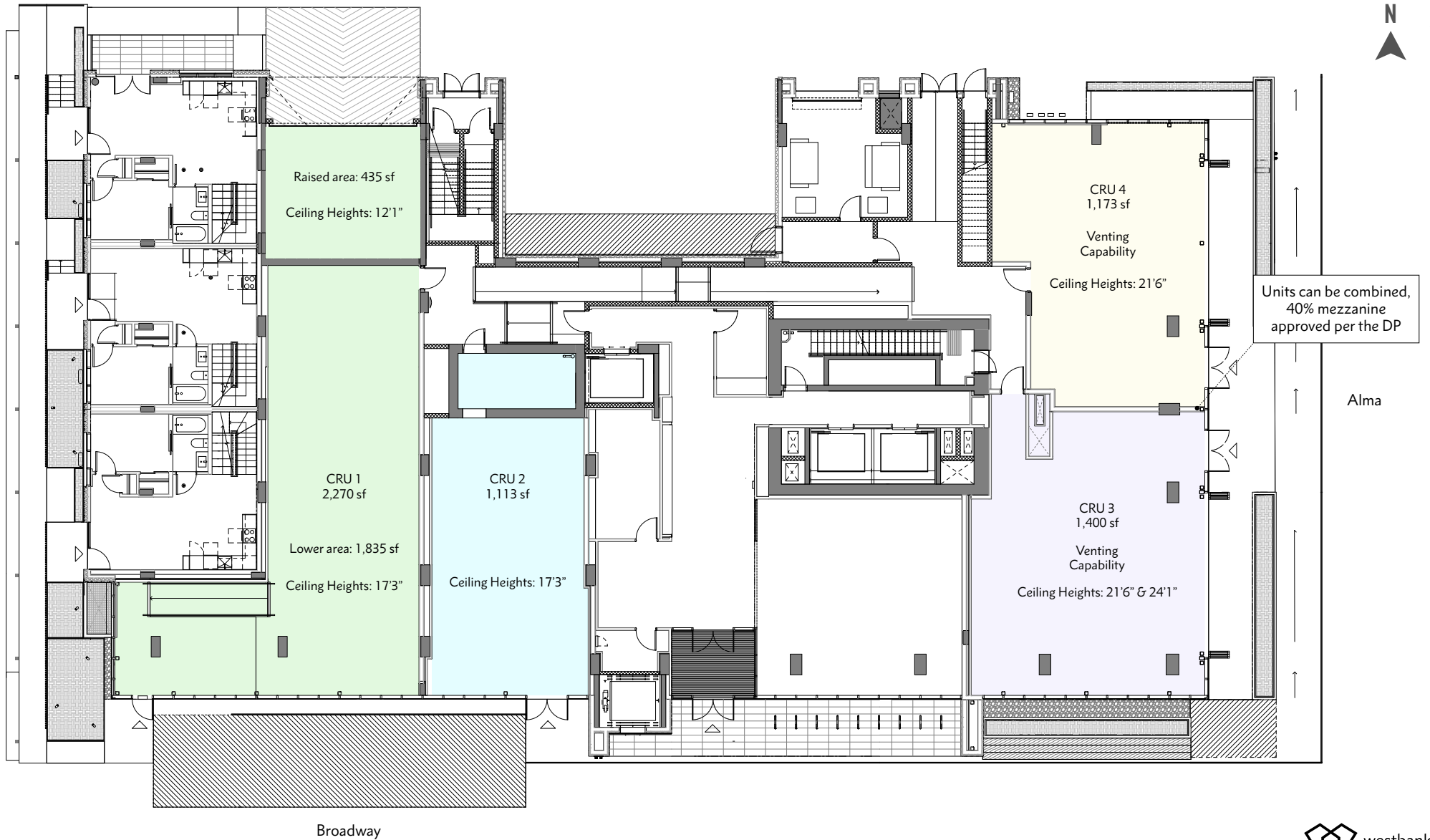
- 11 Jo's Italian Deli
- 12 Breka
- 13 Pure Bread
- 14 Cafe Lokal

NEIGHBOURHOOD ANCHORS

- 15 Jericho Village Shopping Centre - No Frills, BC Liquor Store
- 16 BC Liquor Store (Dunbar & W 16th)
- 17 UBC - 100,000 Students + Staff
- 18 Safeway (W Broadway & Macdonald)



Site Plan



Photos

