



1316 KINGSWAY VANCOUVER

RETAIL LEASING BROCHURE

SHELDON SCOTT
Personal Real Estate Corporation
604.416.5582
sheldon@sitings.ca

KAYLA MORROW
Senior Associate
604.416.5584
kayla@sitings.ca



SITINGS REALTY LTD.
SITINGS.CA / 604.684.6767
1595 – 650 West Georgia Street, Vancouver, BC V6B 4N8

PROJECT SUMMARY

The Property is situated in the heart of the Kensington-Cedar Cottage neighborhood, which is a vibrant and diverse area in Vancouver. Kingsway is a significant east-west arterial road that runs diagonally across Vancouver, connecting the eastern and western parts of the city. The location is well-connected to public transportation, with bus stops along Kingsway, providing easy access to other parts of Vancouver.

- ✦ Centrally located within a densely populated area of Vancouver
- ✦ Excellent exposure on Kingsway
- ✦ Area provides a great mix of local and national tenants
- ✦ Prominent signage opportunity



This document/email has been prepared by Sitings Realty Ltd. for advertising and general information only. Although information contained herein is from sources we believe reliable, Sitings Realty Ltd. makes no guarantees, representations or warranties of any kind, expressed or implied, regarding the information including, but not limited to, warranties of content, accuracy and reliability. This document/email is subject to errors and omissions and any interested party should undertake their own inquiries as to the accuracy of the information. Sitings Realty Ltd. excludes unequivocally all inferred or implied terms, conditions and warranties arising out of this document and excludes all liability for loss and damages arising there from. All areas, measurements and dimension herein are approximate, interested parties/tenant are to verify measurements if important to them. This document/email is not an inducement representation.

DETAILS

✦ Size:

✦ Main Floor: 2,927 SF (approx.)

Optional Storage: There is approximately 3,000 SF in a basement below

✦ Base Rent: \$30.00 PSF

✦ Additional Rent: \$20.50 PSF

✦ Zoning: C-2 – Commercial permitting: retail, general office, business schools, and beauty/wellness.

✦ Ceiling Height: Up to 9'10"

✦ Parking: Metered Street Parking

✦ Available: Immediately

AREA TENANTS



DOLLAR TREE 



ANYTIME FITNESS



HAKIM
OPTICAL

DEMOGRAPHICS

DRIVE TIME	5 MIN	7 MIN	12 MIN
2023 Population	99,470	204,232	609,274
2028 Populations Projection	105,498	217,682	661,573
2023 Daytime Population	76,252	178,791	708,117
2023 Average HH Income	\$125,141	\$124,541	\$121,116

CONTACT

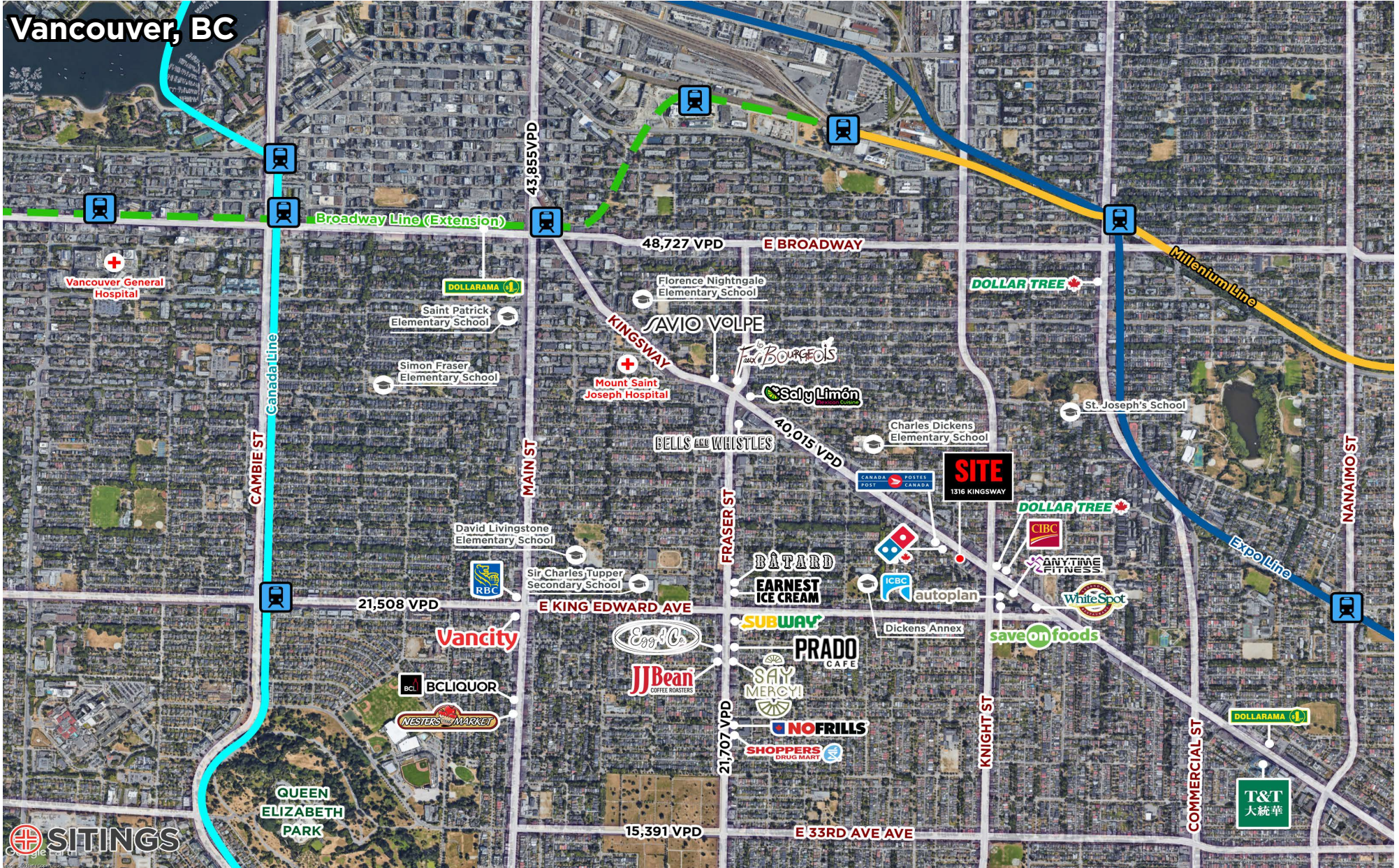
SHELDON SCOTT
Personal Real Estate Corporation

604.416.5582
sheldon@sitings.ca

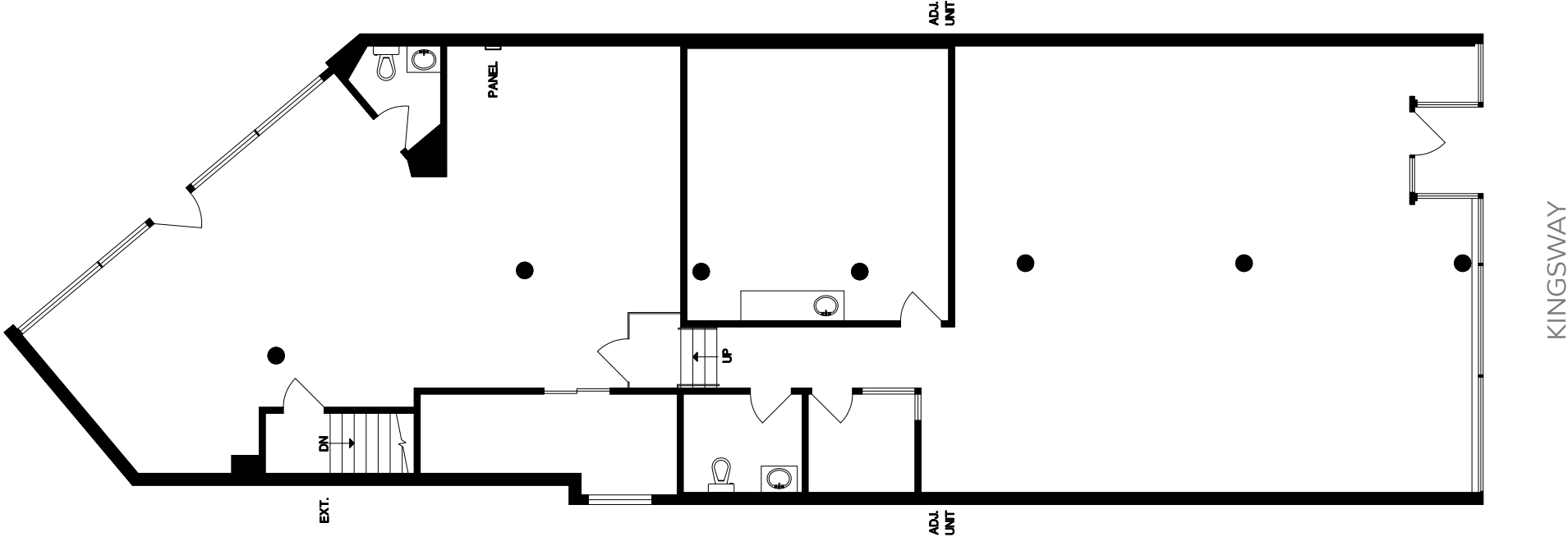
KAYLA MORROW
Senior Associate

604.416.5584
kayla@sitings.ca

AERIAL



FLOOR PLAN



This document/email has been prepared by Sitings Realty Ltd. for advertising and general information only. Although information contained herein is from sources we believe reliable, Sitings Realty Ltd. makes no guarantees, representations or warranties of any kind, expressed or implied, regarding the information including, but not limited to, warranties of content, accuracy and reliability. This document/email is subject to errors and omissions and any interested party should undertake their own inquiries as to the accuracy of the information. Sitings Realty Ltd. excludes unequivocally all inferred or implied terms, conditions and warranties arising out of this document and excludes all liability for loss and damages arising there from. All areas, measurements and dimension herein are approximate, interested parties/tenant are to verify measurements if important to them. This document/email is not an inducement representation.

PHOTOS

